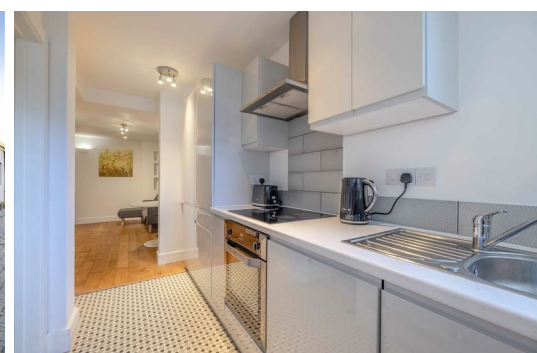




HARDINGS




Dedworth Road
£239,000



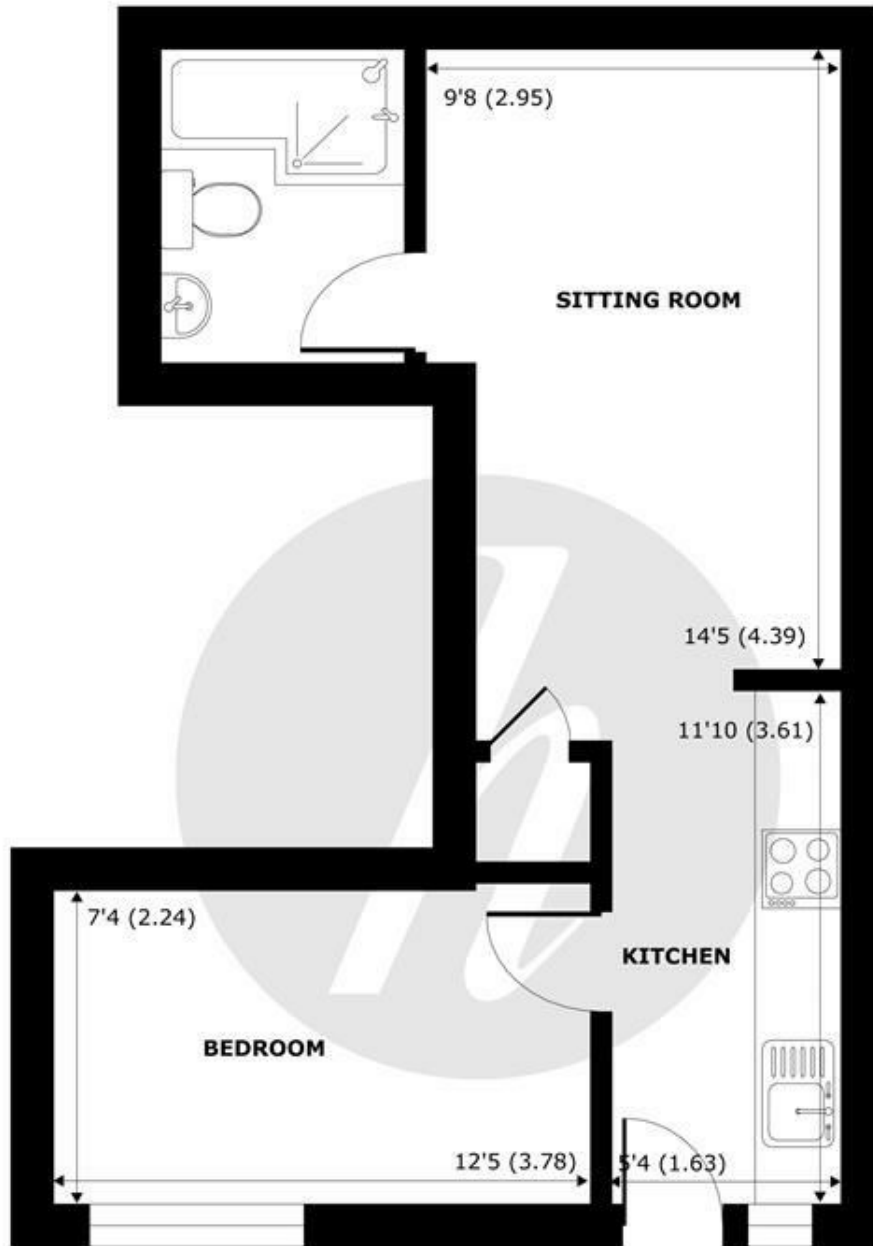
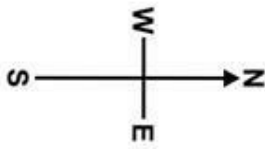


A recently developed an ideal first time purchase! This contemporary one bedroom ground floor maisonette is situated within a mile from Windsor Town Center and close vicinity of plentiful local amenities. No onward chain.

Energy Efficiency Rating		
	Current	Potential
<i>Very energy efficient - lower running costs</i>		
(92 plus) A		
(81-91) B		
(69-80) C		
(55-68) D	68	68
(39-54) E		
(21-38) F		
(1-20) G		
<i>Not energy efficient - higher running costs</i>		
England & Wales	EU Directive 2002/91/EC 	

Features

- Ground Floor Maisonette Apartment
- One Bedroom
- Contemporary Enterier
- Open Plan Kitchen/ Living Room
- No Chain
- Recently Developed
- Close to Local Amenities
- Spacious Bathroom
- Approx. Mile to Town Centre
- Leasehold



FIRST FLOOR
abt 355 SQFT (32.9 SQMT)

Dedworth Road, Windsor, SL4

Approximate Internal Area = 355 sq ft / 32.9 sq m

For identification only - Not to scale



Floor plan produced in accordance with RICS Property Measurement 2nd Edition, Incorporating International Property Measurement Standards (IPMS2 Residential). © nichecom 2026. Produced for Hardings. REF: 1469135





11 High Street, Windsor, Berkshire, SL4 1LD,
T: 01753 833 118 | E: info@hardings.co.uk
www.hardings.co.uk

