



Connells

Regent House Lombard Street
Bristol



Property Description

A beautifully reimagined period conversion set within an elegant red brick courtyard development in the heart of Bristol's vibrant BS3 district. This exceptional apartment blends refined heritage detailing with contemporary design to create a home of rare character and comfort. Thoughtfully updated throughout, it showcases a striking interplay of modern finishes and original architectural craftsmanship, from the rich timber panelling and ornate fireplaces to the sleek integrated kitchen and luxurious shower room.

The generous open plan living space forms the centrepiece of the home, offering an impressive sense of scale and atmosphere. High ceilings, warm natural light and beautifully restored woodwork combine to create a setting equally suited to quiet evenings or sophisticated entertaining. The bedroom continues the theme of calm refinement, with soft tones, mirrored storage and dual rear aspect double glazed windows framing leafy views.

Residents also enjoy access to the beautifully maintained communal courtyard, a peaceful green sanctuary with seating, landscaped lawns and mature planting. With independent cafés, harbourside walks and the cultural energy of South Bristol all within easy reach, this is a home that delivers both style and lifestyle in equal measure.

Kitchen And Living Room

20' 8" x 13' 3" (6.30m x 4.04m)
A striking open plan space where contemporary design meets historic craftsmanship. The living area is framed by beautifully detailed timber panelling and an ornate feature fireplace, creating a warm and atmospheric backdrop for both everyday living and entertaining. To the rear of the room, double glazed windows draw in soft natural

light and offer a peaceful outlook over greenery. Two radiators are mounted beneath the double glazed windows.

The kitchen area is finished to a high modern standard, with sleek cabinetry, integrated appliances and a light worktop that contrasts elegantly with the darker heritage tones. The open layout allows the kitchen to blend seamlessly with the living space, maintaining a sense of cohesion and sophistication throughout.

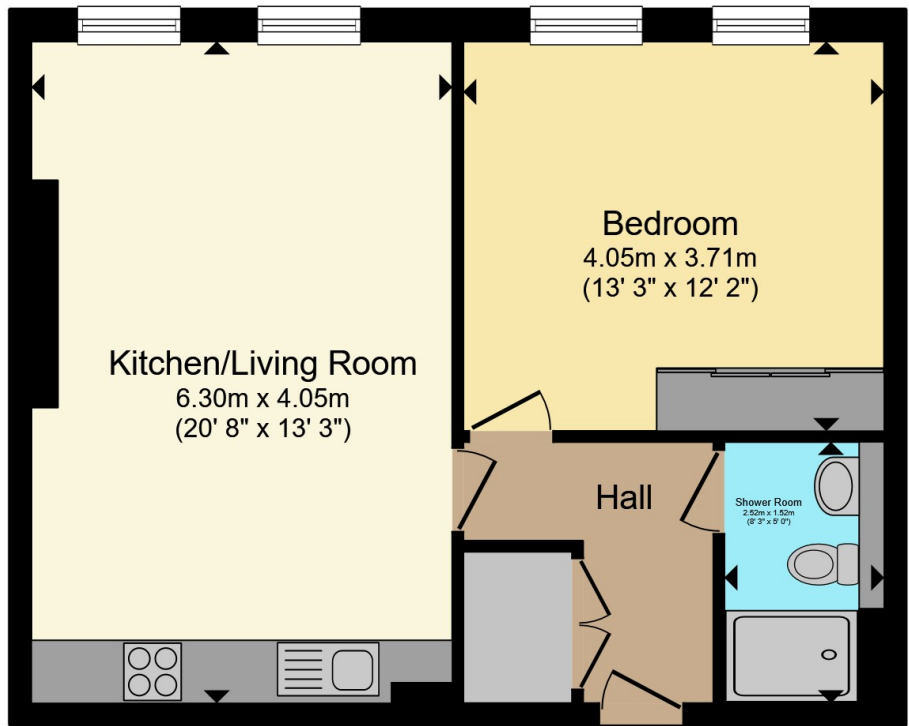
Bedroom

13' 3" x 12' 2" (4.04m x 3.71m)
A calm and inviting double bedroom positioned to the rear of the property, benefitting from two rear aspect double glazed windows that fill the room with natural light. Soft neutral décor and plush carpeting create a restful atmosphere, while the mirrored sliding wardrobes enhance both storage and the sense of space. A radiator is positioned along the internal wall near the doorway, incorporated discreetly so the clean and minimal aesthetic remains undisturbed.

Shower Room

7' 9" x 4' 11" (2.36m x 1.50m)
A beautifully finished contemporary shower room featuring large format tiling, a walk in glass enclosure and premium gold fixtures that elevate the space with a touch of luxury. The wall mounted vanity, concealed cistern WC and expansive mirror contribute to a sleek and streamlined feel. A heated towel radiator sits neatly to the side, adding both practicality and comfort.





Total floor area 51.0 m² (549 sq.ft.) approx

This floor plan is for illustrative purposes only. It is not drawn to scale. Any measurements, floor areas (including any total floor area), openings and orientation are approximate. No details are guaranteed, they cannot be relied upon for any purpose and they do not form part of any agreement. No liability is taken for any error, omission or misstatement. A party must rely upon its own inspection(s). Powered by www.propertybox.io



To view this property please contact Connells on

T 0117 966 4278

E southville@connells.co.uk

243 North Street Southville
BRISTOL BS3 1JN

EPC Rating: C Council Tax Band: C

Service Charge: Ask Agent

Ground Rent: Ask Agent

Tenure: Leasehold

view this property online connells.co.uk/Property/BMR312549

This is a Leasehold property. We are awaiting further details about the Term of the lease. For further information please contact the branch. Please note additional fees could be incurred for items such as Leasehold packs.



1. MONEY LAUNDERING REGULATIONS Intending purchasers will be asked to produce identification documentation at a later stage and we would ask for your co-operation in order that there will be no delay in agreeing the sale. 2. These particulars do not constitute part or all of an offer or contract. 3. The measurements indicated are supplied for guidance only and as such must be considered incorrect. Potential buyers are advised to recheck measurements before committing to any expense. 4. We have not tested any apparatus, equipment, fixtures, fittings or services and it is in the buyers interest to check the working condition of any appliances.

Connells Residential is registered in England and Wales under company number 1489613, Registered Office is Cumbria House, 16-20 Hockliffe Street, Leighton Buzzard, Bedfordshire, LU7 1GN. VAT Registration Number is 500 2481 05.

See all our properties at www.connells.co.uk | www.rightmove.co.uk | www.zoopla.co.uk

Property Ref: BMR312549 - 0002