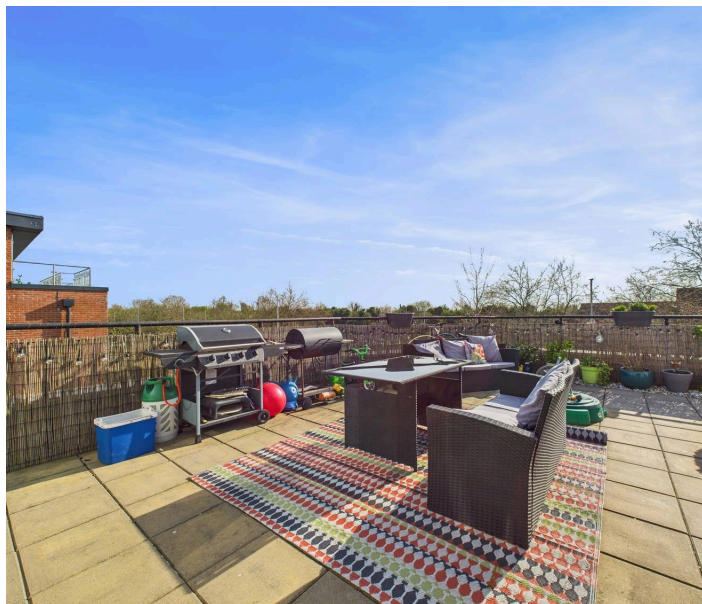




Elizabeth Court, Victoria Road, HA4 0JE
£272,000 | Leasehold



LAWRENCE RAND



Key Features & Description:

- MUST BE RESIDING IN THE HILLINGDON BOROUGH FOR THE LAST 10 YEARS DISCOUNT PURCHASE SCHEME
- One bedroom upper floor apartment
- First time buyers only
- Roof terrace
- Modern kitchen leading to lounge with direct access to terrace

MUST BE A FIRST TIME BUYER RESIDING IN THE HILLINGDON BOROUGH FOR THE LAST 10 YEARS DISCOUNT PURCHASE SCHEME

Stunning one double bedroom top floor apartment in a gated development with access via a security entry system, allocated parking and bike storage. An ideal starter home in an ultra-convenient location close to shops including The Old Dairy complex. The communal hallway has stairs and lifts to all floors. Once inside the apartment hallway doors lead to all rooms. The open plan kitchen/lounge/diner is decorated in soft neutral tones and has the benefit of a private terrace accessed from the living room. The contemporary kitchen has a range of wall and base units, ample work surfaces and integral appliances. The bedroom is a good size double with plenty of room for wardrobes and additional storage. The fresh modern bathroom has a white three piece suite.

Elizabeth Court is just a short walk from South Ruislip station (Central & Chiltern Line) as well as multiple shopping facilities including, Sainsburys and The Old Dairy development which also incorporates an 11 screen cinema, restaurants as well as shopping facilities and a 24hr Gym.

Presented with care by Lawrence Rand – helping you find the place you'll love to call home.



The criteria for applicants is as follows:

" To have lived in the Borough for at least 10 years (allowing approved breaks such as being in the armed forces or away at university)

" To be a first time buyer

" To have a credit balance in a personal bank account with a minimum of £3,000

" To be over 18 years of age

" To have a mortgage offer from an approved lender for the flats concerned (Please contact the office on 01895 632211 to arrange an appointment with our in house mortgage advisors if you do not already have this)

" To not be on housing benefit

" To not have an adverse credit history

Verified Material Information:

Local Authority: Hillingdon

Council tax band: C, EPC Rating: B

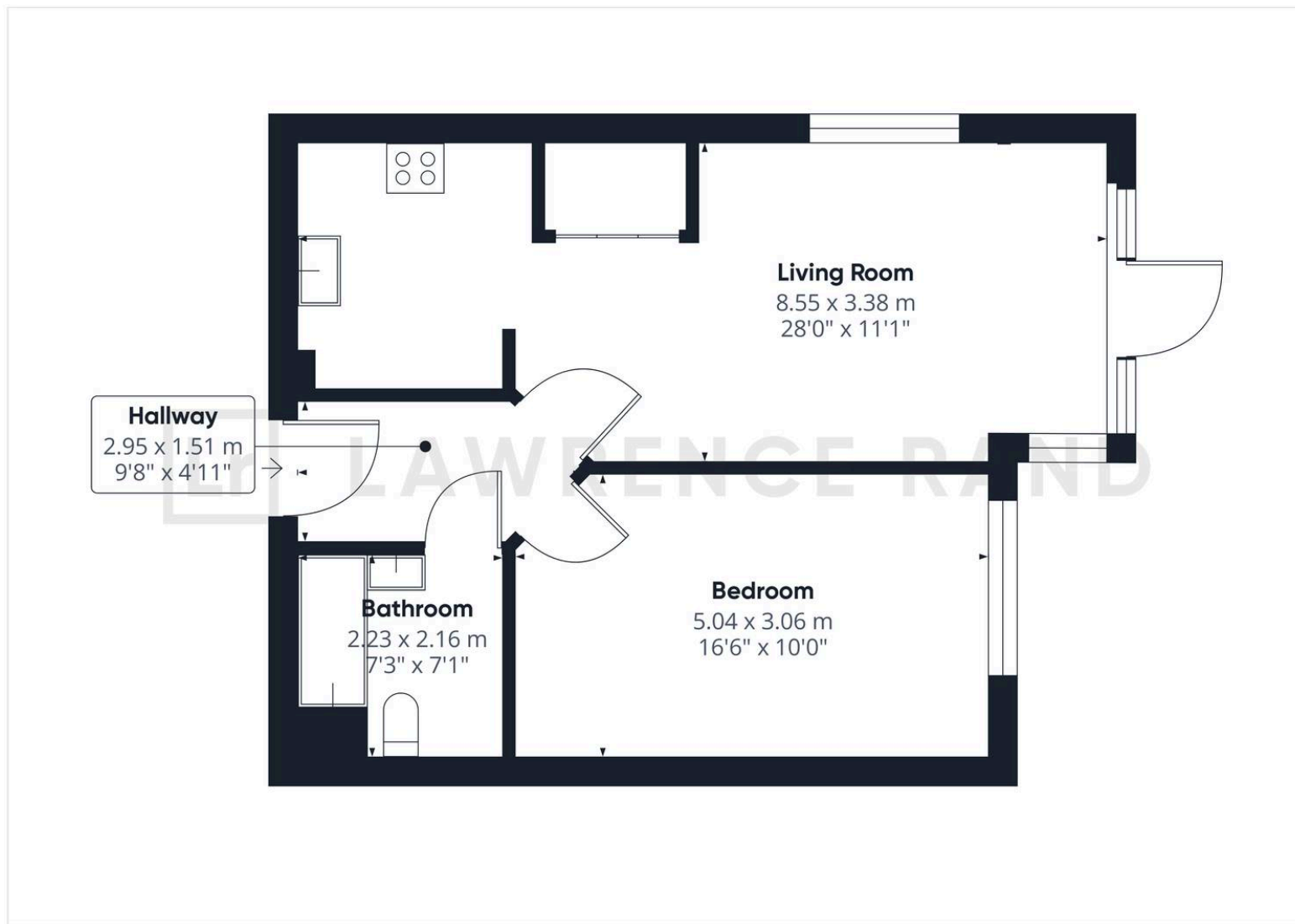
Lease: 113 year remaining, Service charge £1198 per annum

Electricity supply: Mains, Water supply: Mains water,
Sewerage: Mains

Heating: Gas central heating

Broadband: FTTP (Fibre to the Premises)

Mobile coverage: O2 - Excellent, Vodafone - Excellent, Three
- Excellent, EE Excellent



Lawrence Rand

51 Victoria Road, Ruislip - HA4 9BH

01895 632211

Sales@lawrence-rand.co.uk

www.lawrence-rand.co.uk

Lawrence Rand Limited has made every reasonable effort to ensure the accuracy of the information provided. However, we accept no responsibility for errors, omissions, or misstatements. All measurements, distances, and descriptions are approximate and for guidance only. Prospective purchasers or tenants must verify all details independently. Some images may include AI-generated virtual staging to illustrate the potential of the property and are for visual guidance only. No warranty is given or implied, and these particulars do not form part of any offer or contract. Lawrence Rand reserves the right to amend or withdraw any property without notice.