



Victoria Road, Southampton SO19 9EG

welcome to

Victoria Road, Southampton

* TWO BEDROOM TERRACED HOUSE * LOUNGE & DINING ROOM * FITTED KITCHEN & BATHROOM * COURTYARD REAR GARDEN * CLOSE TO LOCAL AMENITIES * GREAT LOCATION *

Front Garden

Pathway leading to entrance.

Lounge

13' 5" x 10' 5" (4.09m x 3.17m)

Laminate flooring, double glazed window to the front aspect, gas radiator, electric fireplace.

Dining Room

13' 5" x 10' 10" (4.09m x 3.30m)

Laminate flooring, double glazed patio door leading to garden, gas radiator, stairs to the first floor, access to;

Kitchen

13' 1" x 6' 4" (3.99m x 1.93m)

Wall and base cupboard units, range cooker, gas hob, overhead extractor, plumbing for white goods, stainless steel sink and drainer, double glazed window to the side aspect.

Landing

Access to all rooms, laminate flooring.

Bedroom One

13' 5" x 10' 6" (4.09m x 3.20m)

Laminate flooring, gas radiator, double glazed window to the front aspect, built in storage.

Bedroom Two

10' 11" x 9' 10" (3.33m x 3.00m)

Laminate flooring, gas radiator, double glazed window to the rear aspect.

Bathroom

Bath with overhead shower, partially tiled walls, wash hand basin, low level w/c, double glazed window to the rear aspect.

Rear Garden

Enclosed courtyard with patio area, rear access and outside tap.





Situated in the heart of Woolston, this delightful two-bedroom terraced home offers a fantastic location with local amenities right on your doorstep. Perfect for families or first-time buyers, a viewing is highly recommended.

Inside, you'll find a spacious lounge and a separate dining room, with access from the dining room to the courtyard rear garden. The fitted kitchen offers ample storage and worktop space.

Upstairs, the property boasts two generously sized bedrooms and a large family bathroom, offering plenty of room for everyday living.

This is a wonderful family home in a sought-after area, don't miss out!



view this property online fox-and-sons.co.uk/Property/BIT112905



welcome to

Victoria Road, Southampton

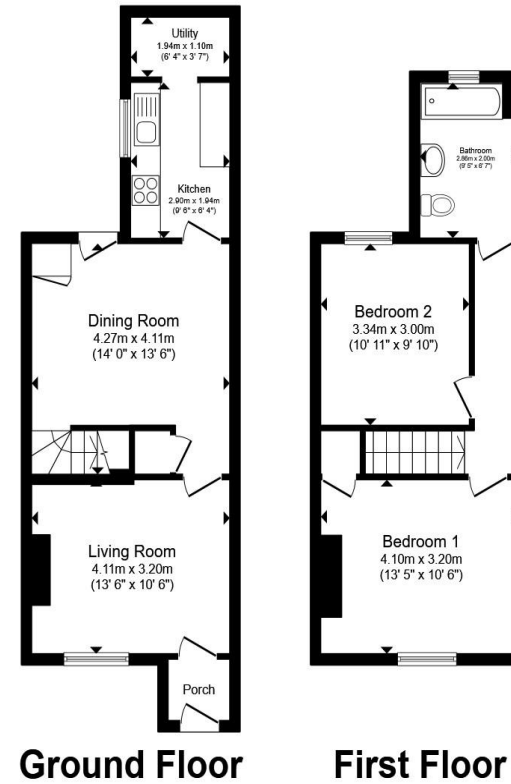
- Terraced House
- Two Double Bedrooms
- Lounge & Dining Room
- Courtyard Rear Garden
- Fitted Kitchen & Bathroom

Tenure: Freehold EPC Rating: C

Council Tax Band: B

offers over

£230,000



Total floor area 75.9 m² (817 sq.ft.) approx

This floor plan is for illustrative purposes only. It is not drawn to scale. Any measurements, floor areas (including any total floor area), openings and orientation are approximate. No details are guaranteed, they cannot be relied upon for any purpose and they do not form part of any agreement. No liability is taken for any error, omission or misstatement. A party must rely upon its own inspection(s). Powered by www.propertybox.io



view this property online fox-and-sons.co.uk/Property/BIT112905



Property Ref:
BIT112905 - 0008

1. MONEY LAUNDERING REGULATIONS Intending purchasers will be asked to produce identification documentation at a later stage and we would ask for your co-operation in order that there is no delay in agreeing the sale. 2. These particulars do not constitute part or all of an offer or contract. 3. The measurements indicated are supplied for guidance only and as such must be considered incorrect. Potential buyers are advised to recheck measurements before committing to any expense. 4. We have not tested any apparatus, equipment, fixtures or services and it is in the buyers interest to check the working condition of any appliances. 5. Where an EPC, or a Home Report (Scotland only) is held for this property, it is available for inspection at the branch by appointment. If you require a printed version of a Home Report, you will need to pay a reasonable production charge reflecting printing and other costs. 6. We are not able to offer an opinion either written or verbal on the content of these reports and this must be obtained from your legal representative. 7. Whilst we take care in preparing these reports, a buyer should ensure that his/her legal representative confirms as soon as possible all matters relating to title including the extent and boundaries of the property and other important matters before exchange of contracts.

Fox & Sons is a trading name of Sequence (UK) Limited which is registered in England and Wales under company number 4268443, Registered Office is Cumbria House, 16-20 Hockliffe Street, Leighton Buzzard, Bedfordshire, LU7 1GN. VAT Registration Number is 500 2481 05.



023 8044 6724



Bitterne@fox-and-sons.co.uk



390c Bitterne Road, Bitterne, SOUTHAMPTON,
Hampshire, SO18 5RS



fox-and-sons.co.uk