



## 32 Grosvenor Street

London, W1K 4QS

**£3,500 Per month**

A pied a terre in the heart of Mayfair, this apartment is a stone's throw away from Berkeley Square. This furnished one-bedroom residence also benefits from a round-the-clock concierge and lift access in addition to private outdoor space.

\* 24/7 Concierge

\* Lift access

\* Outdoor patio

\* Newly decorated

\* Fitted wardrobes

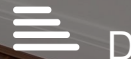
\* Looks to the front of the property

\* 500 sqft

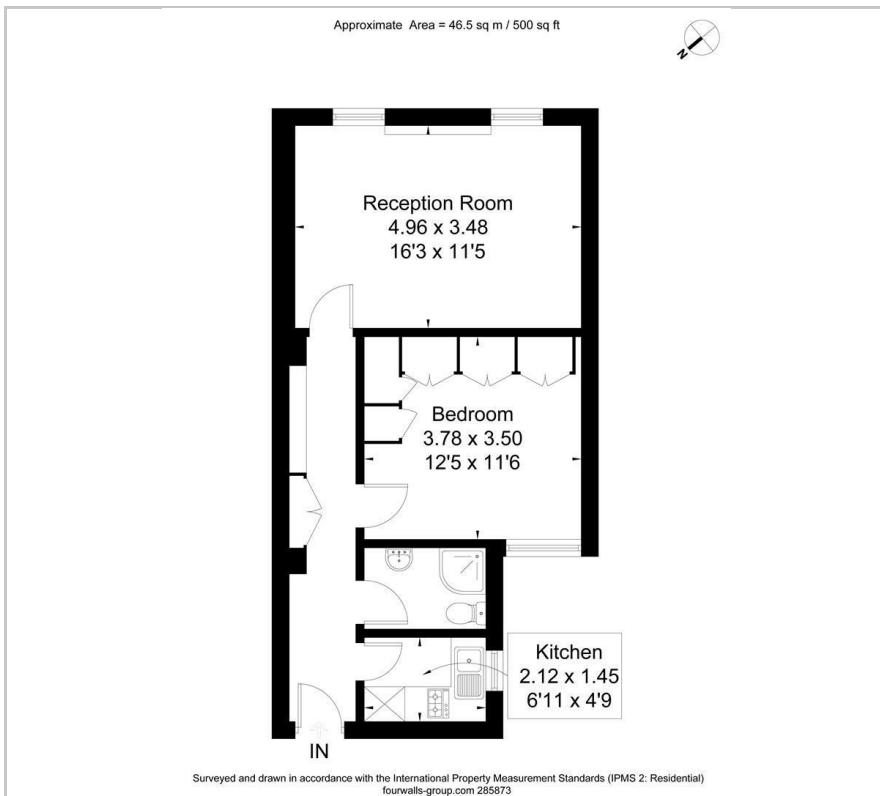
### Viewing

Please contact our Birdhouse Surrey Office on 02087737730 if you wish to arrange a viewing appointment for this property or require further information.

- In the heart of Mayfair
- Concierge 24/7
- Lift
- 0.1 miles from Bond Street
- Outdoor space



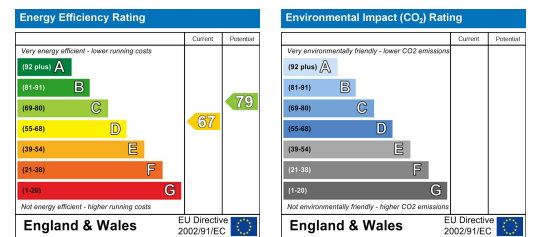
## Floor Plan



## Area Map



## Energy Efficiency Graph



These particulars, whilst believed to be accurate are set out as a general outline only for guidance and do not constitute any part of an offer or contract. Intending purchasers should not rely on them as statements of representation of fact, but must satisfy themselves by inspection or otherwise as to their accuracy. No person in this firm's employment has the authority to make or give any representation or warranty in respect of the property.

Email: [info@birdhousesurrey.co.uk](mailto:info@birdhousesurrey.co.uk)

Web: [birdhousesurrey.co.uk](http://birdhousesurrey.co.uk)

Monarch House, 7-9 Stafford Road, Wallington, Surrey, SM6 9AN