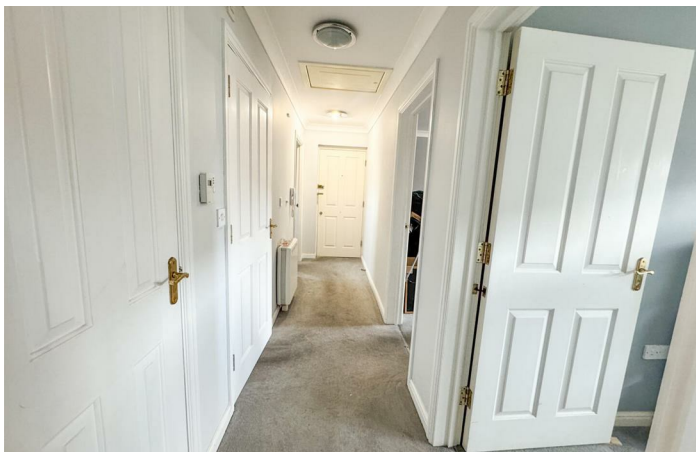




Collier Way, Southend-on-Sea Offers Over £170,000 Leasehold

- Top floor flat
- Spacious Lounge with balcony
 - Long Lease
- Close to Southend Seafront
- Two bedrooms
- Under-cover allocated parking
- Perfect for first time buyers or downsizers
 - EPC - C





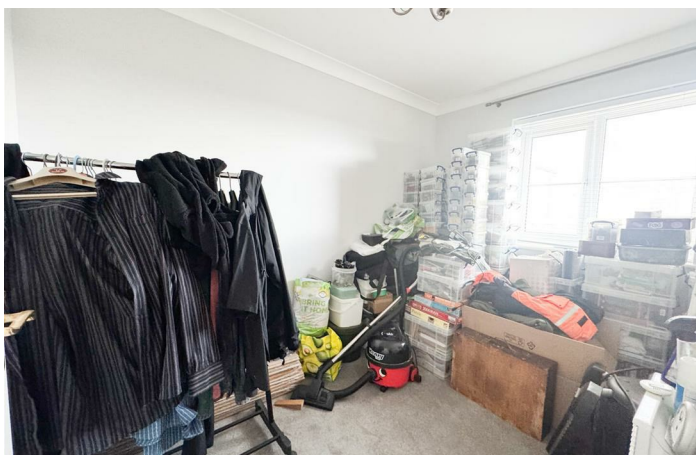
Hair & Son are pleased to present this two bedroom top floor apartment in Collier Way, located close to Southend Seafront.

The accommodation comprises of two well proportioned bedrooms, a spacious lounge that provides access to the private balcony, which is a great space for relaxation.

The fitted kitchen provides ample cupboard and counter space along with space for all appliances. The bathroom comprises of bathtub, wash hand basin and a low level w/c,

The apartment features a long lease of 132 years, under-cover allocated parking and private balcony.

This block is positioned in an coveted area in Southend-On-Sea within yards of Southend Seafront. It is also within easy reach to the lovely Southchurch Park, and Southend East train station which provides convenient access directly into London.



Hall

Lounge

15'0 x 11'8

Bedroom 1

11'0 x 10'3

Bedroom 2

10'3 x 9'9

Kitchen

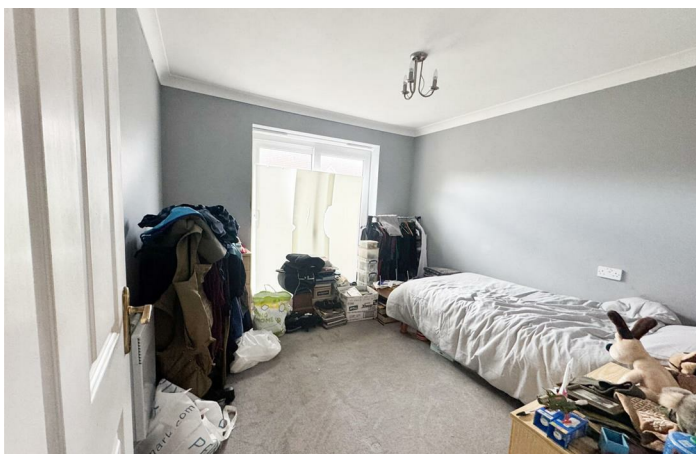
9'9 x 6'2

Bathroom

Balcony

Allocated parking

These particulars are accurate to the best of our knowledge but do not constitute an offer or contract. Photos are for representation only and do not imply the inclusion of fixtures and fittings. The floor plans are not to scale and only provide an indication of the layout. Further details have also been provided by our seller.





Top Floor

Approx. 51.4 sq. metres (552.9 sq. feet)
(excluding Balcony)



Total area: approx. 51.4 sq. metres (552.9 sq. feet)

Sales Office

190 London Road, Southend-On-Sea,
Essex, SS1 1PJ

Contact

01702 34 11 77

<https://hairandson.co.uk/>

Agents Note: Whilst every care has been taken to prepare these particulars, they are for guidance purposes only. All measurements are approximate and for general guidance purposes only and whilst every care has been taken to ensure accuracy, they should not be relied upon and potential buyers/tenants are advised to recheck the measurements.