

Colin Dean Residential

in partnership with Dexters



Eastman Road, HA1

£2,300 pcm

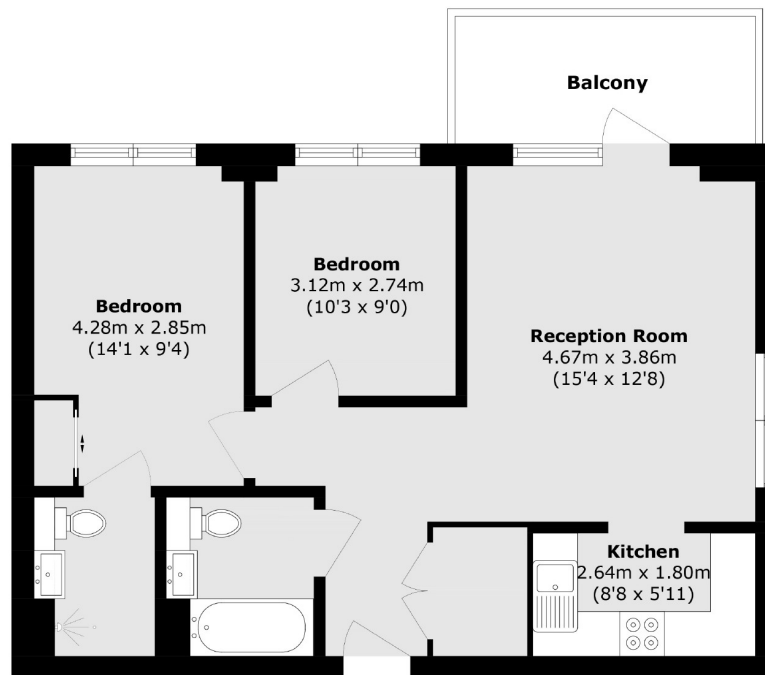
This modern two bedroom, two bathroom flat offers the perfect blend of modern design and everyday comfort. The property boasts two generously sized double bedrooms, including a master suite with a private en-suite bathroom for added comfort. The spacious, open-plan kitchen is equipped with sleek, integrated appliances and flows effortlessly into a bright, airy living area with large doors that open out onto its own private balcony. Perfect for professional sharers and families seeking convenience and contemporary living. Energy Rating: B.

This property offers easy access to shopping, dining, entertainment, and outstanding rated schools. Conveniently located 1 Mile away from Harrow On The Hill (Metropolitan Line), and two popular Shopping Centres (St Anne's & St. George's). Harrow and Wealdstone station is 0.7 Miles away, giving you access to Overground and Bakerloo lines.

- Two Double Bedrooms • Two Bathrooms • Ensuite Shower Room •
- Semi Open Plan Kitchen • Unfurnished • Private Balcony •

Colin Dean Residential

in partnership with Dexters



Total area (approx.): 63.5 sq. m (683.5 sq. ft)

Balcony area (approx.): 6.8 sq. m (73.1 sq. ft)

Colin Dean Residential
350 Pinner Road,
Harrow, HA1 4LB
020 8515 7929
daniel.murray@colindean.com

Energy Rating: B We aim to make our particulars both accurate and reliable. However they are not guaranteed; nor do they form part of an offer or contract. If you require clarification on any points then please contact us, especially if you're travelling some distance to view. Please note that appliances and heating systems have not been tested and therefore no warranties can be given as to their good working order.