

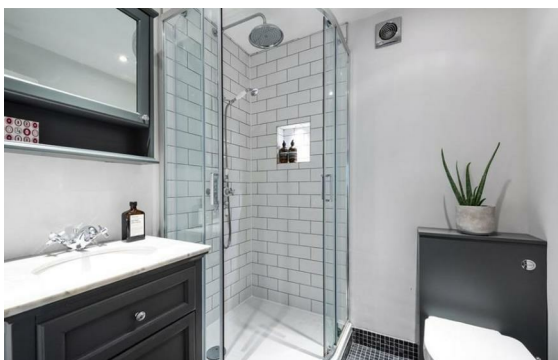
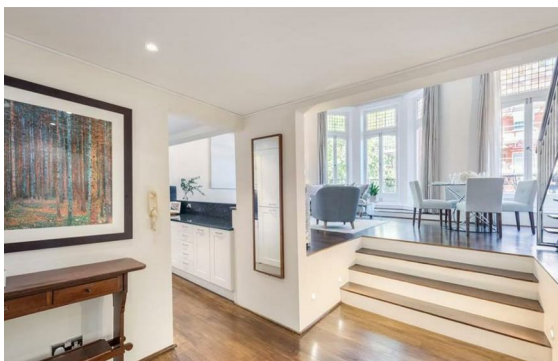


Exchange Court, Covent Garden, London, WC2R

Rent £1,260 PCM

2 Bed | 2 Bath | 1 Reception

Please call us on 020 7724 2233 or email us info@newingtonstates.com to book a viewing.



60 Upper Montagu Street

London

W1H 1SN

020 7724 2233

info@newingtonestates.com

A beautifully presented two-bedroom duplex apartment situated within a prestigious residential development, just moments from Covent Garden. The property comprises two bright double bedrooms, three stylish bathrooms (including a guest WC), and a spacious reception room with a fully fitted kitchen. Further benefits include video entry system, comfort cooling, underfloor heating, integrated touch-panel lighting, 24-hour concierge, and an allocated parking space.

Perfectly positioned in the heart of London's West End, the apartment enjoys excellent transport links with Covent Garden, Holborn, and Temple Underground stations all within easy reach.

EPC Rating: B

Energy Efficiency Rating: B

Agents Note: Whilst every care has been taken to prepare these particulars, they are for guidance purposes only. All measurements are approximate and are for general guidance purposes only and whilst every care has been taken to ensure their accuracy, they should not be relied upon and potential buyers/tenants are advised to recheck the measurements.

<http://www.newingtonestates.com>