



Avondale Avenue, N12

£1,000,000

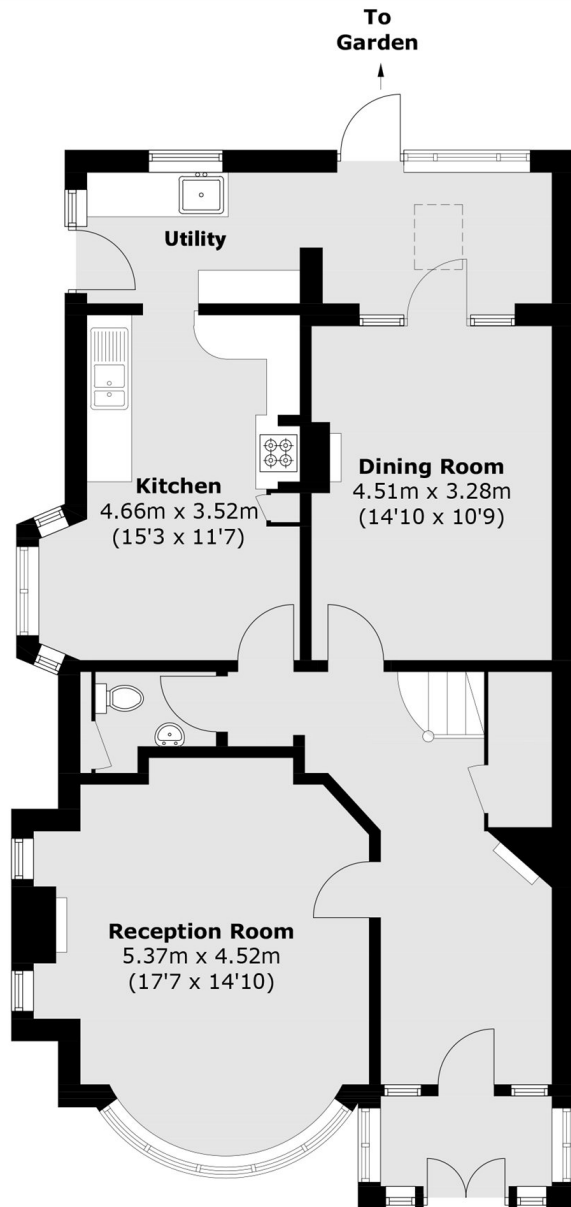
A characterful semi-detached family home in the heart of North Finchley. The property has Four generously sized bedrooms a two large reception rooms, separate kitchen, period features and a private garden.

Avondale Avenue Is ideally situated within close proximity of Woodside Park Station, providing frequent travel links across the capital, as well as local highly regarded schooling, including St Michaels Catholic, which boasts an outstanding Ofsted report.

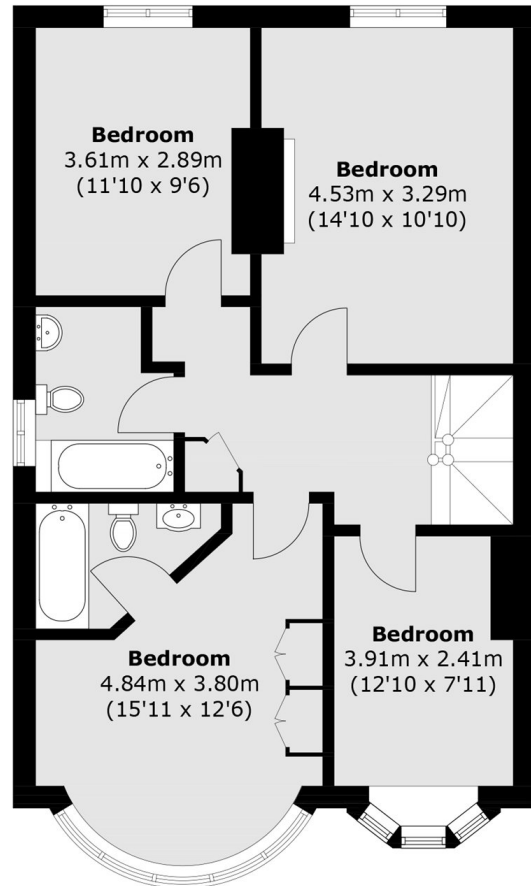
Features

- Four Double Bedrooms
- Private Garden
- Period Features
- Two reception rooms
- Chain Free
- Excellent Transport Links

Avondale Avenue, London, N12



Ground Floor



First Floor

Total area (approx.): 154.1 sq. m (1,658.7 sq. ft)