



Aberfeldy Square, E14

£553 Per week

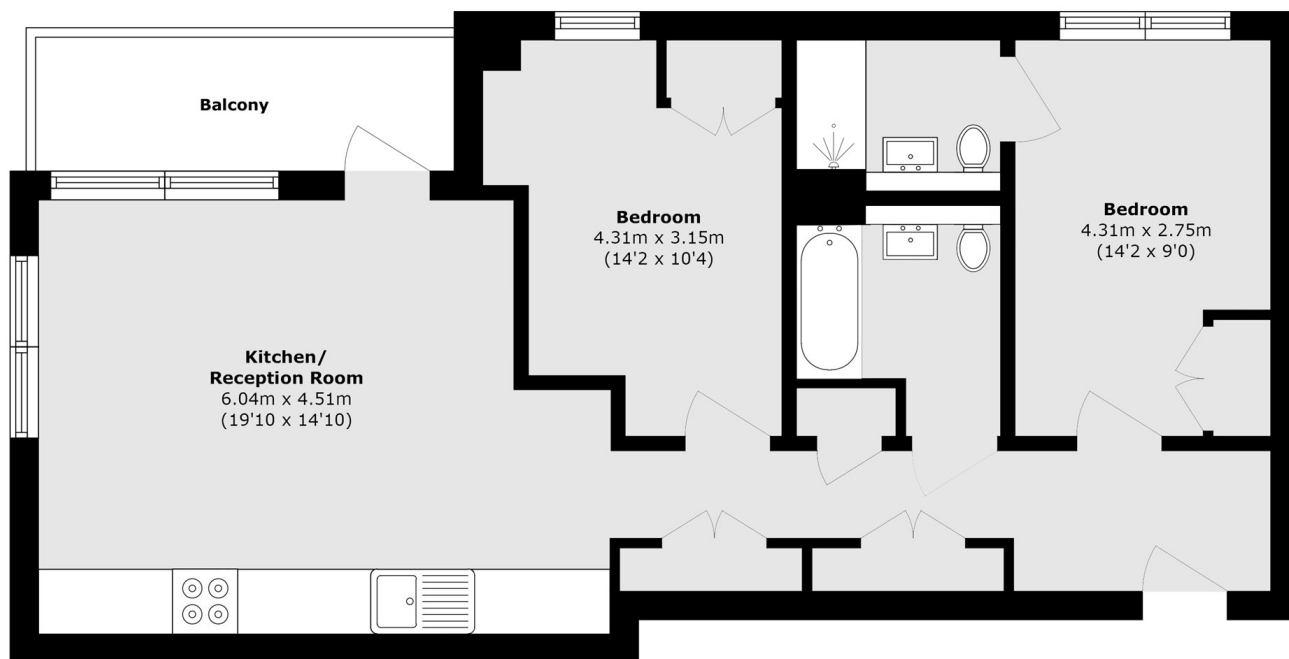
A two-bedroom, two-bathroom apartment on a high floor, comprising an open-plan reception, wood flooring, built-in storage, and a private balcony.

Aberfeldy Village is located just outside Canary Wharf and Canning Town. The development will include an energy centre, retail units, community and health facilities, and green spaces.

Features

- Two Bedrooms
- Two Bathrooms
- Open Plan
- High Floor Position
- Private Balcony
- Resident Facilities

Aberfeldy Square, London, E14



Total area (approx.): 70.0 sq. m (753.4 sq. ft)
Balcony area (approx.): 5.98 sq. m (64.3 sq. ft)