



# Dean Street

## Soho, W1D

Asking Price £2,400,000

Spanning across third and fourth floors, offering three spacious bedrooms, two modern bathrooms, and a beautifully designed open-plan kitchen and living area. A private terrace extends the living space, perfect for entertaining.

**CHESTERTONS**





# Dean Street

## Soho, W1D

- 3rd & 4th Floors
- 3 Bedrooms
- 2 Bathrooms
- Unbeatable Soho Location
- Ideally located close by Tottenham Court Road (Central, Northern & Elizabeth Lines)





This stunning duplex apartment spans 1,294 sq ft across the third and fourth floors, offering three spacious bedrooms, two modern bathrooms, and a beautifully designed open-plan kitchen and living area. A private terrace extends the living space, perfect for entertaining or relaxing outdoors.

Situated in the vibrant heart of Soho, residents will enjoy an unparalleled lifestyle with an endless array of options right on their doorstep. From world-class theatres, stylish bars, and international restaurants to independent fashion boutiques and traditional British pubs, Soho's unique energy and cultural diversity make it one of London's most exciting places to live.

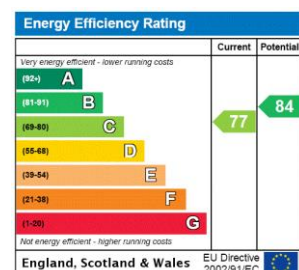
**Tenure:** Leasehold 969 years 4 months

**Service Charge:** £4840

**Ground Rent:** £0

**Local Authority:** City of Westminster

**Council Tax Band:** H



### Chestertons Covent Garden Sales

196 Shaftesbury Avenue

London

WC2H 8JF

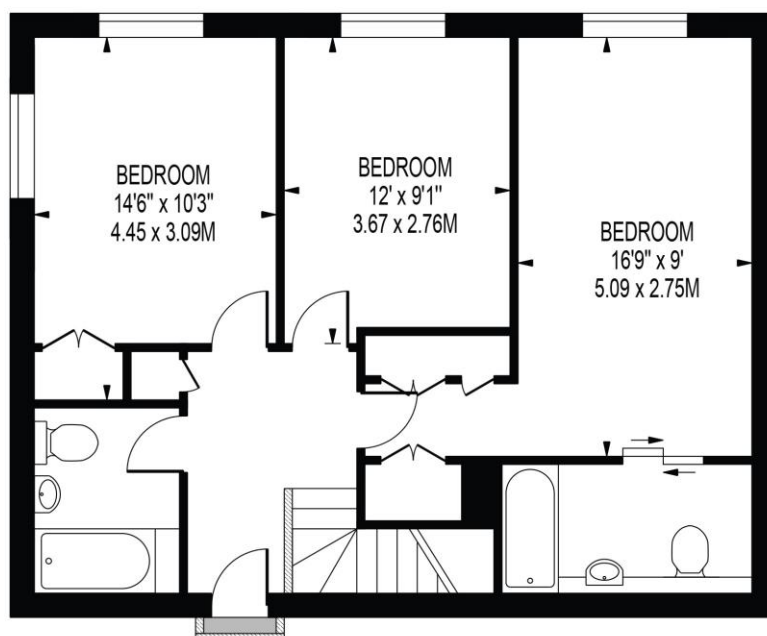
coventgarden@chestertons.co.uk

020 3040 8300

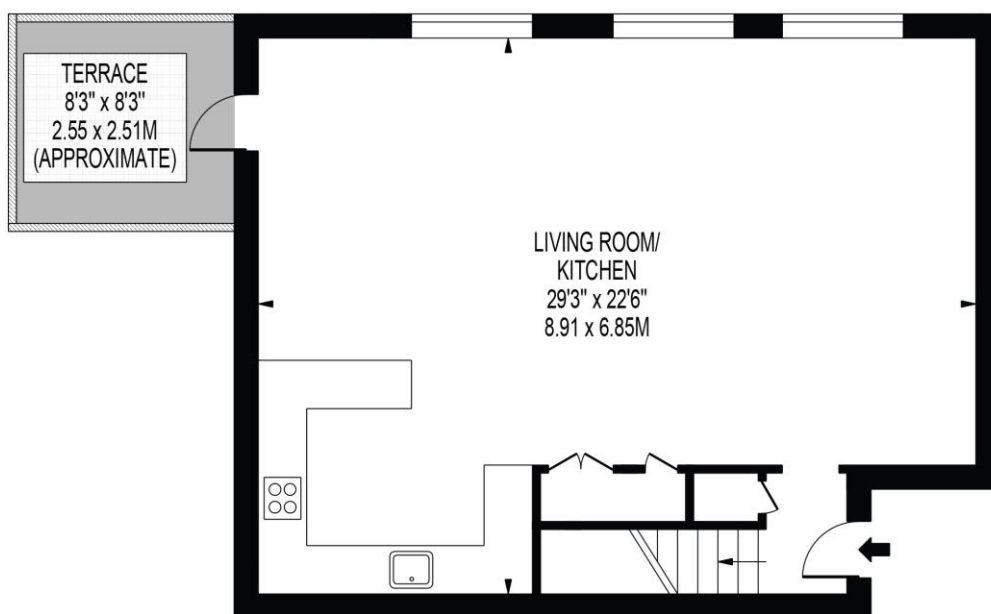
chestertons.co.uk

# DEAN STREET

APPROXIMATE GROSS INTERNAL FLOOR AREA: 1294 SQ FT - 120.26 SQ M



FOURTH FLOOR



THIRD FLOOR

FOR ILLUSTRATION PURPOSES ONLY

THIS FLOOR PLAN SHOULD BE USED AS A GENERAL OUTLINE FOR GUIDANCE ONLY AND DOES NOT CONSTITUTE IN WHOLE OR IN PART AN OFFER OR CONTRACT. ANY INTENDING PURCHASER OR LESSEE SHOULD SATISFY THEMSELVES BY INSPECTION, SEARCHES, ENQUIRIES AND FULL SURVEY AS TO THE CORRECTNESS OF EACH STATEMENT. ANY AREAS, MEASUREMENTS OR DISTANCES QUOTED ARE APPROXIMATE AND SHOULD NOT BE USED TO VALUE A PROPERTY OR BE THE BASIS OF ANY SALE OR LET.

