



6 Gunnell Road, Corby, Northamptonshire, NN18 9FJ



£280,000

This exceptionally well-presented and generously proportioned four-bedroom townhouse occupies a highly desirable position within a popular residential setting, and has been thoughtfully enhanced and upgraded by the current owners to create a home of both style and substance.

The ground floor reveals a superb open-plan kitchen and dining space, beautifully designed to serve as the heart of the home. Flooded with natural light, this impressive area is further complemented by elegant bi-fold doors that open seamlessly onto a meticulously landscaped rear garden, offering an idyllic setting for both relaxed family living and refined entertaining. In addition, the ground floor benefits from a skilfully converted garage, now providing a versatile reception room with French doors leading to the garden, alongside a guest WC and a well-appointed study or family room, ideal for modern lifestyles.

Ascending to the first floor, one finds a spacious and inviting lounge, perfectly suited for unwinding, as well as a substantial principal bedroom complete with a stylish en suite shower room. The uppermost floor accommodates three further well-proportioned bedrooms, each offering flexibility for family, guests, or home working, all served by a contemporary family bathroom finished to a high standard.

This impressive home combines elegant presentation with practical living space, making it ideally suited to a wide range of buyers. Early viewing is strongly recommended to fully appreciate the quality, space, and lifestyle on offer.

- Four Bedroom Family Home
- En Suite To Master Bedroom
- Landscaped Rear Garden
- Close to all amenities
- Bifold doors to Garden.
- Spacious And Substantial Accommodation
- Converted Garage
- Immaculately presented.
- Close to schooling
- Off road parking.

Entrance Hall

Entry via a double glazed door to the front aspect, features include wall mounted radiator, under stairs cupboard, staircase to first floor landing, tiled floor, doors to cloakroom, study and kitchen.

Cloakroom

A two piece suite comprising a wash hand basin and WC, features include wall mounted radiator and tiled floor.

Study

12'7" x 8'0" (3.86m x 2.44m)

This room features double glazed window to the front aspect, wall mounted radiator, tiled floor and telephone point.

Kitchen

14'2" x 12'5" (4.34m x 3.81m)

A fitted kitchen comprising a range of wall and base units, sink and drainer unit, work surface, complimentary







tiling, electric oven and hob with extractor hood over, space for washing machine, tumble dryer, fridge/freezer, spot lights, tiled floor and double glazed bi-fold doors into the garden.

First floor landing

Staircase from the entrance hall, features include wall mounted radiator, doors to lounge and bedroom one and staircase to second floor landing.

Lounge

14'4" x 12'7" (4.39m x 3.86m)

This room features two double glazed windows to the front aspect, wall mounted radiator, telephone and TV points.





Bedroom one

12'4" x 11'8" (3.78m x 3.58m)

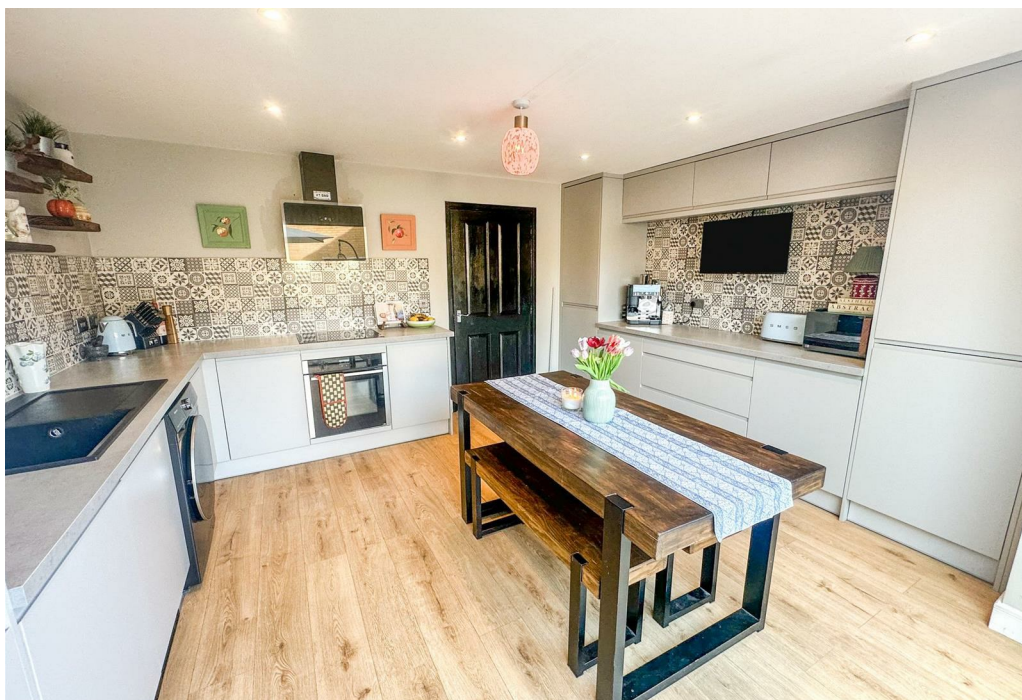
This room features two double glazed windows to the rear aspect, two wall mounted radiator, built in wardrobes and door to the en suite.

En suite

A three piece suite comprising a shower cubicle, vanity wash hand basin and WC, features include heated towel rail, extractor fan, full complimentary tiling and tiled floor.

Second floor landing

Staircase from the first floor landing, features include wall mounted radiator, loft access, doors to bedrooms two, three, four and bathroom.





Bedroom two

14'4" x 12'9" (4.37m x 3.89m)

This room features two double glazed windows to the rear aspect, wall mounted radiator and TV point.

Bedroom three

12'7" x 6'7" (3.84m x 2.03m)

This room features double glazed window to the front aspect, wall mounted radiator, cupboard and TV point.

Bedroom four

10'0" x 7'3" (3.05m x 2.21m)

This room features double glazed window to the front aspect and wall mounted radiator.





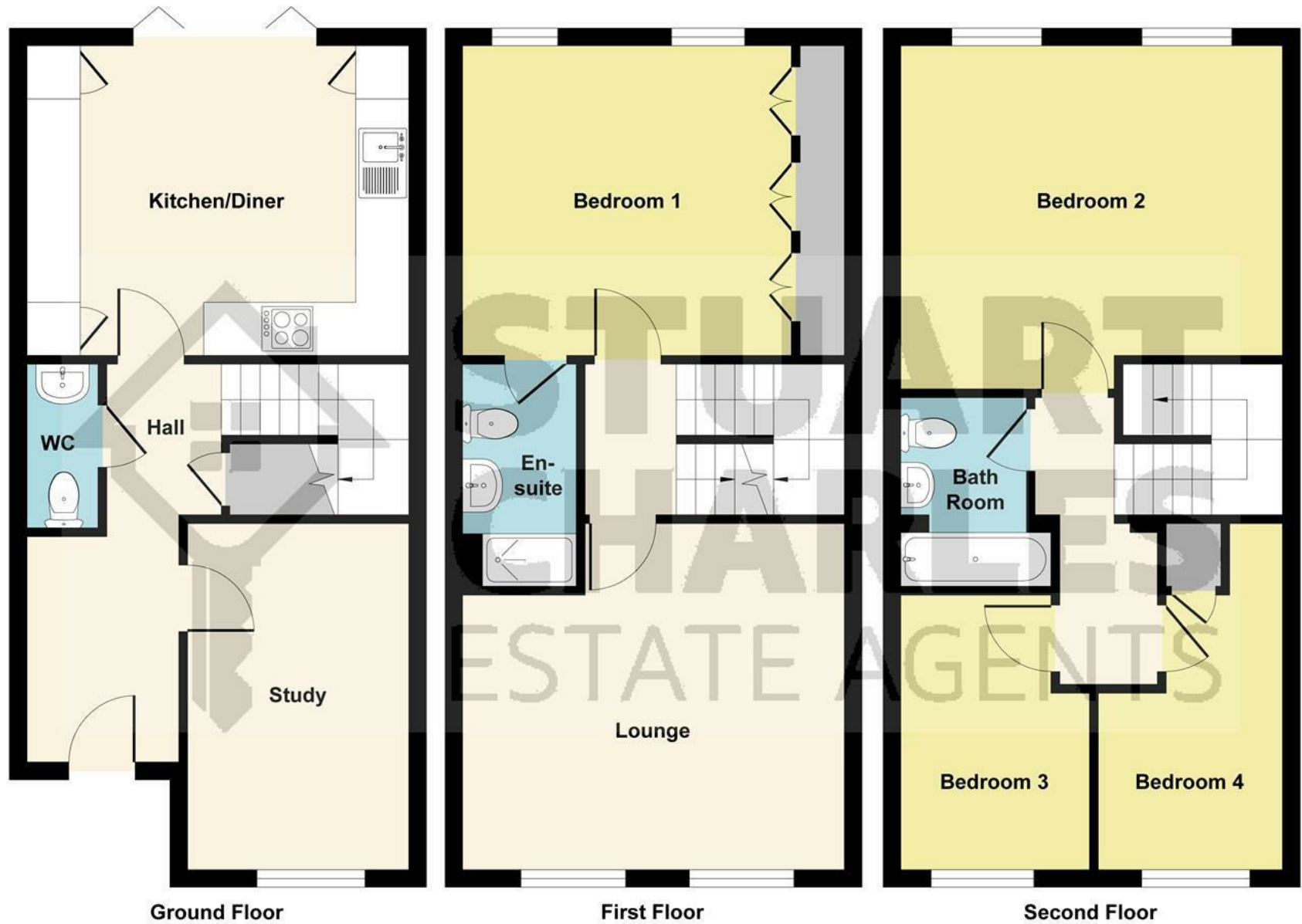


Illustration for identification purposes only, measurements are approximate, not to scale.

Produced by Elements Property



Bathroom

A three piece suite comprising a bath with shower over, vanity wash hand basin and WC, features include extractor fan, radiator, complimentary tiling.

Sun room

12'5" x 8'2" (3.81m x 2.51m)
Features include power and lighting, built in fridge, spot lights, tiled floor and storage space.

Outside

Front

A gravel frontage with railing surround and steps to the front door.

Rear Garden

An enclosed landscaped garden with raised beds, artificial lawn and porcelain tiled patio areas and door into the converted garage.

Energy Efficiency Rating		Current	Potential
Very energy efficient - lower running costs			
(92 plus) A			
(81-91) B			
(69-80) C			
(55-68) D			
(39-54) E			
(21-38) F			
(1-20) G			
Not energy efficient - higher running costs			
England & Wales		EU Directive 2002/91/EC	