



Northumberland
Properties

Harthope Station Road, Embleton
£350,000





Harthope Station Road

Embleton, Alnwick

Council Tax band: C

Tenure: Freehold

- Charming three-bedroom semi-detached period home positioned within the highly desirable coastal village of Embleton
- Well positioned just moments from the Northumberland coastline, offering easy access to beaches, coastal walks and open shoreline.
- Versatile ground floor layout with multiple reception rooms, offering flexibility for modern family living, home working or additional leisure space
- Practical ground floor WC and separate utility room, enhancing everyday functionality and convenience.
- Generous and beautifully maintained mature front garden
- Private rear garden with paved seating area, covered storage space and access to a garage
- Single garage with additional driveway parking for multiple cars
- Ideally suited to a wide range of buyers, including those seeking a full-time residence, coastal retreat, second home or lifestyle-led move.











Approximate total area⁽¹⁾

946 ft²

88 m²

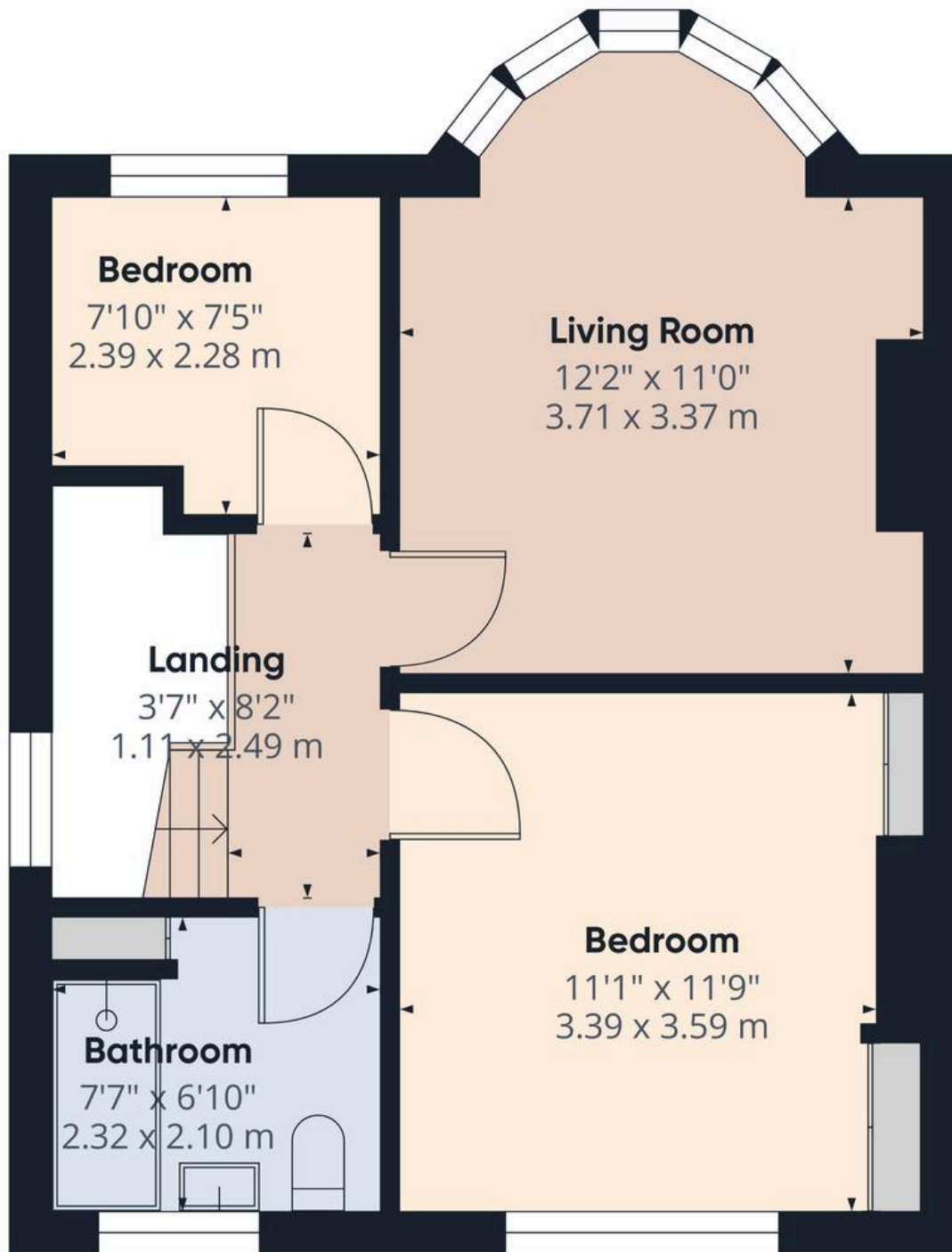
(1) Excluding balconies and terraces

Calculations reference the RICS IPMS 3C standard. Measurements are approximate and not to scale. This floor plan is intended for illustration only.

GIRAFFE 360



First Floor



Floor 1

Approximate total area⁽¹⁾

428 ft²
39.9 m²

(1) Excluding balconies and terraces

Calculations reference the RICS IPMS 3C standard. Measurements are approximate and not to scale. This floor plan is intended for illustration only.

GIRAFFE360









Embleton village is well known for its proximity to the coast, access to walking routes, local amenities and strong community feel and it will appeal to buyers seeking more than just a property, but a change in pace and quality of life.

LPG central Heating

Mains Water

Mains Waste



Northumberland Properties

12 Market Street, Alnwick - NE66 1TL

01665660910 • info@northumberlandproperties.co.uk • www.northumberlandproperties.co.uk



Northumberland
Properties