



Hawkesworth Drive, Bagshot

£175,000



Hawkesworth Drive, Bagshot, Surrey, GU19 5QY

Refurbished one bedroom first floor apartment located on the popular Connaught Park development in Bagshot. No onward chain.

FEATURES

- No onward chain
- Ideal buy to let or first time purchase
- Modern decor
- Herringbone flooring
- Electric heating
- Secondary glazing
- Easy access to junction 3 of the M3

ACCOMODATION

- Communal entrance with stairs up to first floor
- Entrance hall
- Modern fitted kitchen with breakfast bar
- open plan to lounge
- Double bedroom with cupboard
- Bathroom

OUTSIDE

- Communal garden
- Residents parking area

LEASEHOLD

- Lease remaining tbc
- Service charge tbc

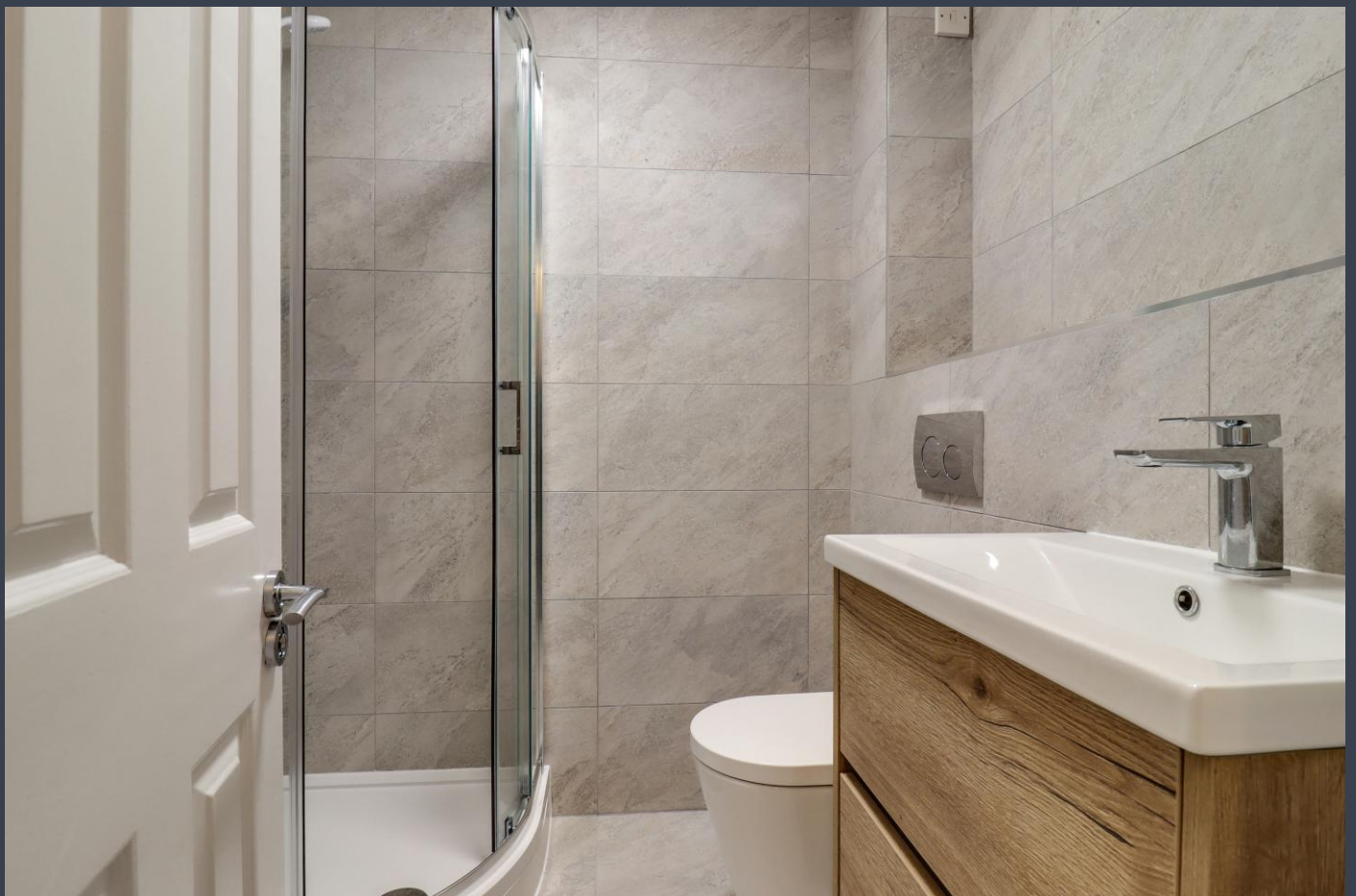
COUNCIL TAX

- Surrey Heath – band B

EPC RATING

D





Approximate Gross Internal Area
32.76 sq m / 352.62 sq ft

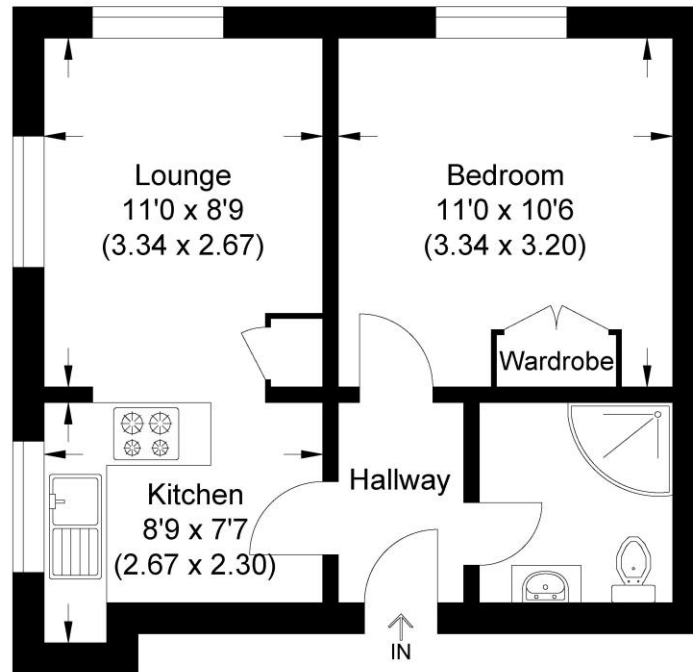


Illustration for identification purposes only, measurements are approximate, not to scale.

Disclaimer: We wish to inform prospective purchasers that we have prepared these sales particulars as a general guide. We have not carried out a detailed survey, nor tested the services, appliances and specific fittings. Room sizes are approximate and rounded; they are taken between internal wall surfaces and therefore include cupboards / shelves, etc. Accordingly, they should not be relied upon for carpeting, curtains / blinds and kitchen equipment, whether fitted or not, are deemed removable by the vendor unless specifically itemized within these.



NEWTON ROWE
SALES & LETTINGS

The Old Dairy, 7 Updown Hill, Windlesham, Surrey GU20 6AF
enquiries@newtonrowe.co.uk | 01276 986900