



Weavers Crofts

Melksham SN12 8BP

- Two double bedrooms
 - No onward chain
- Large enclosed garden
- Close to local amenities
- Great investment opportunity
- End terrace house
- Allocated parking
- Walking distance to town
- Ideal for first-time buyers

Asking Price £210,000 Freehold





A fantastic opportunity to acquire this two bedroom end of terrace home situated within a short walk of the heart of Melksham. The well proportioned accommodation comprises of entrance porch, lounge, kitchen, two bedrooms and a

Porch

Door to living room

Living Room

18'6" x 11'8"

Window to front elevation, two radiators, stairs to first floor and door to kitchen.

Kitchen

7'11" x 11'8"

Fitted with a matching range of base and eye level units with worktop space over, stainless steel sink, space for washing machine, tumble dryer and cooker, window to rear elevation, storage cupboard, radiator, door to enclosed rear garden.

Bedroom One

11'9" x 11'8"

Window to front elevation, storage cupboard, radiator.

Bedroom Two

8'0" x 11'8"

Window to rear elevation, radiator.



Bathroom

Fitted with three piece suite with comprising wash hand basin, bath with shower attachment and WC, heated towel rail.

Landing

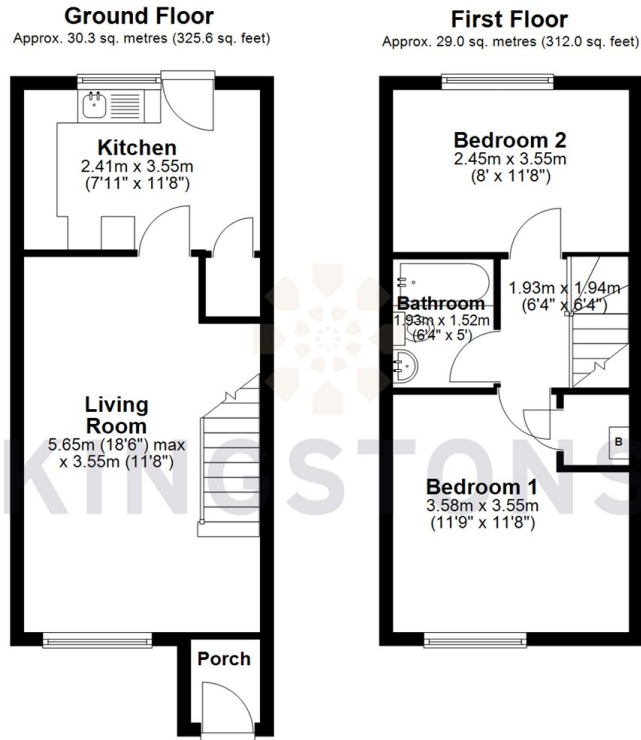
Doors to bedrooms and bathroom.

Outside

Enclosed rear garden, mostly laid to lawn with shed. Allocated parking to the front of the property.



Local Authority **Wiltshire**
Council Tax Band **B**
EPC Rating **C**



Total area: approx. 59.2 sq. metres (637.6 sq. feet)




KINGSTONS
Melksham Office

11 High Street, Melksham,
Wiltshire, SN12 6JR

Contact
01225709115
sales@kingstons.biz
www.kingstons.biz

Agents Note: Whilst every care has been taken to prepare these particulars, they are for guidance purposes only. All measurements are approximate and for general guidance purposes only and whilst every care has been taken to ensure accuracy, they should not be relied upon and potential buyers/tenants are advised to recheck the measurements.