

THE ALDER

4 Bedroom Home



Artist's Impression

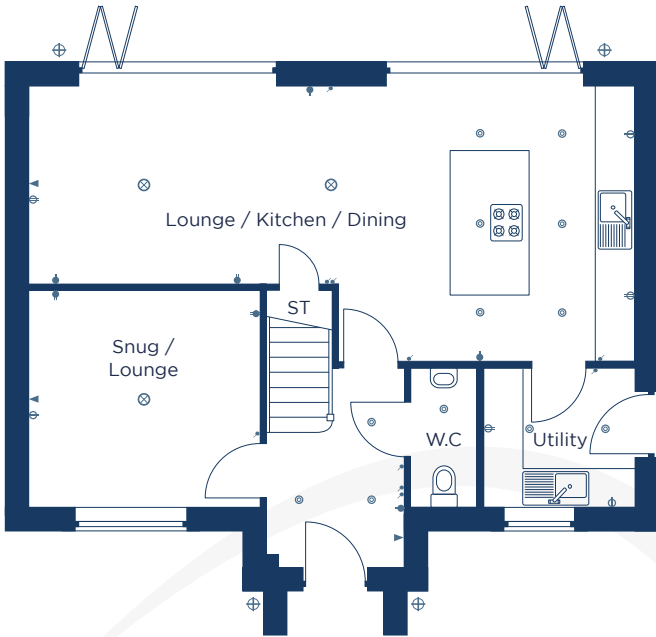
A modern four bedroom detached home.

Plots: 87, 113, 115

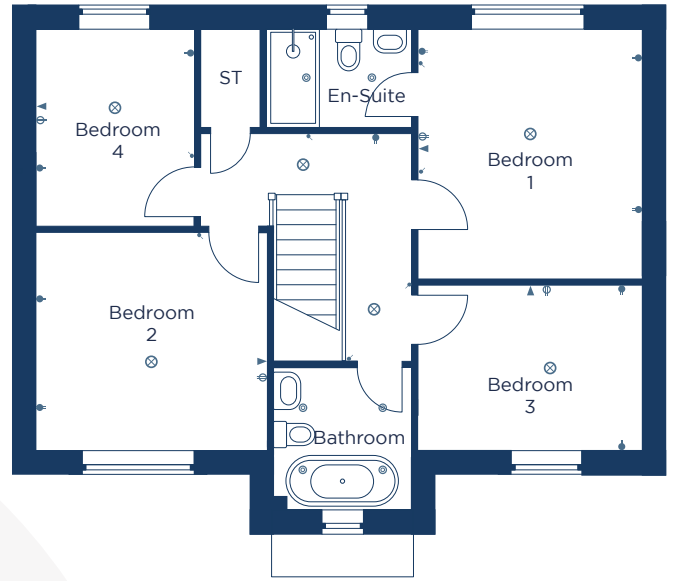
THE ALDER

4 Bedroom Home

Ground Floor



First Floor



Lounge / Kitchen / Dining
9200 x 4200 30'2" x 13'9"

Snug / Lounge
3500 x 3300 11'6" x 10'10"

Utility
2300 x 2100 7'7" x 6'11"

W.C
1000 x 2100 3'3" x 6'11"

Bedroom 1
3400 x 3800 11'2" x 12'6"

En-Suite
2200 x 1500 7'3" x 4'11"

Bedroom 2
3500 x 3300 11'6" x 10'10"

Bedroom 3
3400 x 2500 11'2" x 8'2"

Bedroom 4
2400 x 3000 7'11" x 9'10"

Bathroom
2100 x 2150 6'11" x 7'1"

● Low level socket

⊖ High level socket

⊗ Pendant light

⊕ External light

— Fluorescent light

⊙ Spotlight

⦿ Light switch

▶ TV point

▷ BT point

CONSUMER CODE FOR HOME BUILDERS

www.consumercode.co.uk

danumhomes.co.uk

All information contained in this leaflet is taken from design intent material and may be subject to further design development. Images are for illustration only and do not form part of any contract of sale. The dimensions and layouts given are estimated and for guidance only and are subject to chosen plot. T2 6663 Revision Date: 13.03.26 Revision: 02

The **Wolds**