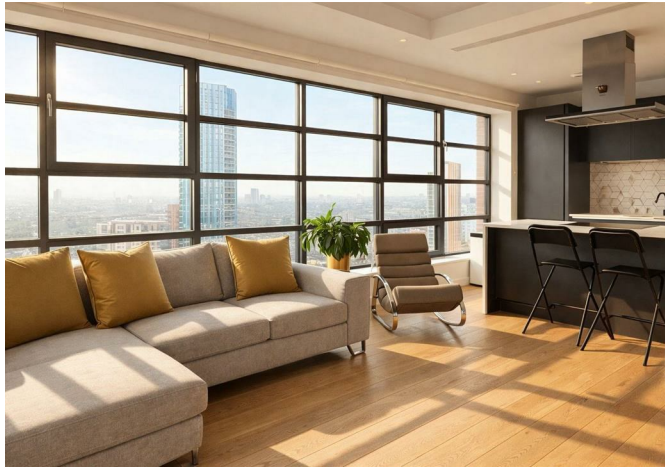




96 Lookout Lane, London, E14 0TH

£725,000



96 Lookout Lane, London, E14 0TH

£725,000

Amazing 14th floor views of the London cityscape! Luxury specification combined with London wide connectivity just minutes from your door and secure underground parking for those who drive! Barrain London are pleased to introduce this very large stylish two-bedroom apartment with 2 bathrooms (one ensuite) in popular, vibrant London City Island.

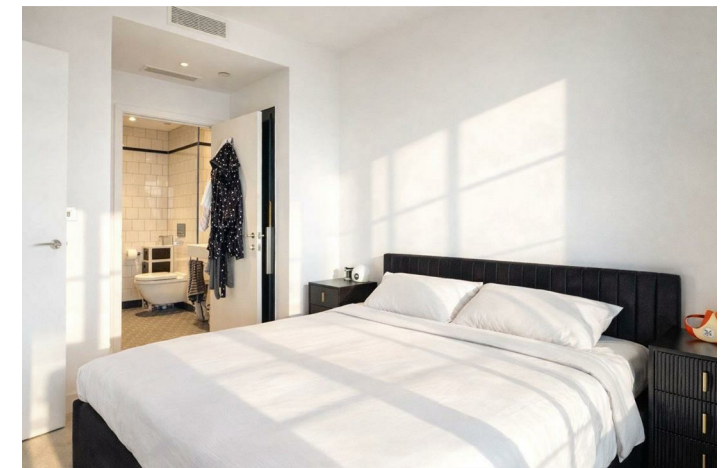
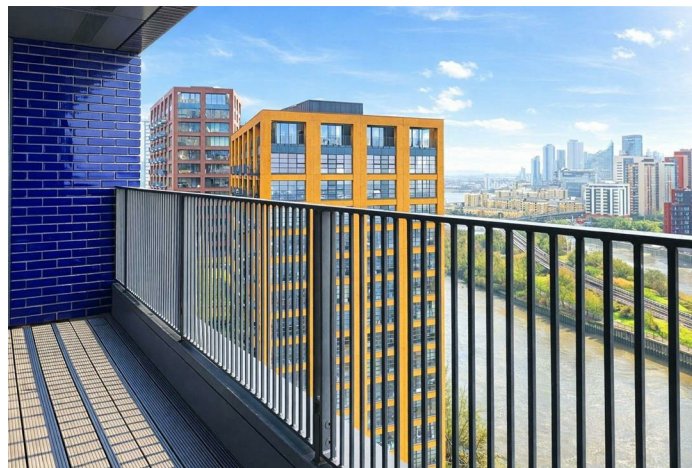
Spread over 827 square feet of open plan living accommodation, with light giving floor to ceiling windows and great views from the wide balcony, this property has all the amenities you would expect: 24/7 concierge, Residents' Gym, Sauna, Swimming Pool, and Cinema Room. Enough room to live, work, and entertain in style.

London City Island, of course is a destination in itself, with shopping, dining and entertainment options outside your door and in nearby Canning Town. However, since your new home is just 10 minutes walk to Canning Town station, DLR and Jubilee Line connections provide quick access to Greater London, also, whether you are travelling to the Westfield Stratford Mall shopping experience, to exceptional dining and entertainment options in Canary Wharf, to work in the City, or to a West End venue. Less than an hour to Heathrow!

Please call Barrain London to arrange your viewing today.

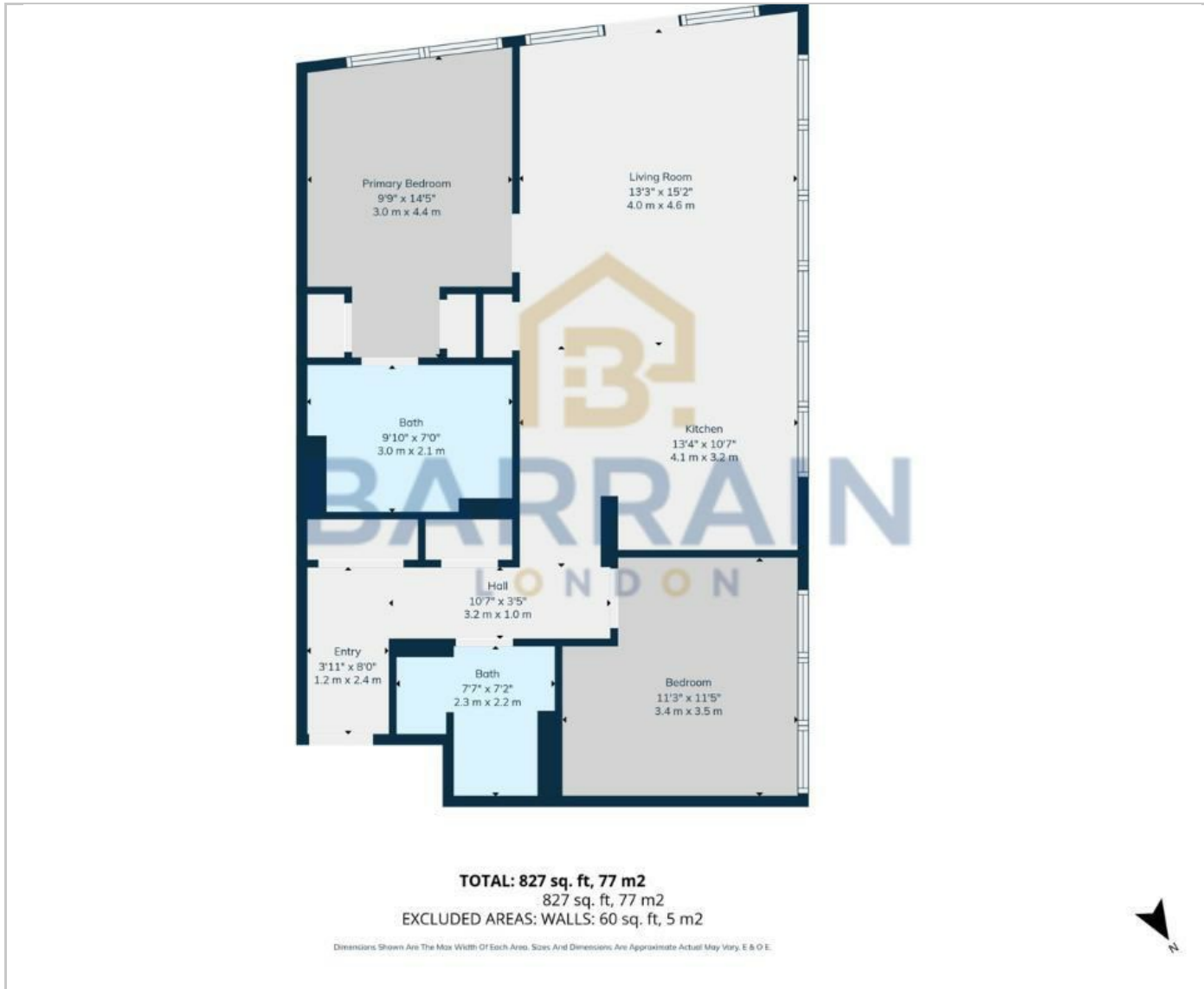
Key Features

- High in the sky panoramic balcony views! Over 800 square feet! Luxury specification!
- Large double bedrooms (one ensuite)
- Spacious, stylish, modern open plan kitchen-diner-lounge
- Moments to Canning Town station with quick Jubilee Line/DLR links across Greater London
- 24/7 Concierge, Residents' Gym, Sauna, Swimming Pool, Cinema Room
- Parking space
- Long lease
- Minutes to shopping, dining and cultural attractions in Canary Wharf and Stratford.

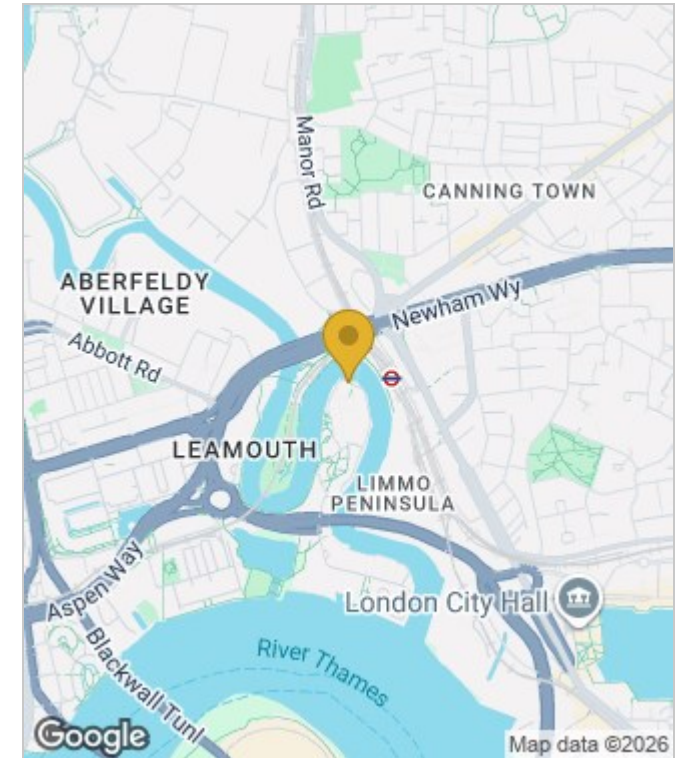


Council Tax Band: E

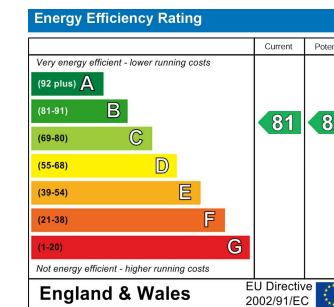
Floor Plans



Area Map



Energy Performance Graph



These particulars, whilst believed to be accurate are set out as a general outline only for guidance and do not constitute any part of an offer or contract. Intending purchasers should not rely on them as statements of representation of fact, but must satisfy themselves by inspection or otherwise as to their accuracy. No person in this firm's employment has the authority to make or give any representation or warranty in respect of the property.