



**Hadyn Park Road
W12**



Hadyn Park Road

TERRACED HOUSE

3 BEDROOMS

DOUBLE RECEPTION WITH WOODEN FLOORS

SPACIOUS RECENTLY FITTED KITCHEN

NEW FAMILY BATHROOM AND ENSUITE SHOWER ROOM

QUIET RESIDENTIAL LOCATION

ASKEW VILLAGE

PRIVATE GARDEN

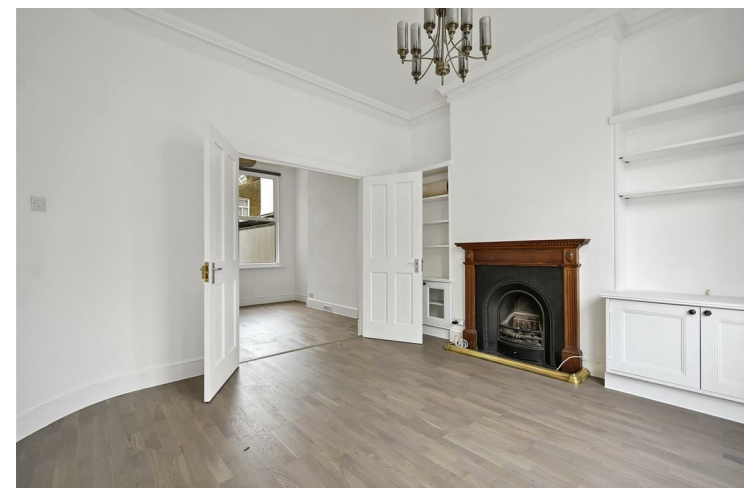
UNFURNISHED

AVAILABLE 8TH JUNE

Bright 3 bedroom terraced house, with double reception, wooden floors, stylish fitted kitchen, family bathroom, ensuite shower room and private garden. Located in a quiet residential street close to Ravenscourt Park and the shops and amenities on Askew Road. Unfurnished, available 8th June. Council Tax band E.

£876 PER WEEK

SUBJECT TO CONTRACT











BASEMENT
GROSS INTERNAL
FLOOR AREA 115 SQ FT

GROUND FLOOR
GROSS INTERNAL
FLOOR AREA 564 SQ FT

FIRST FLOOR
GROSS INTERNAL
FLOOR AREA 562 SQ FT

APPROX. GROSS INTERNAL FLOOR AREA: 1241 SQ FT/ 115 SQM

PROPERTY PHOTO PLANS.co.uk
ONE STOP SHOP FOR PROPERTY MARKETING

Whilst every attempt has been made to ensure the accuracy of the floor plan contained here, measurements of the doors, windows, rooms and any other items are approximate and no responsibility is taken for any errors, omissions, or miss-statement. This plan is for illustrative purposes only and should be used as such by any prospective client. The services, systems and appliances shown have not been tested and no guarantee as to the operability or efficiency can be given.