



Bell Road, TW3

£249,950

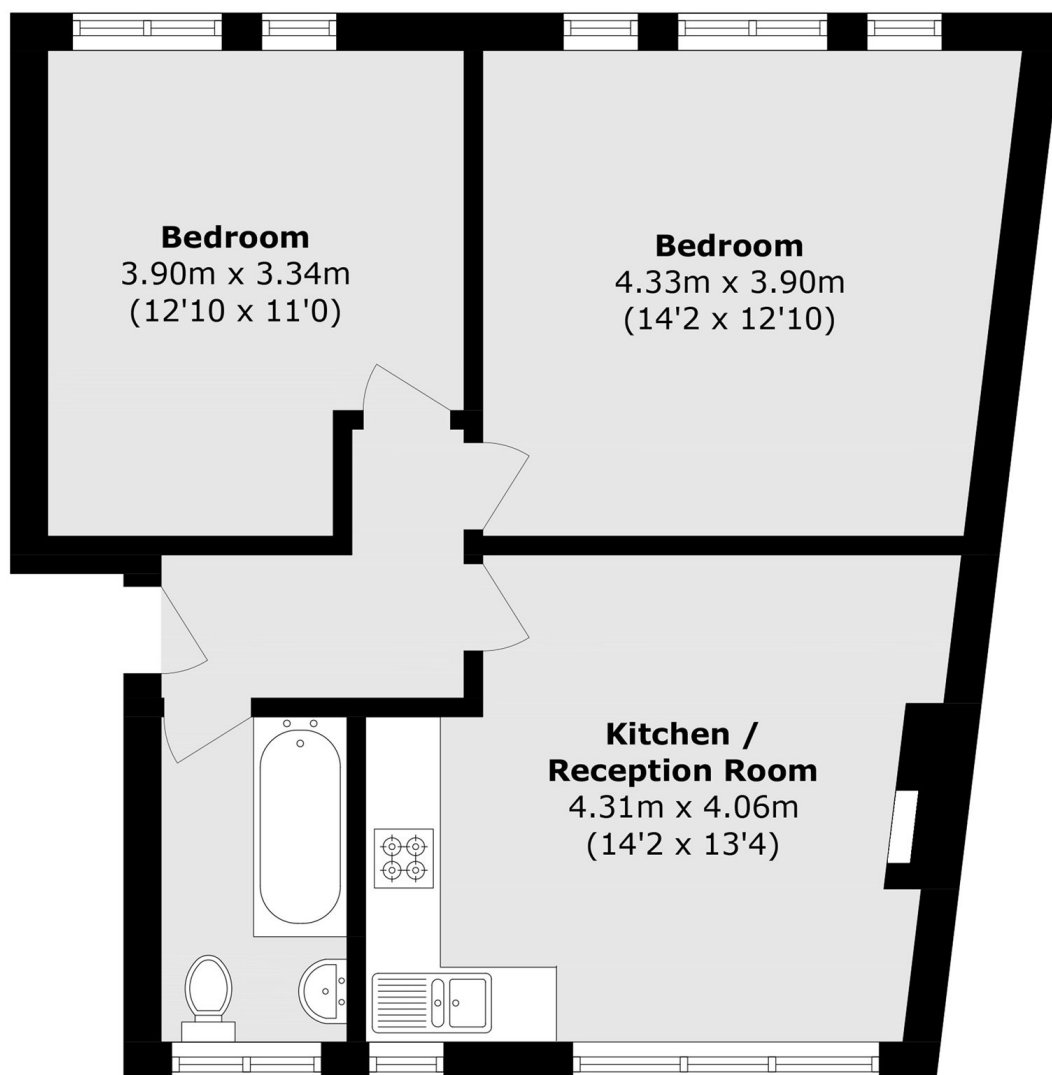
Offered to the market with no onward chain, this fantastic two bedroom apartment presents an excellent opportunity for both first time buyers and investors alike. Ideally situated in the heart of Hounslow, the property benefits from its own rear access and features two spacious double bedrooms, a bright open-plan kitchen/reception room and a modern three-piece bathroom suite. Additional advantages include a recently extended lease and strong rental potential, making this an attractive and versatile purchase.

Bell Grove Mansions is a popular and centrally located development located within walking distance to Hounslow High Street, bus stops and tube stations. Nearby towns such as Whitton and Twickenham are also within easy reach.

Features

- Two Double Bedrooms
- Bell Grove Mansions
- Centrally Located
- Fantastic Rental Yield
- Long Lease
- No Chain

Bell Road, Hounslow, TW3



Total area (approx.): 54.7 sq. m (588.7 sq. ft)