



## Henry Doulton Drive, SW17

£2,500 Per calendar month

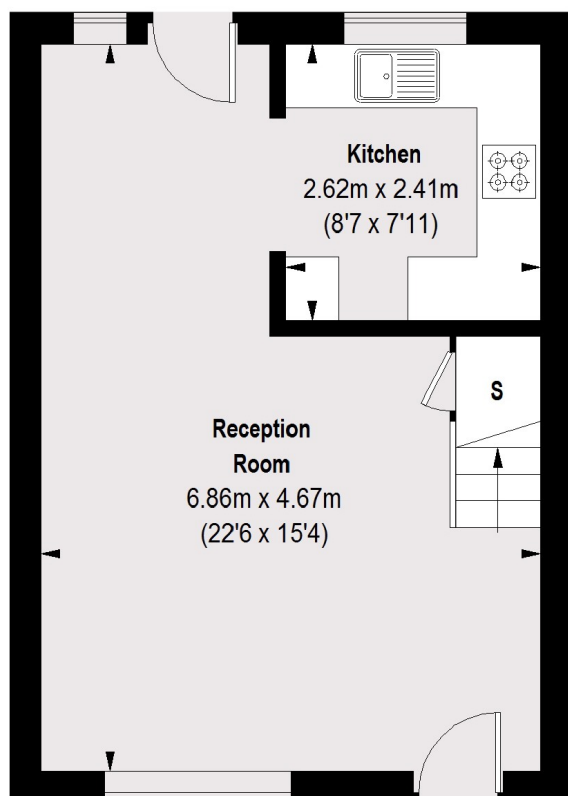
A three bedroom house situated in the popular Heritage Park Development in Tooting Bec. Comprising a spacious reception and dining room, a separate kitchen, three double bedrooms and a large private garden.

Henry Doulton Drive is situated in the popular Heritage Park development. Tooting Bec Northern Line station is within a short walk as are the beautiful open spaces that Tooting Bec Common has to offer.

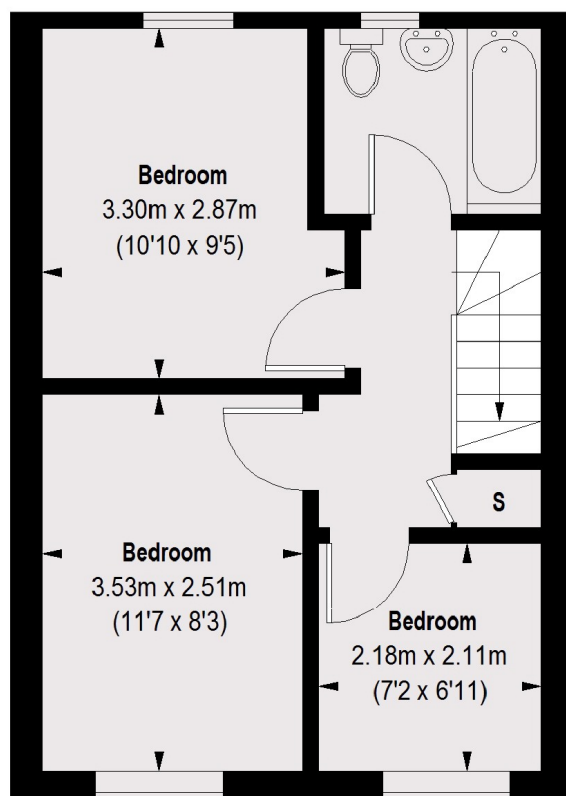
### Features

Three Bedroom House  
Separate Kitchen  
Large Private Garden  
Popular Development  
Tooting Commons  
Tooting Bec Tube

# Henry Doulton Drive, London, SW17



**GROUND FLOOR**



**FIRST FLOOR**

TOTAL APPROX. FLOOR AREA  
728 SQ. FT. (67.6 SQ. M.)