



## MONTAGU MANSIONS, W1U

£2,900,000

Four double bedrooms  
Share of freehold  
Meticulously refurbished  
Private entrance  
Porter  
Baker street station

@marshandparsons  
marshandparsons.co.uk

MARSH &  
PARSONS

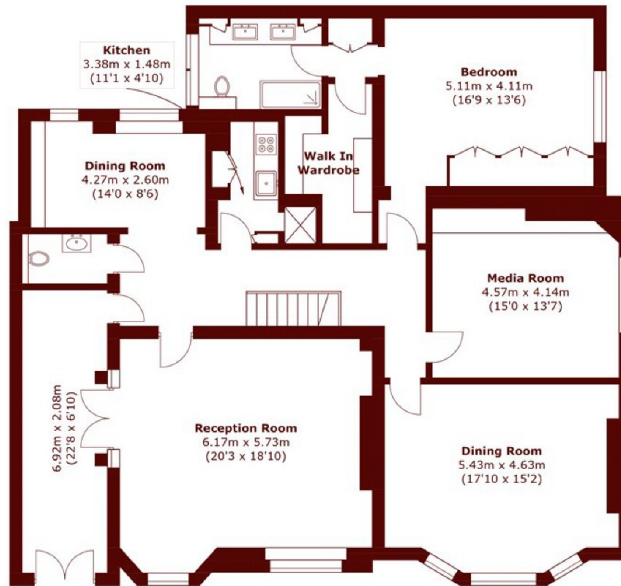


# ABOUT THE PROPERTY

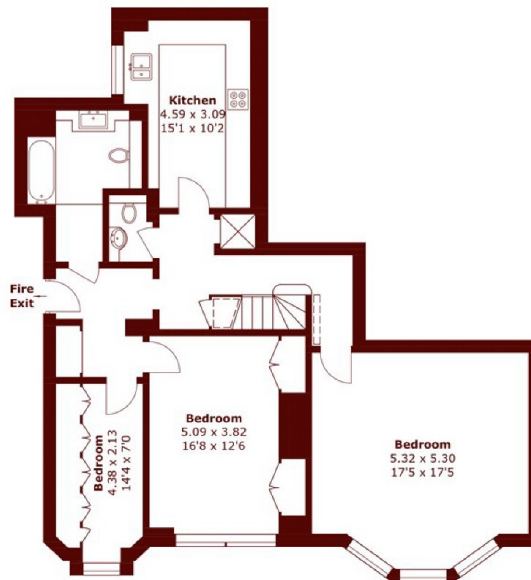
Measuring in excess of 2,900 sq. Ft of duplex living space this property has been meticulously renovated and presented in beautiful condition throughout. The property has its own private entrance leading into a wide and grand entrance hallway. This gives access to the entire ground floor living which consists of a spacious reception, secondary kitchen, master bedroom with an impressive walk-in wardrobe and en-suite, dining room and additional reception room. Leading downstairs there are a further three double bedrooms, one bathroom and separate w/c. This floor also homes the generous size kitchen and dumbwaiter to make entertaining guests effortless.



# STEP INSIDE MONTAGU MANSIONS



**Raised Ground Floor**



**Lower Ground Floor**

Total area (approx.): 276.4 sq. m (2,975.1 sq. ft)

**Marylebone & Mayfair**  
020 7935 1775

Energy Rating: D We aim to make our particulars both accurate and reliable. However, they are not guaranteed; nor do they form part of an offer or contract. If you require clarification on any points then please contact us, especially if you're traveling some distance to view. Please note that appliances and heating systems have not been tested and therefore no warranties can be given as to their good working order

**MARSH &  
PARSONS**