

## Tremlett Grove, N19

£575,000

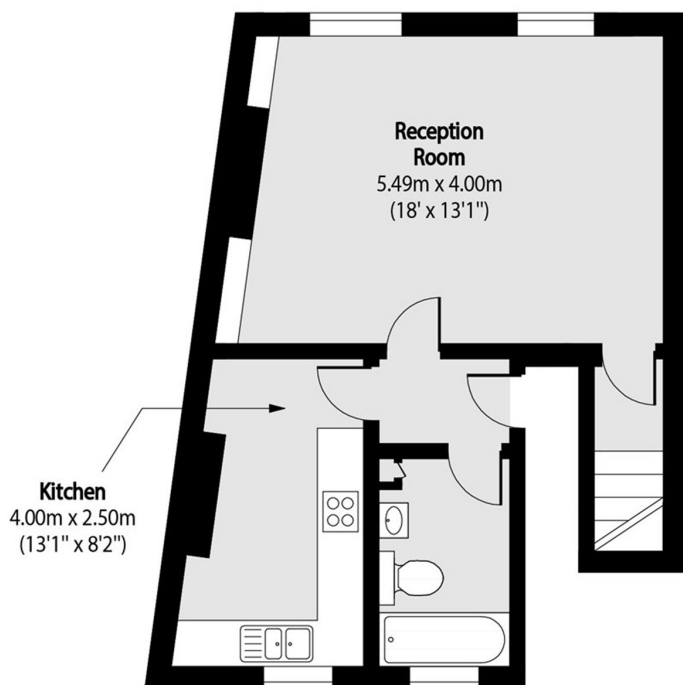
A charming and well-presented two bedroom apartment, set over the second and third floors of a stunning Victorian conversion. This property has a separate reception room, a modern kitchen and a family bathroom.

Tremlett Grove is located close to both Archway and Tufnell Park stations, the excellent range of independent retailers on Junction Road and Fortess Road, and is close to both Hampstead Heath and Waterlow Park.

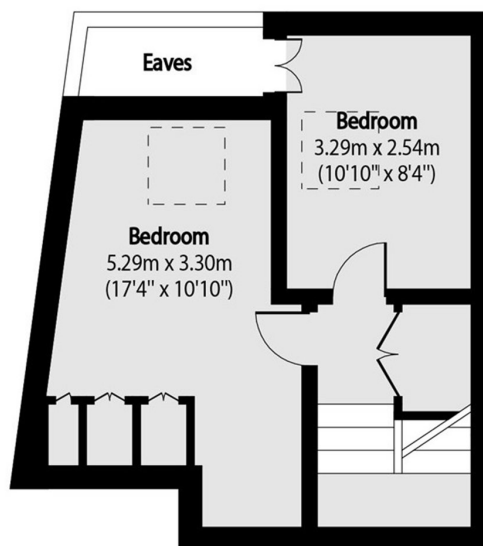
### Features

- Two Bedrooms
- Reception Room
- Beautifully Presented
- Victorian Conversion
- Great Transport Links
- Share of Freehold

# Tremlett Grove, London, N19



**Second Floor**



**Third Floor**

Total area (approx): 69.56 sq m (749 sq. ft)  
(Excluding eaves )