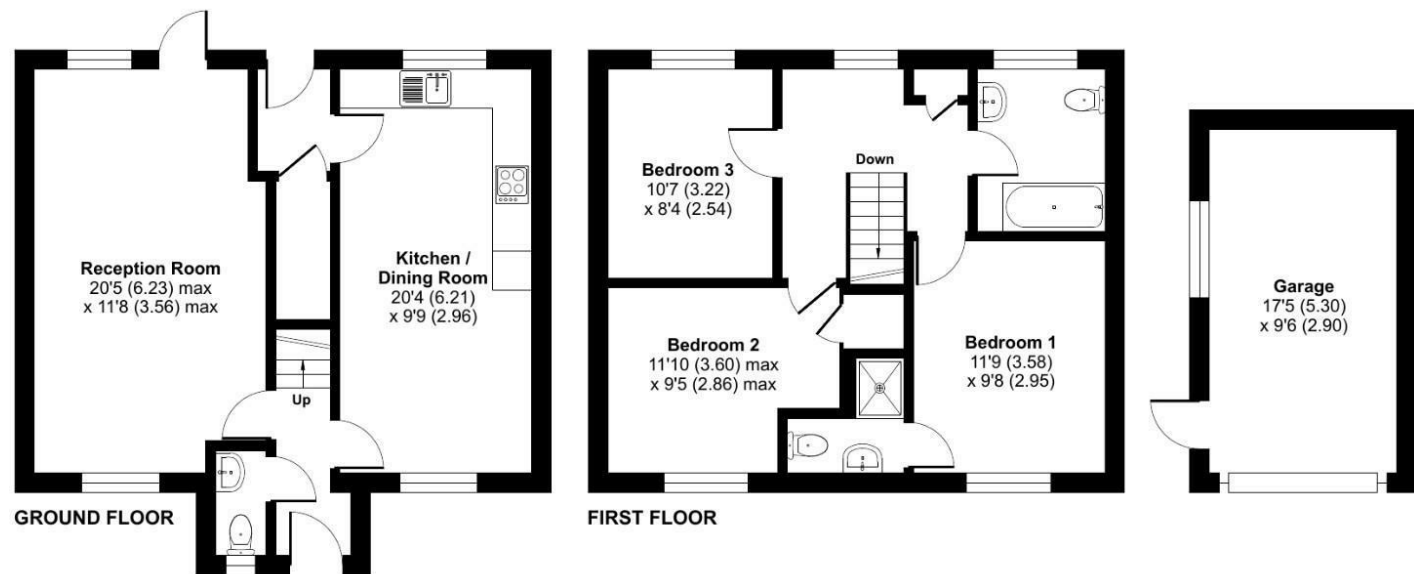


FOR SALE

2 Corndon Drive, Montgomery, SY15 6RE



Approximate Area = 1059 sq ft / 98.4 sq m  
Garage = 165 sq ft / 15.3 sq m  
Total = 1224 sq ft / 113.7 sq m  
For identification only - Not to scale



Floor plan produced in accordance with RICS Property Measurement 2nd Edition, incorporating International Property Measurement Standards (IPMS2 Residential). © nichecom 2026. Produced for Halls. REF: 1441074



FOR SALE

Offers in the region of £315,000

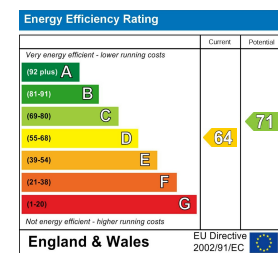
2 Corndon Drive, Montgomery, SY15 6RE

Situated in the popular town of Montgomery this three double bedroom detached family home comprises entrance hall, W.C., lounge with picture window overlooking the rear garden, kitchen/diner, rear hall, landing, master bedroom with en suite, two further bedrooms and family bathroom. The property has a lawned front garden, single garage, paved and gravelled seating area with lawned gardens and open aspect.

**Property to sell?** We would be delighted to provide you with a free no obligation market assessment of your existing property. Please contact your local Halls office to make an appointment. **Mortgage/financial advice.** We are able to recommend a completely independent financial advisor,

who is authorised and regulated by the FCA. Details can be provided upon request. **Do you require a surveyor?** We are able to recommend a completely independent chartered surveyor. Details can be provided upon request.

Energy Performance Rating



01938 555552

Welshpool Sales  
14 Broad Street, Welshpool, Powys, SY21 7SD  
E: welshpool@hallsgb.com



IMPORTANT NOTICE. Halls Holdings Ltd and any joint agents for themselves, and for the Vendor of the property whose Agents they are, give notice that: (i) These particulars are produced in good faith, are set out as a general guide only and do not constitute any part of a contract (ii) No person in the employment of or any agent of or consultant to Halls Holdings has any authority to make or give any representation or warranty whatsoever in relation to this property (iii) Measurements, areas and distances are approximate, Floor plans and photographs are for guidance purposes only (photographs are taken with a wide angled / zoom lenses) and dimensions shapes and precise locations may differ (iv) It must not be assumed that the property has all the required planning or building regulation consents. Halls Holdings, Bowmen Way, Shrewsbury, Shropshire SY4 3DR. Registered in England 06597073.



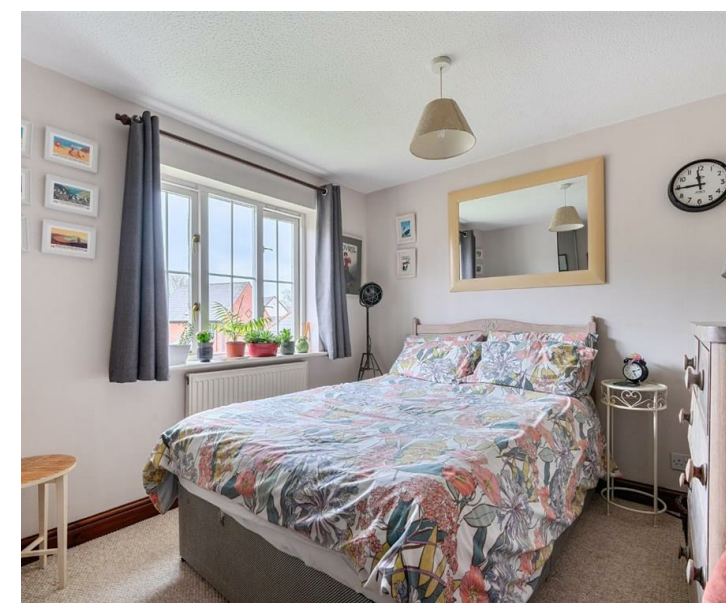
2 Reception Room/s



3 Bedroom/s



2 Bath/Shower Room/s



- Sought-after location in the popular town of Montgomery
- Three-bedroom detached family home
- Master bedroom with en suite
- Modern kitchen/diner ideal for family living and entertaining
- Lawned gardens, paved seating area

**Situation**

Nestled within the highly sought-after town of Montgomery, this attractive family home enjoys a prime position just a short stroll from the local primary school, shops, and everyday amenities—perfect for convenient, family-friendly living.

The property is ideally located for easy access to nearby towns, with Welshpool and Newtown both just a short drive away, offering a wider range of supermarkets, restaurants, and railway stations for commuting and leisure.

For those needing to travel further afield, Shrewsbury is approximately 25 minutes away, providing excellent links to the road and motorway network, with straightforward routes to Chester, Wrexham, and Telford. This well-connected yet peaceful setting makes the home particularly appealing to families and commuters alike, combining the charm of a popular market town with excellent accessibility.

A wonderful opportunity to enjoy a tranquil lifestyle without compromising on convenience.

**Accommodation**

The well-presented family accommodation is thoughtfully arranged and begins with a welcoming entrance hall, complete with staircase access and a convenient ground floor W.C.

A spacious front-to-back lounge provides a bright and versatile living area, with direct access onto the south-facing rear patio—perfect for relaxing or entertaining guests in the warmer months.

The kitchen/diner is fitted with a range of wall and base units, complemented by a tiled floor and oil-fired boiler, creating a practical and sociable space for everyday family life. To the rear, an additional entrance hall offers further convenience, along with a useful understairs storage cupboard.

The first floor continues to impress, with a bright and airy landing featuring a window that enjoys delightful views over the rear garden, neighbouring football pitch, and the scenic Kerry Ridge beyond. A useful linen cupboard provides additional storage.

The generous principal bedroom is positioned to the front of the property, offering a pleasant outlook and the added luxury of a private en suite shower room, complete with a roof light that fills the space with natural light.

Two further well-proportioned bedrooms enjoy views to both the front and rear, making them ideal for family living, guests, or home working. A spacious family bathroom, finished to a good standard, completes the first floor accommodation.

**Externally**

Externally, the property enjoys a charming frontage with well-maintained lawned gardens, creating an inviting first impression. A single garage and off-street parking provide practicality and convenience, while a pedestrian gate grants easy access to the rear garden, enhancing the flow and usability of the outdoor space.

The rear garden is a true highlight of the property, featuring a paved south-facing seating area ideal for alfresco dining, alongside a charming gravelled spot perfect for enjoying the sunsets. Well-maintained lawned gardens provide additional space for relaxing or family activities, and the oil tank.

**Services**

Mains electricity, mains water, mains drainage and oil central heating are connected at the property. None of these services have been tested by Halls.

**Local Authority/Tax Band**

Powys County Council, Ty Maldwyn, Brook Street, Welshpool, SY21 7PH. Telephone: 01938 553001  
The property is in band 'E'

**Directions**

Postcode for the property is SY15 6RE

What3Words Reference is presented.king.practical

**Viewings**

Strictly by appointment only with the selling agents: Halls, 14 Broad Street, Welshpool, Powys, SY21 7SD.

**Anti Money Laundering Checks**

We are legally obligated to undertake anti-money laundering checks on all property purchasers. Whilst we are responsible for ensuring that these checks, and any ongoing monitoring, are conducted properly; the initial checks will be handled on our behalf by a specialist company, Movebutler, who will reach out to you once your offer has been accepted.

The charge for these checks is £30 (including VAT) per purchaser, which covers the necessary data collection and any manual checks or monitoring that may be required. This cost must be paid in advance, directly to Movebutler, before a memorandum of sale can be issued, and is non-refundable. We thank you for your cooperation.

**Websites**

Please note all of our properties can be viewed on the following websites:  
www.hallsgb.com  
www.rightmove.co.uk  
www.onthemarket.com