



Station Road, Winslow, MK18 3DZ

Guide Price £315,000

01280 460360

sales@hatfieldshaw.co.uk

www.hatfieldshaw.co.uk

**Hatfield
Shaw & Co**
INDEPENDENT ESTATE AGENTS



Bedrooms: 2

Bathrooms: 1

Receptions: 1

A well-presented and deceptively spacious two-bedroom character home, ideally situated in the heart of Winslow, combining period charm with modern-day living.

The ground floor offers a bright and generously proportioned open-plan lounge/dining space, featuring wood-effect flooring and an abundance of natural light, creating a versatile and inviting living area. To the rear, a modern fitted kitchen provides a range of units, integrated oven, hob and extractor, with access through to the garden and leading to a spacious ground floor bathroom fitted with a contemporary three-piece suite, including a shower over the bath.

Upstairs, the property continues to impress with two well-proportioned double bedrooms, both redecorated in neutral tones and finished with newly fitted carpets.

Externally, the property benefits from a good-sized enclosed rear garden, offering a combination of lawn and mature planting, along with a useful storage shed, ideal for those looking to create an outdoor entertaining space or further enhance the garden.

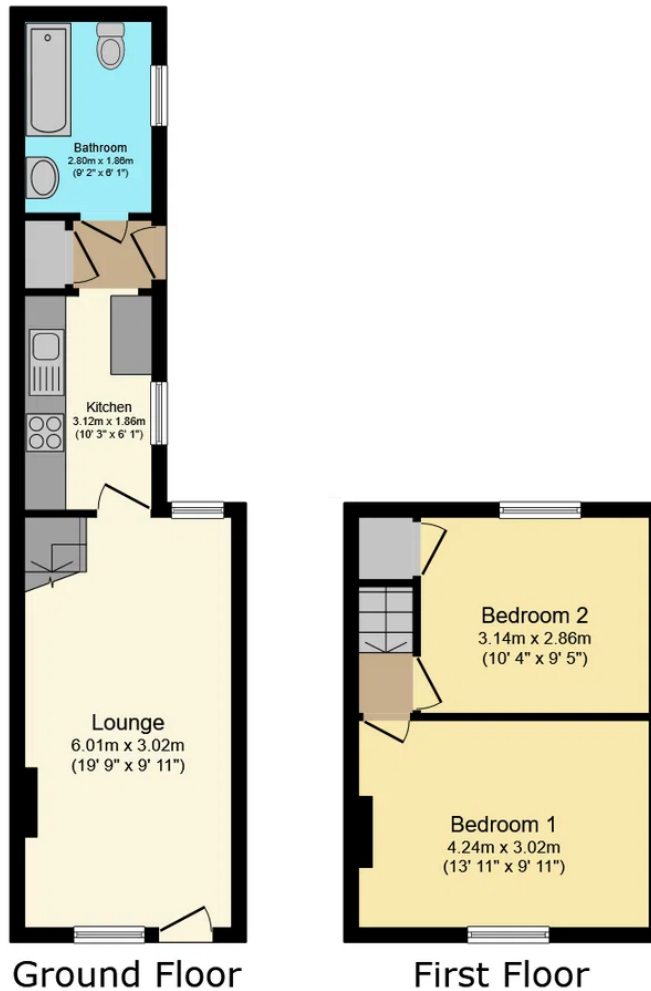
Further benefits include gas central heating and a central location within walking distance of Winslow's amenities, as well as the forthcoming Winslow train station, expected to open later this year.

An excellent opportunity for first-time buyers, downsizers or investors seeking a character home within a highly sought-after market town.

Freehold. Not listed. Conservation area. EPC band D. Council tax band B. Mains gas, electricity, water, and drainage. Gas Central heating. Traditional solid brick construction. Ultrafast broadband (1000 Mbps) available. "Good outdoor and in-home mobile phone coverage" (EE). Very low risk of flooding. No official parking.







Total floor area: 53.4 sq.m. (575 sq.ft.)

This floor plan is for illustrative purposes only. It is not drawn to scale. Any measurements, floor areas (including any total floor area), openings and orientations are approximate. No details are guaranteed, they cannot be relied upon for any purpose and do not form any part of any agreement. No liability is taken for any error, omission or misstatement. A party must rely upon its own inspection(s). Powered by www.Propertybox.io



These particulars are intended as a guide only and do not constitute part of an offer or contract. All descriptions, dimensions, and other details are provided in good faith but should be independently verified. Any reference to alterations or use is not a statement that any necessary planning permission or Building Regulations approval has been obtained.