



Artichoke Hill, E1W

£597 Per week

A well proportioned two bedroom property in West Wapping. This apartment has two double bedrooms, has a private balcony and is refurbished to a high standard.

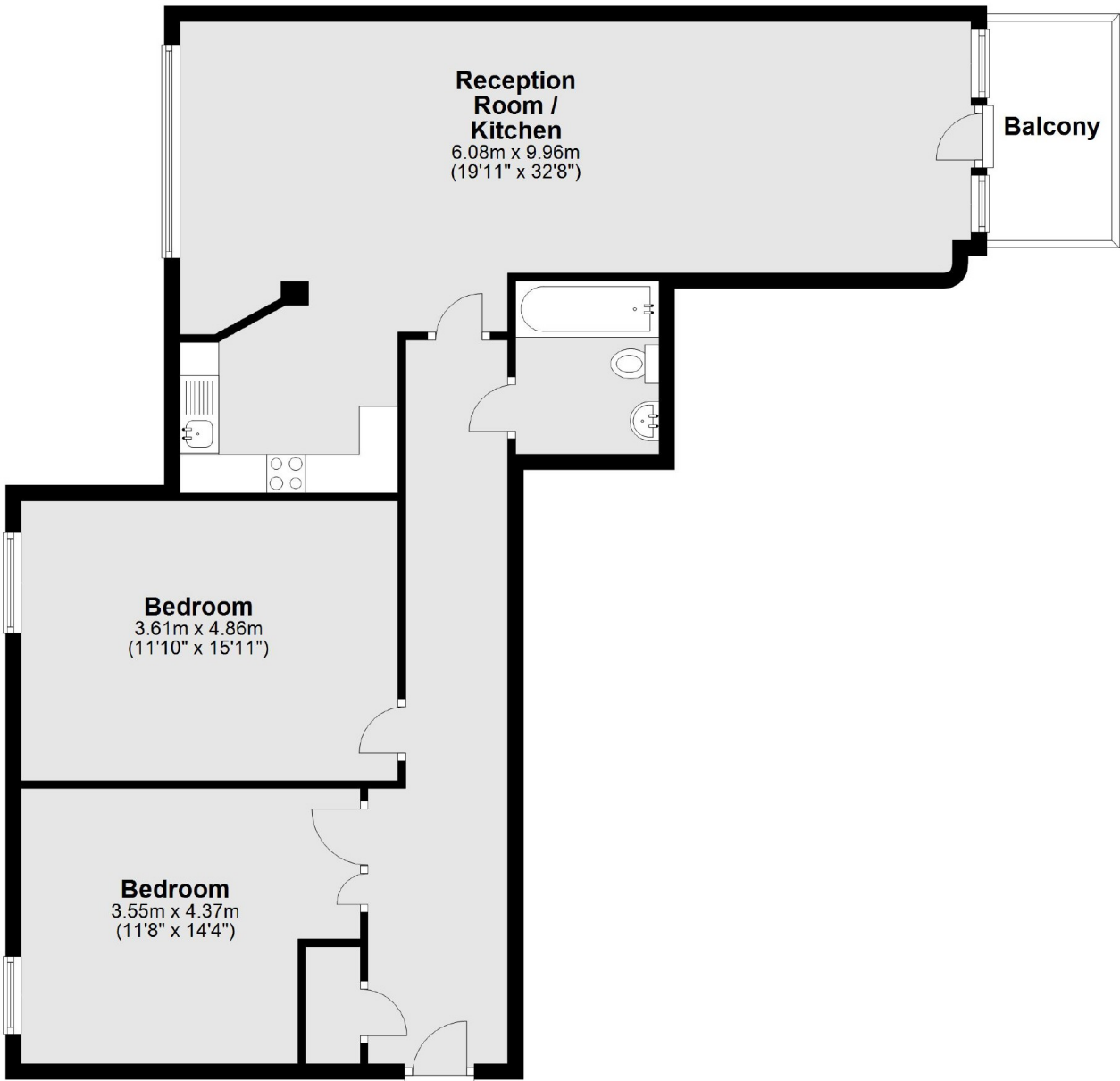
Artichoke Hill is close to Tower Hill Station and Shadwell DLR with Aldgate and Aldgate East Tube just a little further but still within easy walking distance.

Features

- Two Bedrooms
- One Bathroom
- First Floor
- Private Balcony
- Recently Refurbished
- Ample Storage

Artichoke Hill, London, E1W

First Floor



Main area: Approx. 95.4 sq. metres (1026.8 sq. feet)
Plus balconies, approx. 4.6 sq. metres (49.0 sq. feet)