



**WETHERELL**  
MAYFAIR'S FINEST PROPERTIES



## Chesterfield Hill, W1J

**£29,900 PCM**

An exceptional six bedroom new build townhouse set behind a restored, original facade. Meticulously refurbished, the property features the finest hand crafted materials, lighting and bespoke joinery.

With its grand entrance hall, this property creates a lasting first impression. Leading smoothly onto the elegant open plan kitchen/dining room with its own private patio, the ground floor provides the perfect setting for entertaining.

Spread over seven floors, the accommodation comprises of four bedroom suites and an additional top floor bedroom/study, reception room, office, open-plan kitchen/dining room, games room, cinema room, staff quarters, passenger lift, terrace and patio.

Located in the heart of the Mayfair Village and close to the picturesque Mount Street Gardens, the property is well placed for enjoying the best Mayfair has to offer in fine dining, shopping and art.

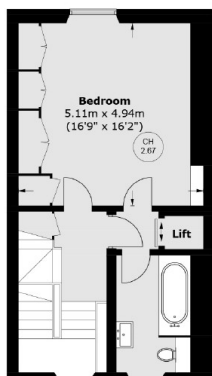


## FEATURES

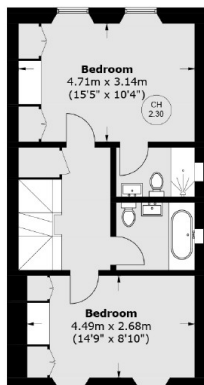
- Townhouse • Six Bedrooms • Open-Plan Kitchen/Dining • Cinema Room • Lift • Terrace •



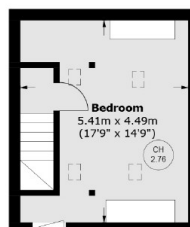
# Chesterfield Hill, London, W1J



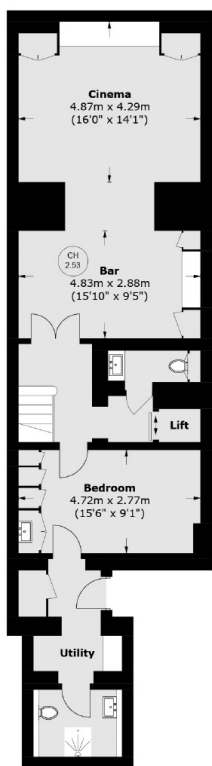
**Third Floor**



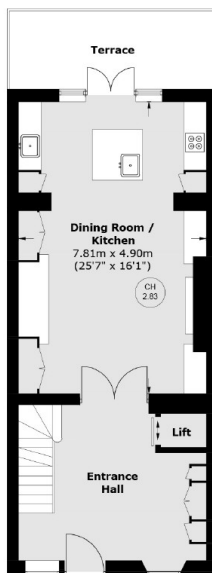
**Fourth Floor**



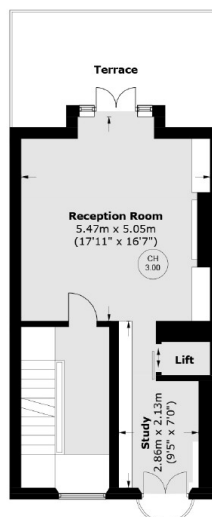
**Fifth Floor**



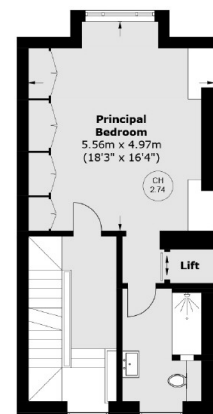
**Lower Ground Floor**



**Ground Floor**



**First Floor**



**Second Floor**

Total area (approx.): 353.5 sq. m (3,805.0 sq. ft)  
Terrace : 27.1 sq. m (291.7 sq. ft)



**WETHERELL**  
MAYFAIR'S FINEST PROPERTIES

102 Mount Street,  
London, W1K 2TH

T: 020 7529 5588  
E: rentals@wetherell.co.uk

We aim to make our particulars both accurate and reliable. However they are not guaranteed; nor do they form part of an offer or contract. If you require clarification on any points then please contact us, especially if you're traveling some distance to view. Please note that appliances and heating systems have not been tested and therefore no warranties can be given as to their working order.



**RICS** | Regulated  
Estate Agent  
and Letting Agent

wetherell.co.uk