



Let **UK** Home

2 Bedrooms

Flat

Located in London

£4,650,000



info@letukhome.co.uk

<https://www.letukhome.co.uk/>

01795 358 886



Blenheim House, Crown Square London

SE1 2SF



Let UK Home presents this bright two-bedroom apartment in Blenheim House in One Tower Bridge.

This property comprises a large bright open plan kitchen and living room leading to terrace with great views, two bedrooms with wardrobes and ensembles, a large family sized bathroom and ample storage.

Residents of this exceptional development will have access to Swimming Pool, Private Health Club, SPA Center, Sauna&Steam Room and Therapy Room, etc. Located outdoors, homeowners can enjoy private Courtyard Gardens with exquisite water features, fountains and lotus ponds, as well as Landscape Greenery Park Square.

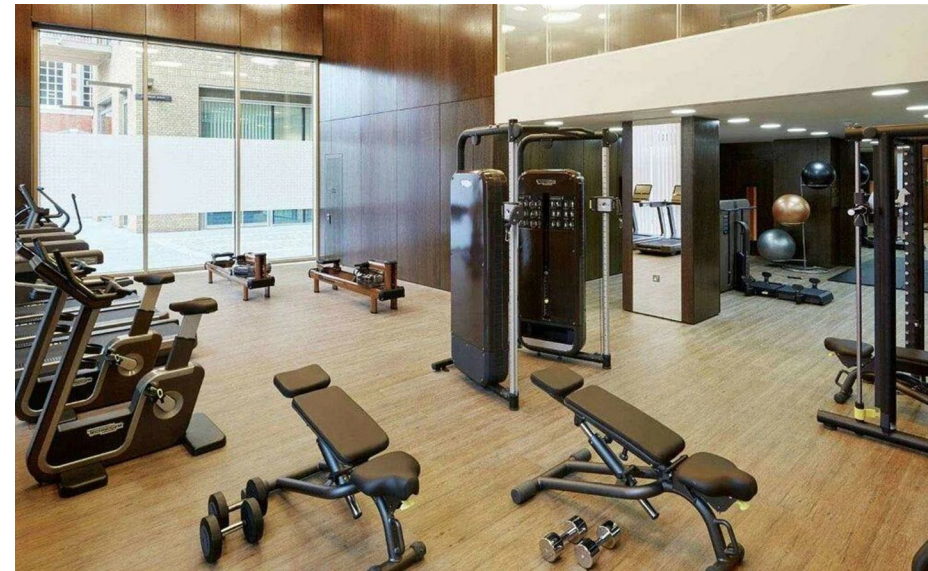
This property is located in a popular area of London. You can easily reach major universities in London from Tower Bridge One. The subway makes it easy to access: KCL, LSE, UCL, UAL, etc. You can reach the London Bridge subway/rail station by walking. You can take the Jubilee Line and the Northern Line subway, as well as the intercity trains of Southern, Southeastern and Thameslink. You can also reach the Tower Hill subway station by walking. You can take the District Line and the Circle Line. You can reach the Tower Gateway station by taking the DLR.

Blenheim House, Crown Square London

£4,650,000 Leasehold



- 3rd Floor
- Private Health Club
- Sauna&Steam Room
- Courtyard Gardens
- EPC Rating: B
- Swimming Pool
- SPA Center
- Therapy Room
- Landscape Greenery Park Square





Let **UK** Home

3F 2 Eastbourne Terrace
Paddington
London
W2 6LG

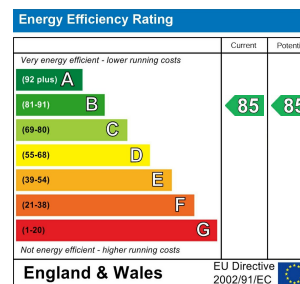
01795 358 886

info@letukhome.co.uk

Council Tax Band: F

Local Authority:

Agents Note: Whilst every care has been taken to prepare these particulars, they are for guidance purposes only. All measurements are approximate and are for general guidance purposes only and whilst every care has been taken to ensure their accuracy, they should not be relied upon and potential buyers/tenants are advised to recheck the measurements.



<https://www.letukhome.co.uk/>