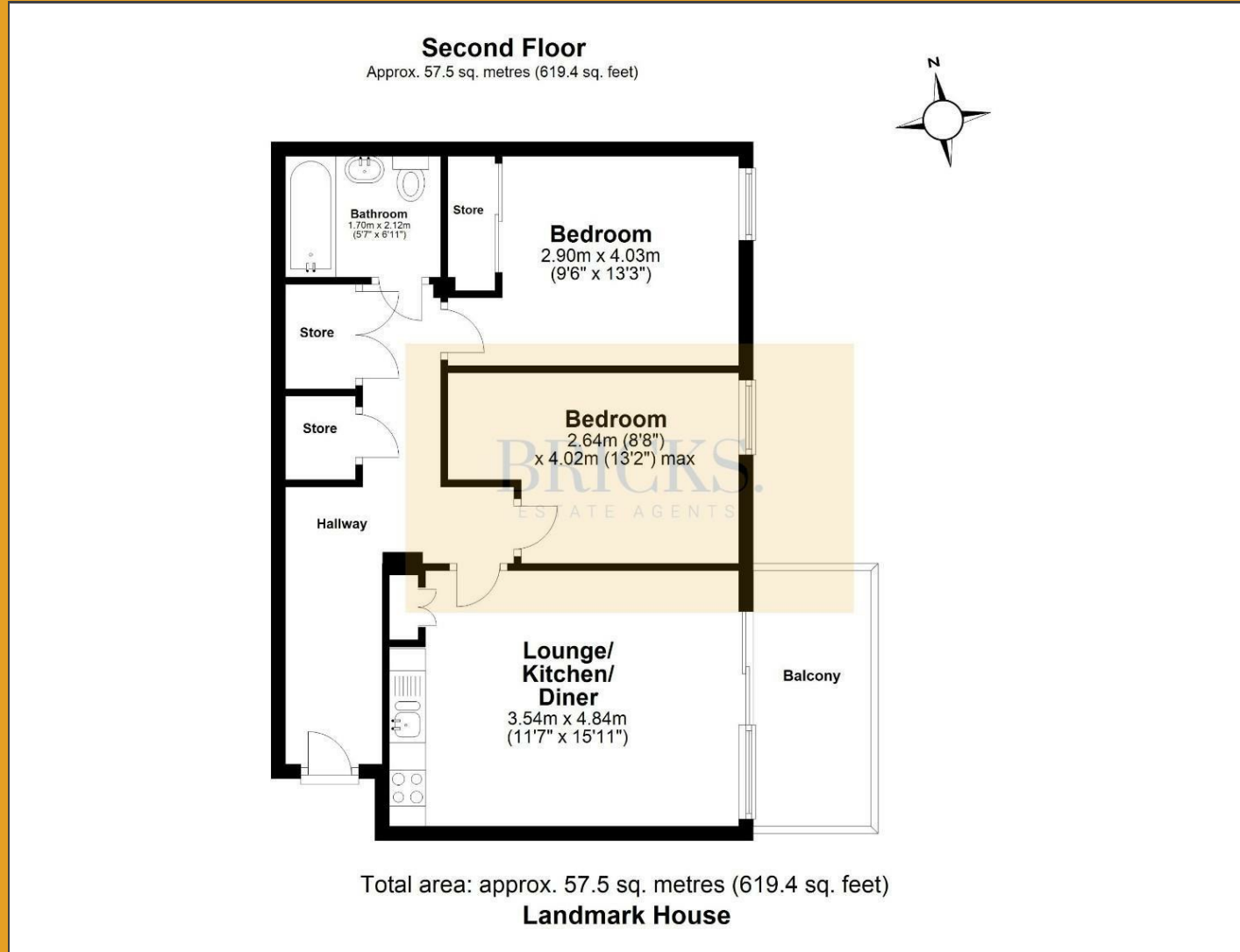


# Floor Plan

# BRICKS.




ESTATE AGENTS

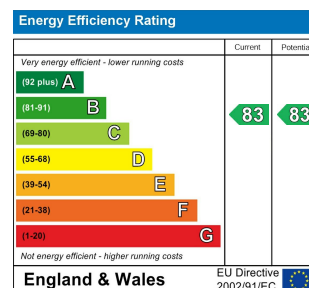


**£2,000 Per month**

These particulars, whilst believed to be accurate are set out as a general outline only for guidance and do not constitute any part of an offer or contract. Intending purchasers should not rely on them as statements of representation of fact, but must satisfy themselves by inspection or otherwise as to their accuracy. No person in this firm's employment has the authority to make or give any representation or warranty in respect of the property.

## Contact Us

-  0203 634 9998
-  [hello@bricksestateagents.co.uk](mailto:hello@bricksestateagents.co.uk)
-  186 Queens Road, Buckhurst Hill, Essex, IG9 5BD



## 18 Landmark House The Broadway, Loughton, IG10 2FA

Bricks Estate Agents are delighted to offer this stunning second floor two bedroom apartment located in the prestigious Landmark House.

As you step into this exquisite property, you are greeted by a remarkably spacious entrance hall leading to two generously sized double bedrooms. The elegantly designed three-piece bathroom suite adds a touch of sophistication. The highlight of this apartment is the expansive open-plan living and kitchen area, complete with top-of-the-line SMEG appliances and a private balcony, perfect for relaxing evenings.

This property also boasts ample storage space, well-maintained communal areas with lift access, and an allocated parking space for your convenience.

Situated in the sought-after area of Loughton, this apartment offers a blend of modern living and convenience. With easy access to local amenities, transport links, and green spaces, Landmark House provides the perfect setting for a sophisticated urban lifestyle.

# 18 Landmark House The Broadway, Loughton, IG10 2FA



- Viewings By Booking
- Two Double Bedroom's
- Elegantly Designed Three-Piece Bathroom Suite
- Plenty Of Ample Storage
- One Allocated Parking Space
- Available 23/07/2026
- Remarkably Spacious Entrance Hall
- Expansive Open-Plan Living And Kitchen Area
- Lift Access
- Private Balcony

## Entrance Hall

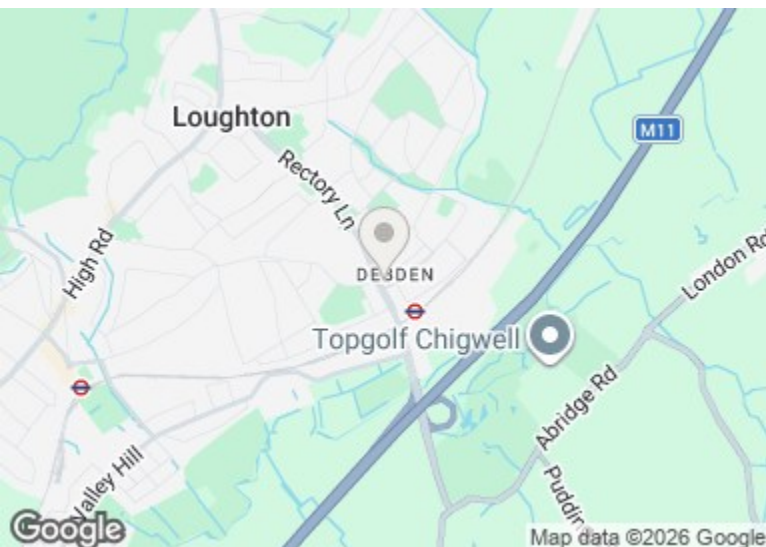
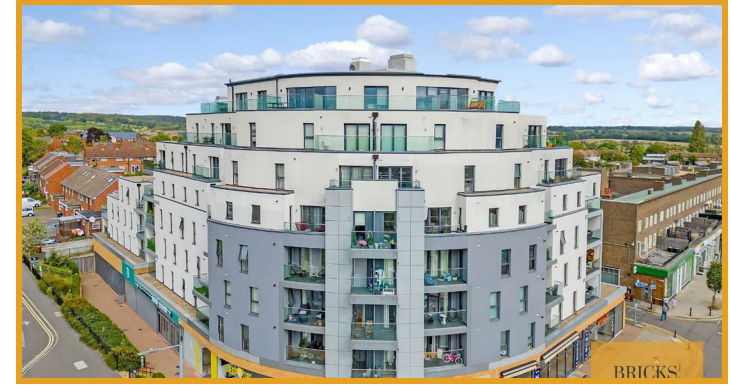
Lounge/Kitchen/Diner  
11'5" x 15'10" (3.5 x 4.84)

Main Bedroom  
9'6" x 13'2" (2.90 x 4.03)

Bedroom Two  
8'7" x 13'2" (2.64 x 4.02)

Family Bathroom  
5'6" x 6'11" (1.70 x 2.12)

Balcony



## Directions

# BRICKS.

ESTATE AGENTS