



17 Seawell Road
Corby, NN17 3LW



Simpson West

NO CHAIN!! Being situated within this much sought after cul de sac which can be found within the highly popular Weldon Park is this rarely available detached family home which must be seen if it is to be appreciated. Features and accommodation include a reception hall, cloakroom/WC, living room and a superb, excellent sized fitted kitchen/dining room with a walk in storage facility, integrated appliances and there is also a separate utility room.

The first floor provides FOUR bedrooms with the master enjoying en-suite facilities and there is also a separate family bathroom. Outside, there is an established good sized frontage which provides OFF ROAD PARKING for TWO VEHICLES which leads to the GARAGE. The rear garden is a particular feature as it is an excellent size and is predominantly laid to lawn and also enjoys an extended patio which is an ideal setting for social occasions.

Simpson West strongly recommend an early visit to this home to appreciate its many benefits!

Energy Rating B. Council Tax Band D.

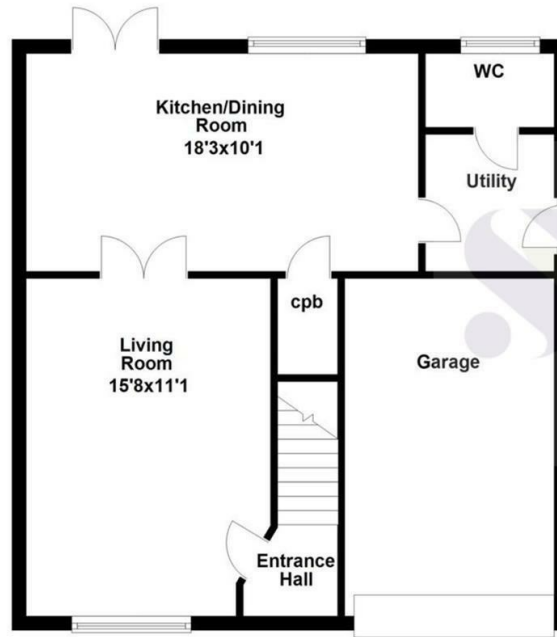


Offers Over £328,000



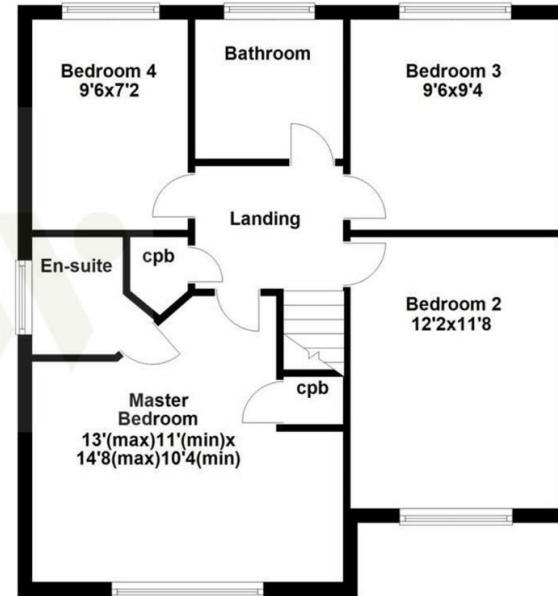
Ground Floor

Approx. 59.6 sq. metres (641.1 sq. feet)



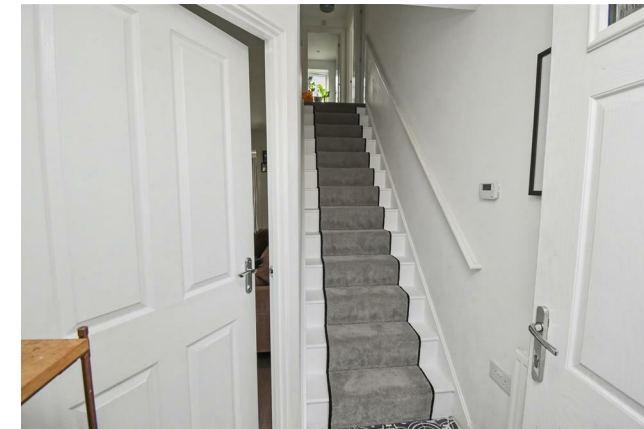
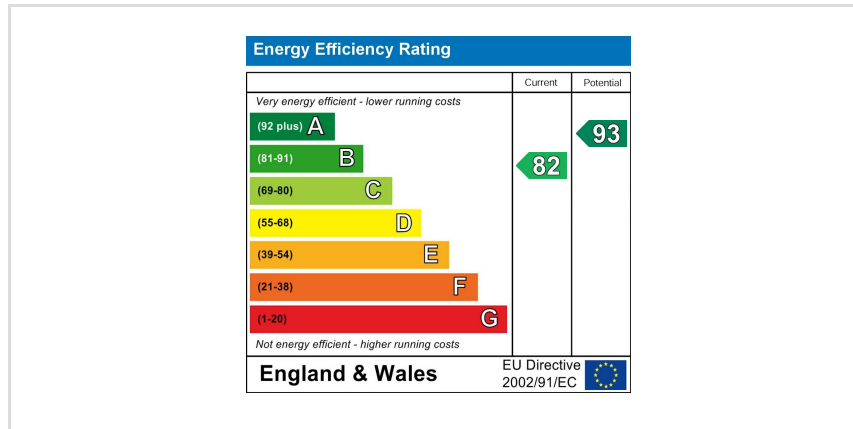
First Floor

Approx. 56.4 sq. metres (606.7 sq. feet)



Total area: approx. 115.9 sq. metres (1247.8 sq. feet)

Floor plan not to scale - for guidance purposes only.
Plan produced using PlanUp.



When you buy with Simpson West, you know **you'll be in safe hands**. From the moment you walk through our doors, we'll make you **feel truly welcome**. Our sales consultants and financial advisors will take you through **every step of the process**, offering **free expert advice** along the way, from help choosing the right mortgage and insurance through to finding your conveyancer. And if you need help selling your home too, **with over 20 years of local experience, you can trust us to get you moving**.



**Simpson
West**

Making Every
Journey Personal



01536 202007

info@simpsonwest.co.uk

<https://www.simpsonwest.co.uk/>

64 Corporation Street, Corby, Northants, NN17 1NH