

# SNELLERS

ESTATE AGENTS



**London Road, TW7**

**£434,950**

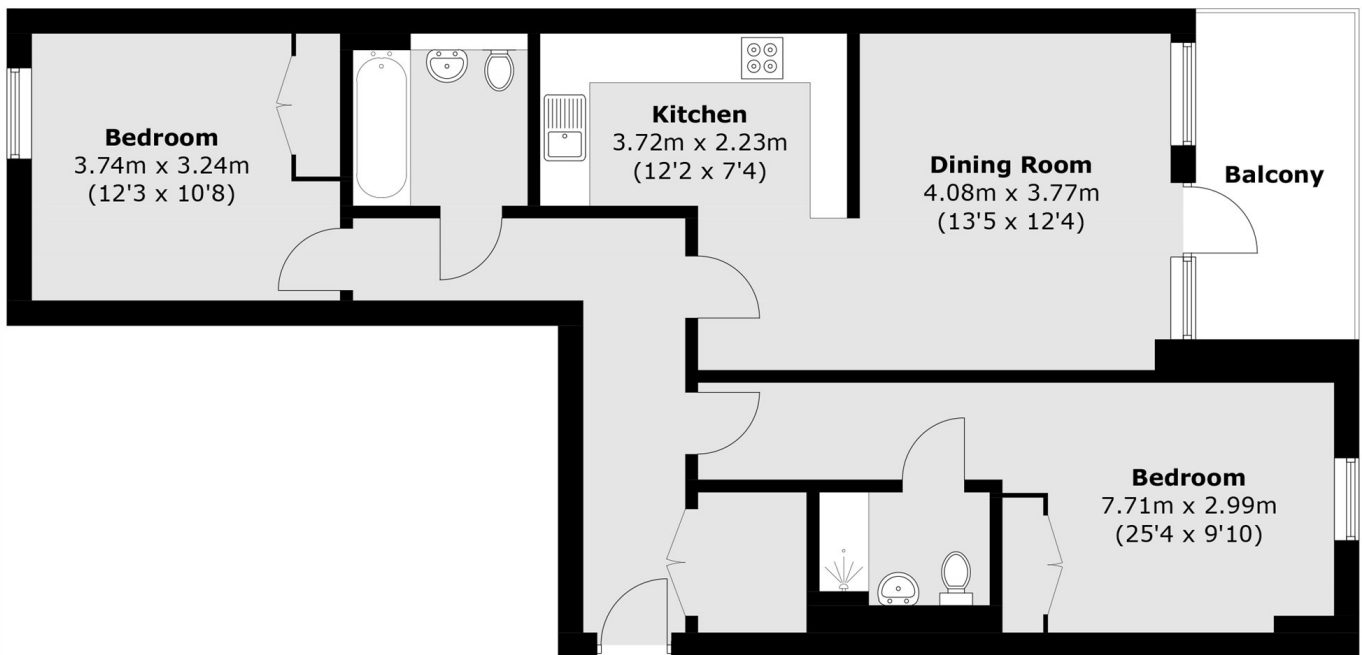
This well-presented two bedroom apartment offers bright and well-proportioned accommodation, ideal for comfortable modern living. The layout is practical and well balanced, with good natural light throughout.

Situated on Silchester in Isleworth, the property is conveniently located close to local shops, schools and green spaces. Isleworth station is within easy reach, providing direct links into London Waterloo, along with access to nearby Richmond, St Margarets and Twickenham.

- Two Bedrooms • Two Bathrooms • Private Balcony •
- Bright Interiors • Great Location •

# SNELLERS

ESTATE AGENTS



## Second Floor

Total area (approx.): 79.6 sq. m (856.8 sq. ft)  
Balcony: 7.6 sq. m (81.8 sq. ft)

Snellers St. Margarets Sales  
36 Crown Road  
St Margarets  
TW1 3EH  
020 8892 8008  
stmargaretssales@snellers.co.uk

Energy Rating: B We aim to make our particulars both accurate and reliable. However they are not guaranteed; nor do they form part of an offer or contract. If you require clarification on any points then please contact us, especially if you're traveling some distance to view. Please note that appliances and heating systems have not been tested and therefore no warranties can be given as to their good working order