



Beechcroft Crescent, Streetly, Sutton Coldfield

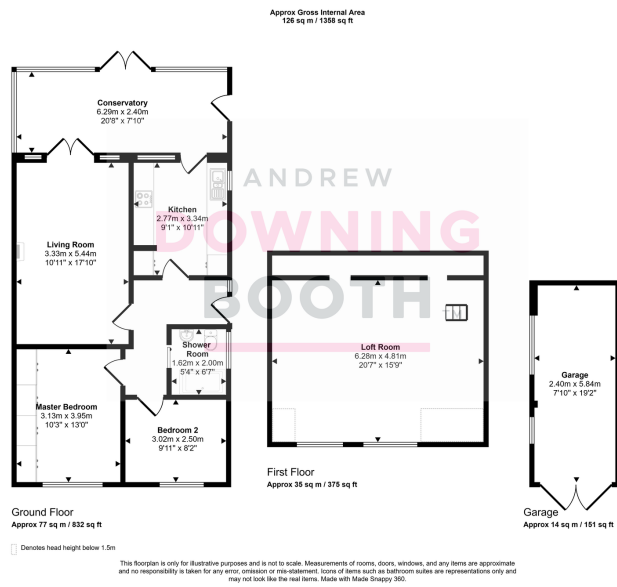
Offers Over £325,000

2 1 1



Life's a 'Beech' if you make this stunning bungalow on Beechcroft Crescent yours! Finished to an immaculate standard throughout, with plentiful parking for up to 6 vehicles, and boasting a private, low maintenance, south-west facing garden, this property is the perfect home for anyone looking not to compromise. Sitting in a quiet location with great access, this semi-detached bungalow provides excellent transport links to Aldridge, Sutton Coldfield and beyond. The accommodation comprises an entrance hall, large living room, modern kitchen and full width conservatory to the rear. There are also two double bedrooms and a stunning contemporary shower room. Outside is equally as impressive with a large block paved frontage providing plenty of off street parking, whilst there is a gated tarmacadam driveway beneath the carport which leads on in turn to a garage. A gate provides access to the rear garden which boasts patios, an artificial lawn and plenty of privacy, as well as being a real sun trap, with a south west facing orientation. Don't miss out on this one, as it is a real box ticker, so book in an early viewing!





- Two Double Bedroom Semi-Detached Bungalow
- Large Living Room, Conservatory, Modern Kitchen & Stunning Shower Room
- Large Driveway & Carport Providing Ample Parking For Up To 6 Cars
- Immaculately Appointed Throughout
- Garage & South-West Facing, Private Rear Garden
- Convenient Yet Quiet Location



| Energy Efficiency Rating | | |
|---|-------------------------|-----------|
| | Current | Potential |
| Very energy efficient - lower running costs | | |
| (92 plus) A | | |
| (81-91) B | | 85 |
| (69-80) C | | |
| (55-68) D | 56 | |
| (39-54) E | | |
| (21-38) F | | |
| (1-20) G | | |
| Not energy efficient - higher running costs | | |
| England & Wales | EU Directive 2002/91/EC | |