



Dormans Park Road
East Grinstead

Connells

Property Description

GUIDE PRICE: £350,000 - £375,000

Nestled along a sought-after road, this charming two-bedroom Edwardian cottage is brimming with character and warmth, offering a perfect blend of period features and comfortable living.

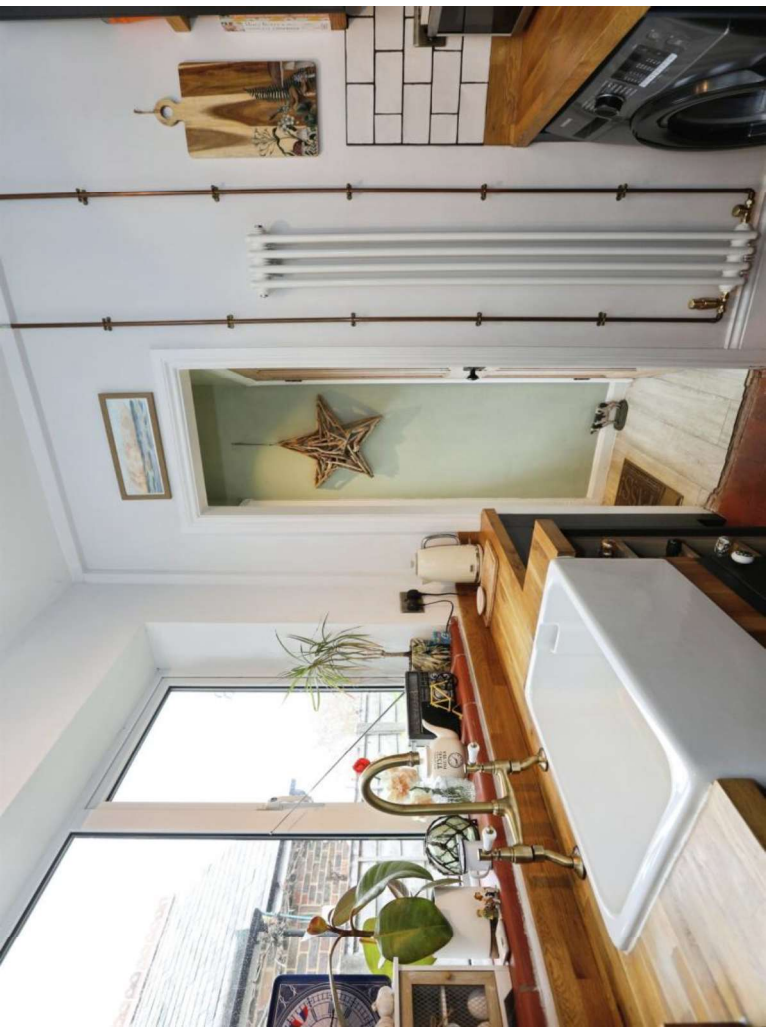
From the moment you step inside, the property welcomes you with a cosy and inviting atmosphere. The living spaces are rich in charm and feature an open fireplace and log burner. A homely layout that perfectly suits both relaxing evenings and entertaining guests. The kitchen offers a practical yet characterful space, thoughtfully designed to complement the cottage's traditional feel.

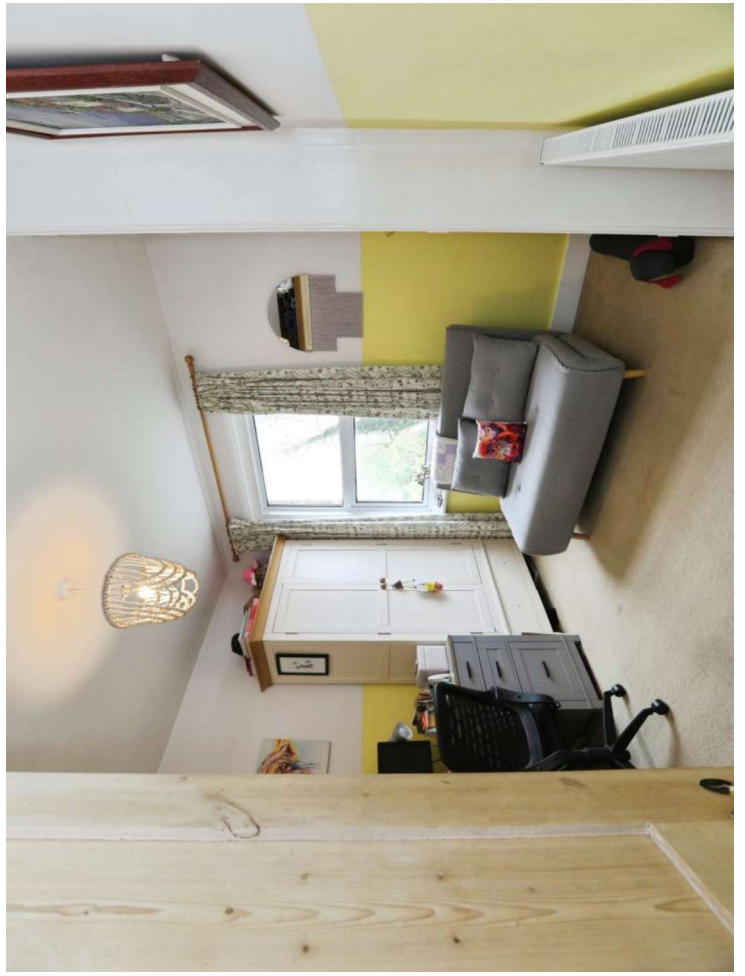
Upstairs, two well-proportioned bedrooms provide comfortable accommodation, each enjoying a pleasant outlook and retaining the home's unique charm. The bathroom is well-appointed and in keeping with the style of the property.

Externally, the cottage continues to impress with a delightful garden space-ideal for enjoying warmer months, whether that's morning coffee or evening drinks. The setting offers a peaceful lifestyle while still being conveniently located for local amenities and transport links into London.

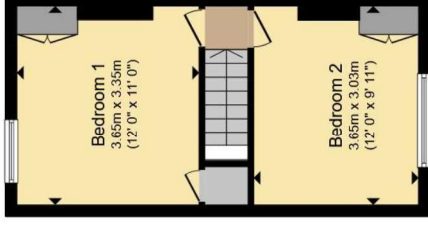
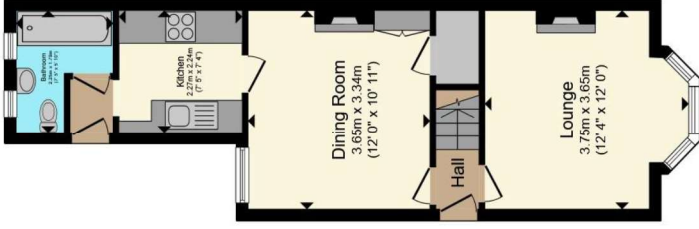
This is a wonderful opportunity to acquire a truly characterful home, ideal for first-time buyers, downsizers, or those looking for a charming retreat.











Total floor area 64.6 m² (695 sq.ft.) approx

This floor plan is for illustrative purposes only. It is not drawn to scale. Any measurements, floor areas (including any total floor area), openings and orientation are approximate. No details are guaranteed, they cannot be relied upon for any purpose and they do not form part of any agreement. No liability is taken for any error, omission or misstatement. A party must rely upon its own inspection(s). Powered by www.propertybox.io



To view this property please contact Connells on

T 01342 325 911
E eastgrinstead@connells.co.uk

90 London Road
EAST GRINSTEAD RH19 1EP

EPC Rating: D Council Tax
Band: C

Tenure: Freehold

view this property online [connells.co.uk/Property/EGR405634](https://www.connells.co.uk/Property/EGR405634)



1. MONEY LAUNDERING REGULATIONS Intending purchasers will be asked to produce identification documentation at a later stage and we would ask for your co-operation in order that there will be no delay in agreeing the sale. 2. These particulars do not constitute part or all of an offer or contract. 3. The measurements indicated are supplied for guidance only and as such must be considered incorrect. Potential buyers are advised to recheck measurements before committing to any expense. 4. We have not tested any apparatus, equipment, fittings or services and it is in the buyers interest to check the working condition of any appliances.

Connells Residential is registered in England and Wales under company number 1489613. Registered Office is Cumbria House, 16-20 Hockliffe Street, Leighton Buzzard, Bedfordshire, LU7 1GN. VAT Registration Number is 500 2481 05.

See all our properties at www.connells.co.uk | www.rightmove.co.uk | www.zoopla.co.uk

Property Ref: EGR405634 - 0005