



## Capital Building, Embassy Gardens

**Asking Price £925,000**

Welcome to this stunning modern apartment located in the prestigious Capital Building at Embassy Gardens. Spanning an impressive 886 square feet, this property offers a perfect blend of contemporary design and comfortable living.

Upon entering, you are greeted by a spacious reception room that provides an inviting atmosphere. The apartment features two well-appointed bedrooms and two stylish bathrooms (one en-suite). The Capital Building is situated in a vibrant area, known for its excellent amenities and proximity to transport links, making it an ideal choice for those seeking both comfort and convenience in the heart of London.

Approximately 984 years remaining on lease  
Ground rent amount: Ask agent  
Ground rent review period: Ask agent  
Service charge amount: approx. Ask agent  
Service charge review period: N/A  
Council tax band: G Wandsworth

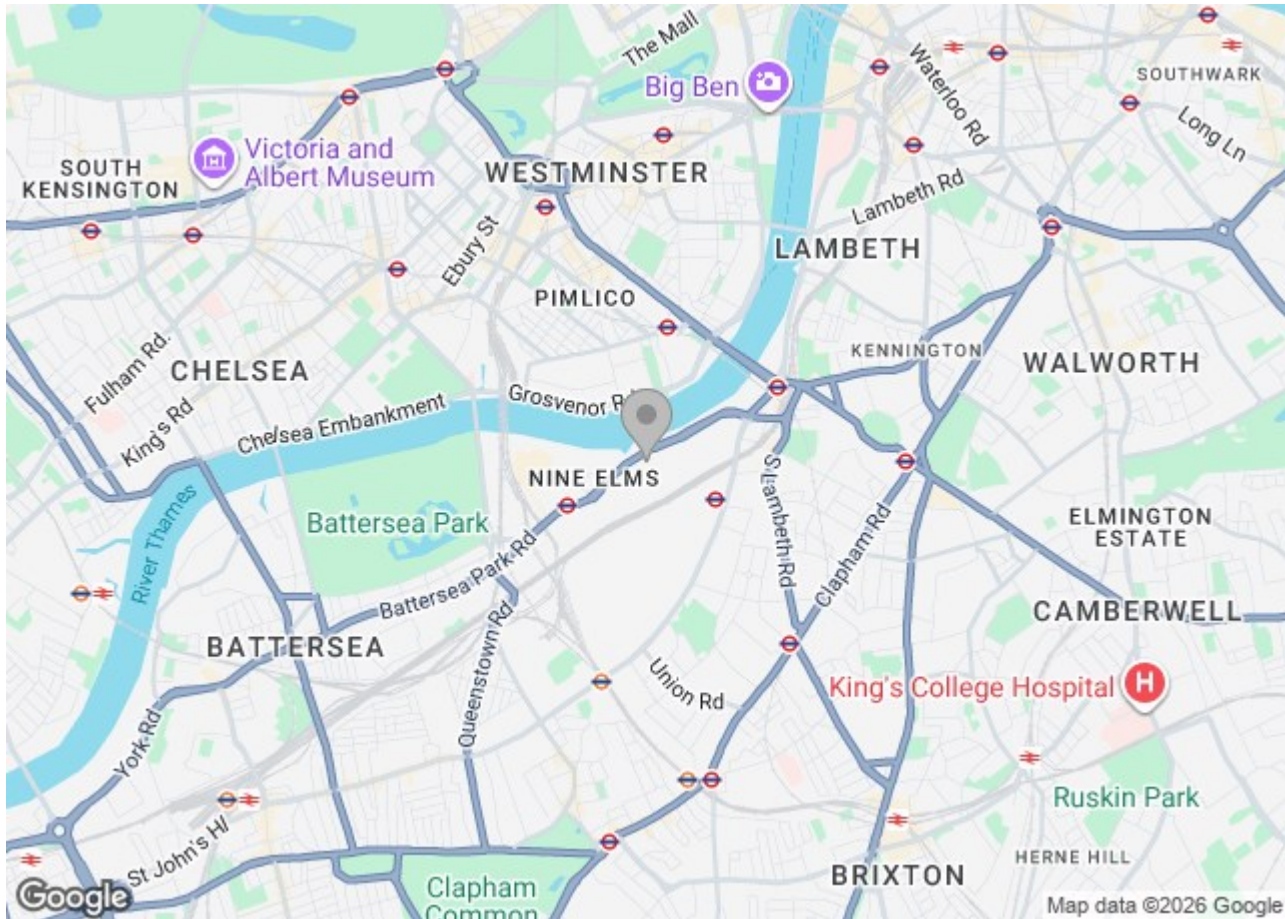
Electricity supply – Mains | Heating – Communal | Water supply – Mains | Sewerage – Mains | Internet: FTTP | Lift Access  
| Cladding: EWS1 Certificate available

To check broadband and mobile phone coverage please visit Ofcom.  
To check planning permission please visit Wandsworth Council Website, Planning & Building Control

# 8 New Union Square London



- Two bedrooms
- Residents gymnasium & swimming pool
- Two bathrooms
- Access to residents sky pool
- 24 hour concierge
- Private balcony





BATTERSEA & NINE ELMS  
ESTATES



BATTERSEA & NINE ELMS  
ESTATES



BATTERSEA & NINE ELMS  
ESTATES

Capital Building,  
New Union Square, SW11  
Approximate Gross Internal Area  
82.3 sq m / 886 sq ft

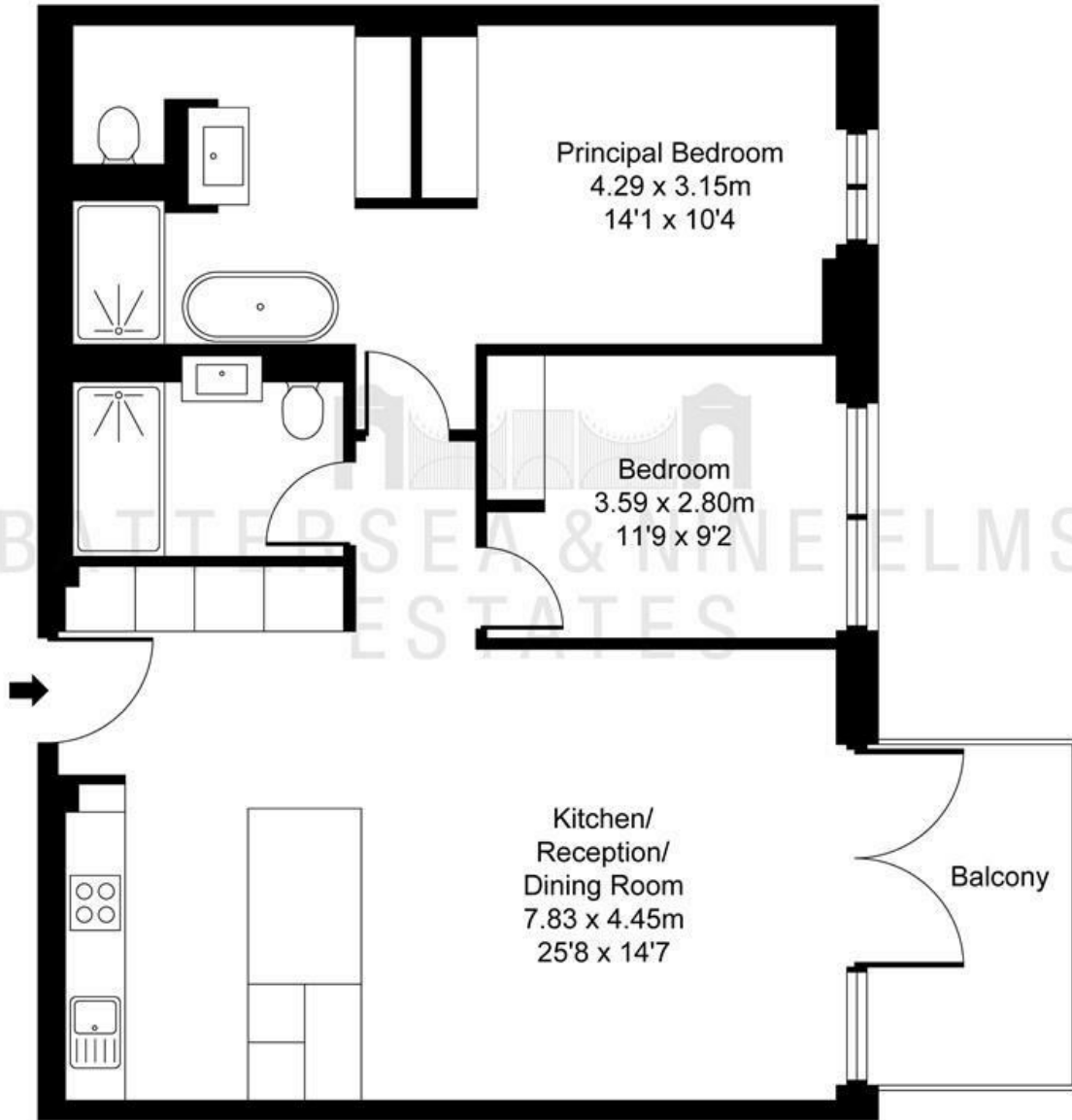


ILLUSTRATION FOR IDENTIFICATION PURPOSES ONLY  
ALL MEASUREMENTS AND AREA FIGURES SUPPLIED BY OTHERS. ACCURACY IS NOT GUARANTEED.  
THIS PLAN MUST NOT BE REPRODUCED BY ANY OTHER PERSON WITHOUT PERMISSION

These particulars, whilst believed to be accurate are set out as a general outline only for guidance and do not constitute any part of an offer or contract. Intending purchasers should not rely on them as statements of representation of fact, but must satisfy themselves by inspection or otherwise as to their accuracy. No person in this firm's employment has the authority to make or give any representation or warranty in respect of the property.

