

**52 Barkers Lane, Wythall**

Birmingham

Offers Over **£675,000**

# 52 Barkers Lane

Wythall, Birmingham

This beautifully presented detached dormer bungalow in Wythall offers spacious, flexible living with a self-contained annexe, ideal for multi-generational families or guest accommodation.

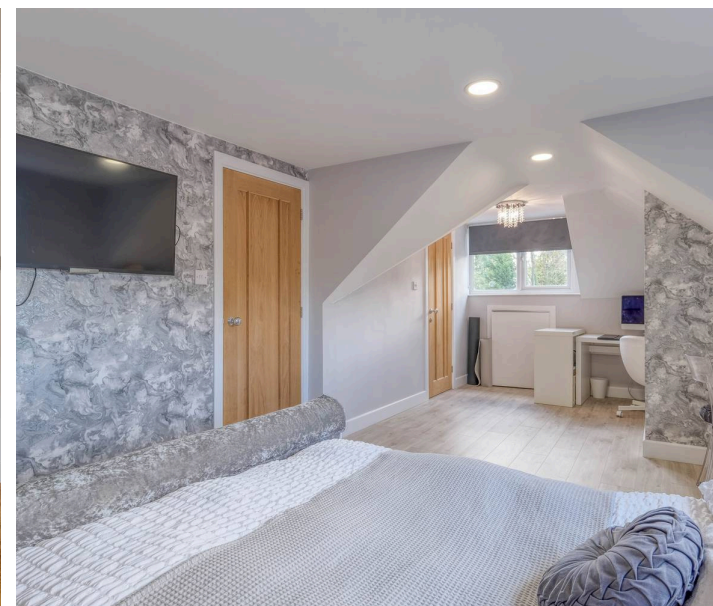
Council Tax band: F

Tenure: Freehold

EPC Energy Efficiency Rating: D

EPC Environmental Impact Rating:

- Self-Contained One-Bedroom Annexe
- Spacious Detached Dormer Bungalow
- Generous Principal Suite
- Two Ground Floor Double Bedrooms
- Two Reception Areas
- Modern Kitchen
- Stylish Bathrooms
- South-Facing Rear Garden
- Ample Parking & Garage
- Prime Village Location





You can include any text here. The text can be modified upon generating your brochure.



# Barkers Lane, Wythall

## Ground Floor



## First Floor



Total Area Approx  
178.3 Sq M  
1919.20 Sq Ft

For illustrative purposes only. Decorative finishes, fixtures & fittings do not represent the current state of the property. Measurements are approximate & not to scale. Floor Plans made using RoomSketcher.



## Arden Estates

Arden Estates Solihull, 450 Stratford Road, Solihull – B90 4AQ

0121 745 5888 • [solihull@ardenestates.co.uk](mailto:solihull@ardenestates.co.uk) •