



Connells

Gladstone Street
Peterborough



Property Description

This charming three-bedroom mid-terraced home offers a well-balanced layout ideal for modern family living. The ground floor features a welcoming lounge at the front, perfect for relaxing, leading into a separate dining room that provides a great space for entertaining. At the rear, the kitchen offers a practical and functional design with direct access to the garden, complemented by a convenient downstairs bathroom. Upstairs, the property boasts three bedrooms, including a generous main bedroom and two additional rooms suitable for children, guests, or a home office. The home combines comfort and practicality, making it an excellent choice for first-time buyers or growing families.

Lounge

Door to front, radiator, carpet, coving, dado rail.

Hall

Stairs to first floor.

Dining Room

Window to rear, radiator and storage cupboard.

Kitchen

Window to side, tiled flooring, radiator, space for appliances, high and low level storage with worktops over, stainless sink/drain, wall mounted boiler and radiator.

Bathroom

Bath, WC, wash hand basin, window to side, tiled walls, radiator and hand rail.

First Floor

Bedroom One

Window to front, radiator and storage.

Bedroom Two

Window to rear and radiator.

Bedroom Three

Window to rear and radiator.

Outside

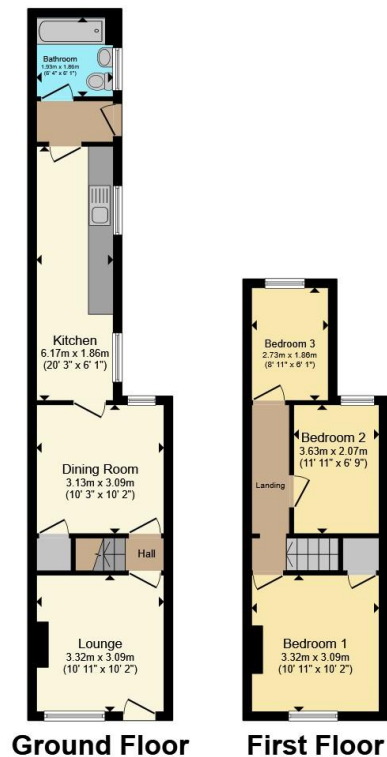
Rear Garden

Patio slabs, storage room and enclosed.

Front

Dwarf brick wall.





Total floor area 68.8 m² (741 sq.ft.) approx

This floor plan is for illustrative purposes only. It is not drawn to scale. Any measurements, floor areas (including any total floor area), openings and orientation are approximate. No details are guaranteed, they cannot be relied upon for any purpose and they do not form part of any agreement. No liability is taken for any error, omission or misstatement. A party must rely upon its own inspection(s). Powered by www.propertybox.io



To view this property please contact Connells on

T 01733 314 775
E peterborough@connells.co.uk

14 Cowgate
 PETERBOROUGH PE1 1NA

EPC Rating: D Council Tax Band: A

view this property online connells.co.uk/Property/PBO312481

Tenure: Freehold



1. MONEY LAUNDERING REGULATIONS Intending purchasers will be asked to produce identification documentation at a later stage and we would ask for your co-operation in order that there will be no delay in agreeing the sale. 2. These particulars do not constitute part or all of an offer or contract. 3. The measurements indicated are supplied for guidance only and as such must be considered incorrect. Potential buyers are advised to recheck measurements before committing to any expense. 4. We have not tested any apparatus, equipment, fixtures, fittings or services and it is in the buyers interest to check the working condition of any appliances.

Connells Residential is registered in England and Wales under company number 1489613, Registered Office is Cumbria House, 16-20 Hockliffe Street, Leighton Buzzard, Bedfordshire, LU7 1GN. VAT Registration Number is 500 2481 05.

See all our properties at www.connells.co.uk | www.rightmove.co.uk | www.zoopla.co.uk

Property Ref: PBO312481 - 0005