



Penthouse West, Grove Court, SW10



Penthouse West, SW10

£4,800,000 | Leasehold

2,243 Sq Ft | 208 Sq M

1 Bedroom (Formally 4). 2 Bathrooms. 2 Receptions.

Features

Penthouse

Large Roof Terrace

Resident Parking

Lift Access

Superbly Managed & Secure Building With Day Porter

Additional Information

Council Tax Band

H

EPC

C

Council

Kensington & Chelsea







The Property

This exceptional penthouse apartment offers a rare opportunity to acquire a remarkably light-filled and spacious home in the heart of central London. Positioned atop a distinguished building, the residence boasts expansive lateral accommodation and a magnificent private terrace stretching approximately 75 feet—perfectly framing panoramic views across the London skyline. The property previously comprised a well-configured four-bedroom layout (see floorplan) and could be effortlessly reconfigured to restore this arrangement, offering versatility to suit a range of lifestyle needs. This penthouse combines volume, light, and outdoor space with a central address—making it a truly special offering in London's prime residential market.

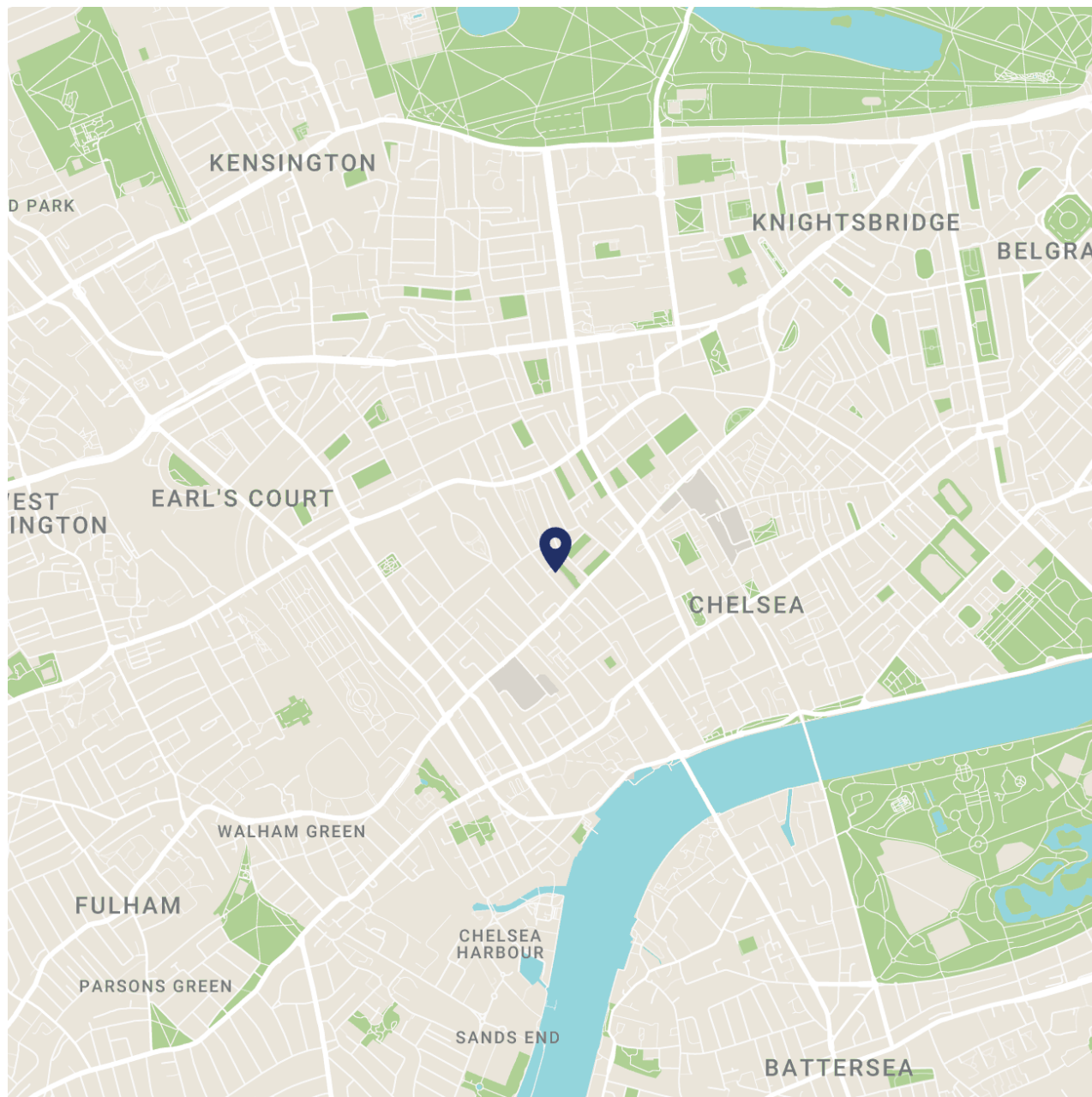




The Location

Grove Court is an established and well-maintained portered building, ideally positioned at the southern end of Drayton Gardens. The building benefits from a day porter, lift access, and a reputation for excellent management and security. Its prime location places it just moments from the vibrant amenities of Fulham Road, where a vast array of shops and restaurants can be found.

This desirable Chelsea address also offers close proximity to the cultural and lifestyle attractions of South Kensington, King's Road, and Gloucester Road, while still enjoying a quiet, residential atmosphere. The area is home to a number of prestigious schools, world-class galleries, and some of London's most beautiful garden squares—making it an enduringly popular location for discerning residents seeking both convenience and charm.



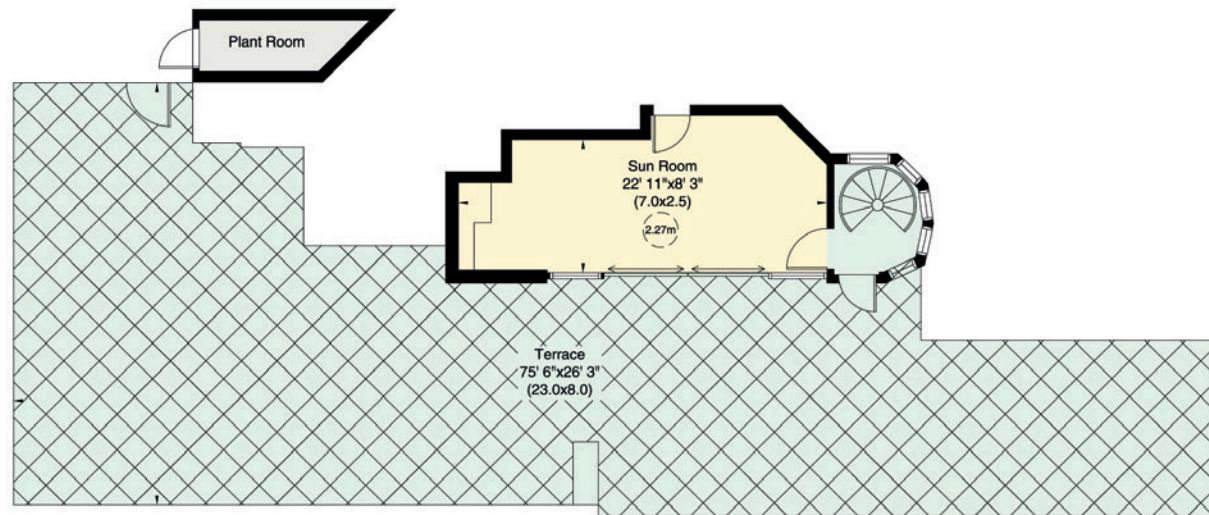
Penthouse West, Grove Court, Drayton Gardens, SW10

Approximate Gross Internal Area

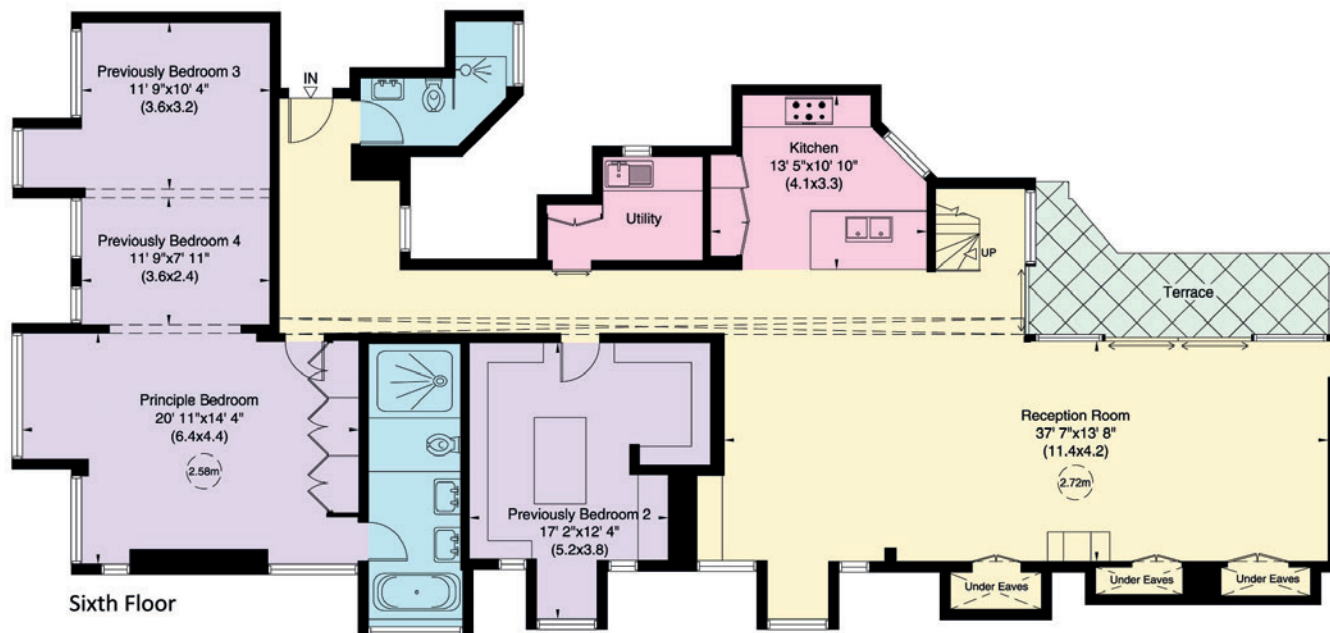
208 sq m (2243 sq ft) Including Plant Room and Under Eaves

202 sq m (2174 sq ft) Excluding Plant Room and Under Eaves

Not to Scale, for identification only



Seventh Floor



Sixth Floor



Selling Agent

Alex Stroud

+44 (0)7584 038000

alex@sflproperty.co.uk

Contact Us

+44 (0)20 7589 2970

sales@sflproperty.co.uk



CONTACT US

020 7589 2970

sales@sflproperty.co.uk

16A Adam & Eve Mews
Kensington
London
W8 6UJ