



Morecoombe Close, KT2

£325,000

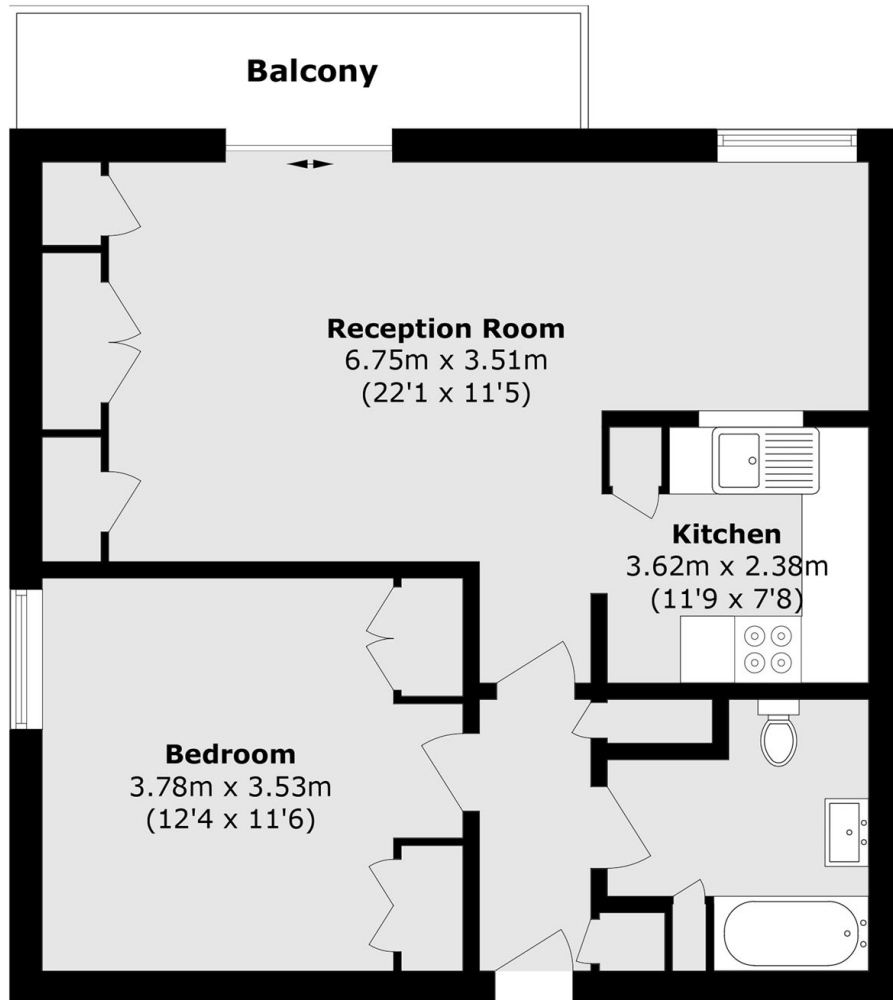
A generously sized, one bedroom, ground floor apartment, tucked away in a peaceful cul-de-sac and situated conveniently within walking distance of Norbiton Train Station. This charming flat features a separate kitchen with a open-hatch looking over the dining area, a spacious reception room leading to a private balcony, with direct access to the main communal gardens. There is also the added benefit of residents' parking. Offered with no onward chain, this property presents an ideal opportunity for a first-time buyer or a buy-to-let investment.

Occupying a highly desirable location, Morecoombe Close offers convenient access to Kingston Hospital, Norbiton Train Station, Richmond Park and the wide range of amenities within Kingston town centre, complemented by the presence of nearby local shops.

Features

- One Bedroom
- Purpose Built
- No Onward Chain
- Private Balcony
- Long Lease
- Residents Parking Available

Morecoombe Close, Kingston Upon Thames, KT2



Total area (approx.): 54.0 sq. m (581.3 sq. ft)

Balcony area (approx.): 5.3 sq. m (57.0 sq. ft)