

Flat - Purpose Built

FLAT 6,
WHARNCLIFFE
BEAN ROAD,
GREENHITHE,
DA9 9JD

£1,450

FEATURES

- 2bed/1bath
- Great location
- Council band C
- Unfurnished
- 1 allocated parking



BEXLEY HOMES

2 Bedroom Flat – Purpose Built located in Greenhithe

Bexley Homes are pleased to present this 2-bed apartment, ideal for professionals, couples, or small families. With excellent transport links and Bluewater nearby, this is a property not to be missed. The property comes fully unfurnished, fridge freezer and washing machine are not included.

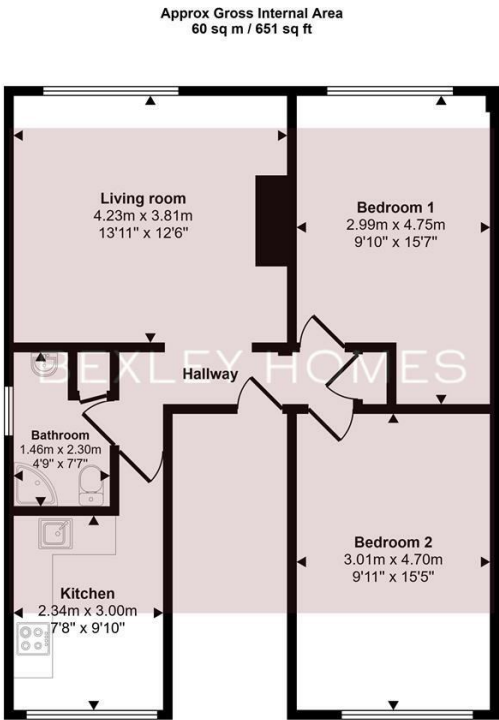
- Property Features:
- 2 Bedrooms, 1 Bathroom
 - Unfurnished – make it your own
 - Modern fitted kitchen with integrated dishwasher
 - Allocated parking space
 - Bright, spacious living area

Location:

Call us on
01322 948500

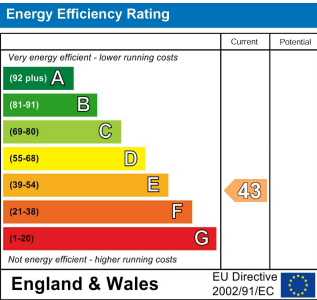
Belvedere@bexleyhomes.co.uk
www.bexleyhomes.co.uk

Council Tax Band
C



Floorplan

This floorplan is only for illustrative purposes and is not to scale. Measurements of rooms, doors, windows, and any items are approximate and no responsibility is taken for any error, omission or mis-statement. Icons of items such as bathroom suites are representations only and may not look like the real items. Made with Made Snappy 360.



Agents Note: Whilst every care has been taken to prepare these particulars, they are for guidance purposes only. All measurements are approximate and are for general guidance purposes only and whilst every care has been taken to ensure their accuracy, they should not be relied upon and potential buyers are advised to recheck the measurements.

