

Castles

Castles
for sale
020 8804 8000
www.castles.london

ASKING PRICE

£400,000

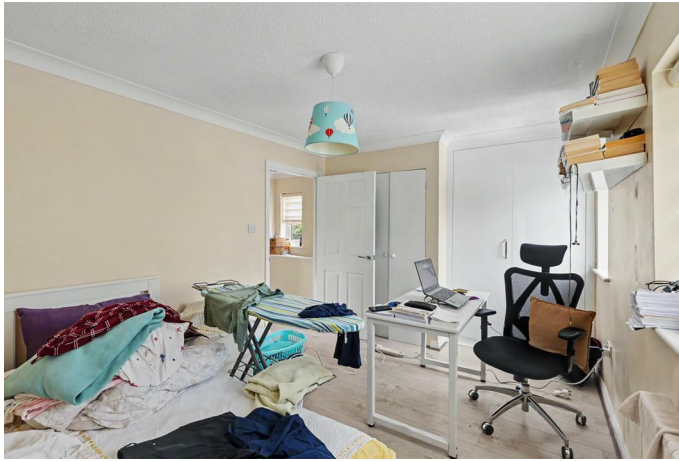
Bradley Road

Enfield, EN3 6ES Freehold

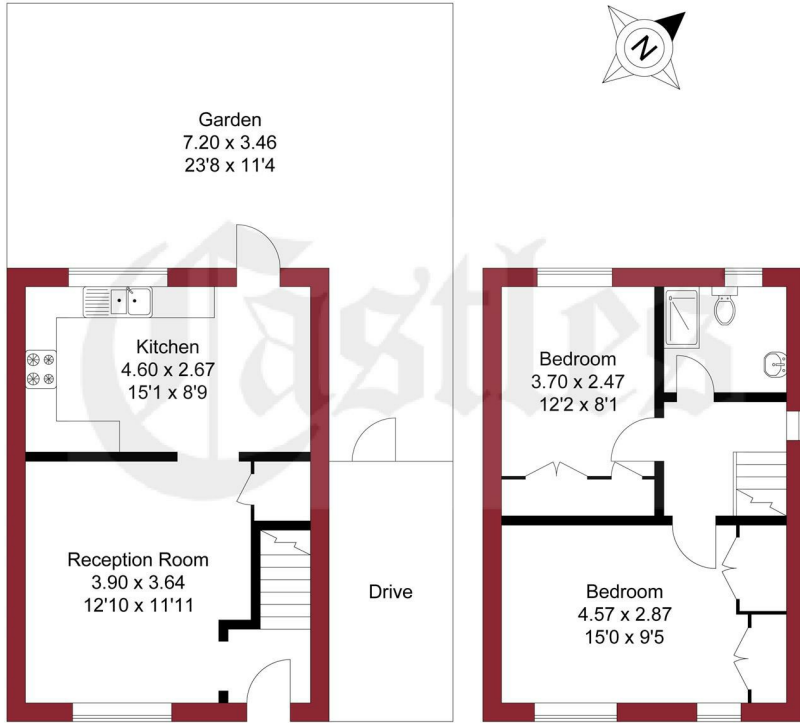
PROPERTY SUMMARY

A modern 2 bedroom semi-detached house ideally situated off Ordnance Road in Enfield Lock, just 0.1 miles from Enfield Lock BR station, providing direct links into London Liverpool Street and within close proximity to local schools and amenities. The property benefits from gas central heating, double glazing, an upstairs bathroom and off-street parking. Offered to the market on a chain-free basis, it presents an excellent opportunity for first-time buyers and investors alike.





APPROXIMATE GROSS INTERNAL AREA
61.82 sqm / 665.42 sqft

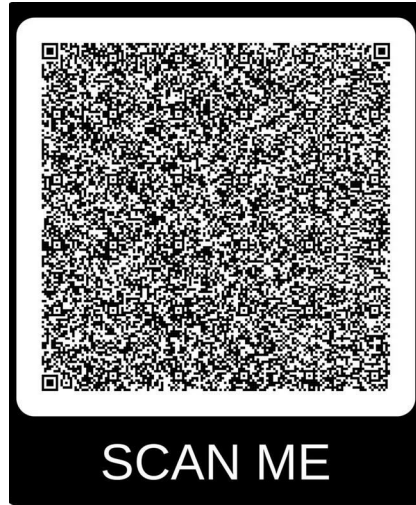


GROUND FLOOR

FIRST FLOOR

THIS PLAN IS FOR ILLUSTRATION ONLY AND MAY NOT BE REPRESENTATIVE OF THE PROPERTY

For a guide to the area please scan this code for more information



House

Freehold

Council: Enfield

Council Tax Band: C

Agents Note: Whilst every care has been taken to prepare these particulars, they are for guidance purposes only. All measurements are approximate and are for general guidance purposes only and whilst every care has been taken to ensure their accuracy, they should not be relied upon and potential buyers/tenants are advised to recheck the measurements



OFFICE ADDRESS

243 - 245 Hertford Road
Enfield
London
EN3 5JJ

OFFICE DETAILS

0208 804 8000
enfield@castles.london
<https://www.castles.london>

Energy Efficiency Rating		Current	Potential
Very energy efficient - lower running costs			
(92-100) A			
(81-91) B			
(69-80) C		74	79
(55-68) D			
(39-54) E			
(21-38) F			
(1-20) G			
Not energy efficient - higher running costs			
England & Wales		EU Directive 2002/91/EC	