



Park Lane Court, Park Lane, Wimborne, BH21

£310,000

This attractive two-bedroom split-level flat enjoys a superb town-centre position with shops and amenities moments away. Well arranged over two floors and complete with off-street parking.

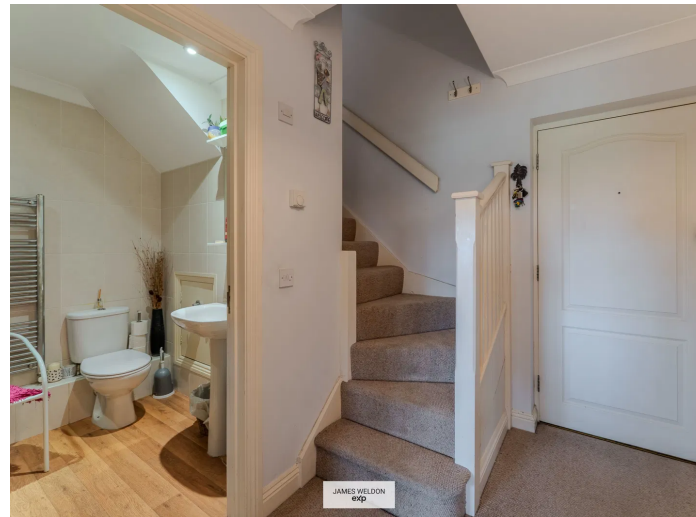
Bedrooms: 2

Bathrooms: 2

Receptions: 1

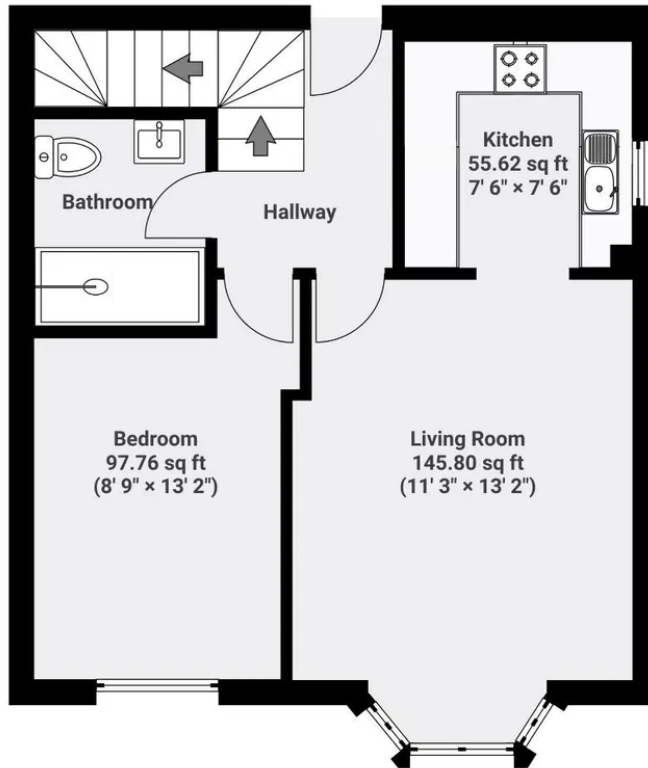
This attractive two-bedroom split-level flat enjoys a superb town-centre position with everything on the doorstep, while also benefiting from lovely open views over the green. Arranged over two levels, the property offers a bright and comfortable layout, including a spacious living area, a well-appointed kitchen, two bedrooms and both a main bathroom and an en-suite, providing excellent flexibility for modern living.

A real advantage here is the off-street parking, a rare and valuable feature in such a central location. The building is also equipped with a fire sprinkler system, offering added peace of mind. With its generous proportions, pleasant outlook and unbeatable convenience, this is an ideal home for buyers seeking comfort and practicality right in the heart of town.

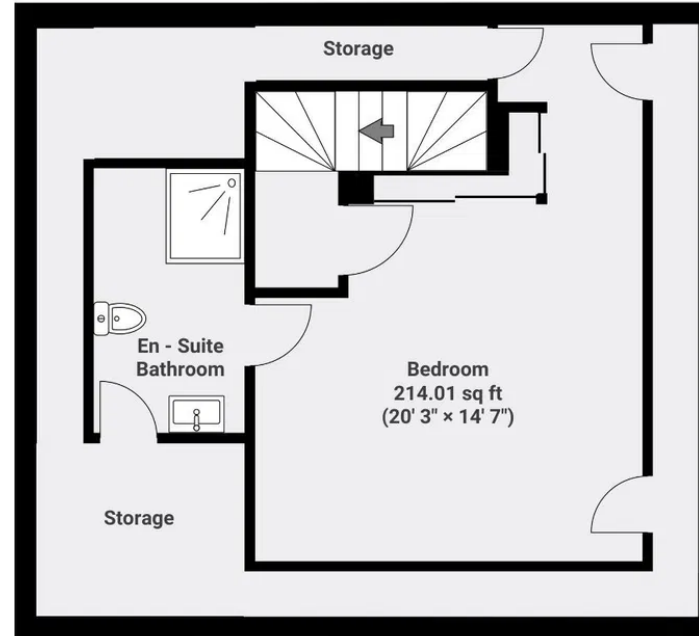




▼ 1st Floor



▼ 2nd Floor



The floorplan is for illustrative purposes only. All dimensions and measurements are approximate. Actual sizes may vary due to construction tolerances, finishing variations, and other factors. Prospective buyers or tenants are advised to verify all measurements independently before making any decisions. FJVISUALS

James Weldon

07507 140 969

james.weldon@exp.uk.com

<https://jamesweldon.exp.uk.com>