

Guide Price £225,000



## 4 Mill Cottages, Coldharbour, Uffculme, Cullompton, EX15 3EE

- Character accommodation with high ceilings
- Modern fitted kitchen
- Family bathroom
- Communal gardens
- Within walking distance of village amenities
- Spacious living/dining room
- Two generous double bedrooms
- Mains gas central heating
- Semi rural position close to countryside walks
- Easy M5 motorway access

**Sales, Lettings, Mortgages:**

Bampton 01398 332006 | Cullompton 01884 32100 | Tiverton 01884 253500

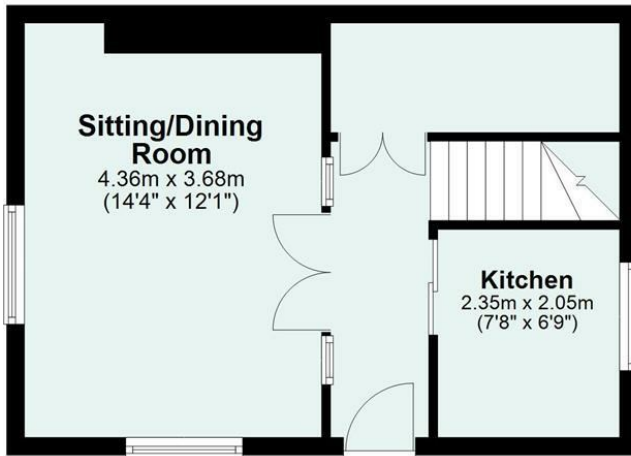


\*Watch the Seddons Video Tour\*

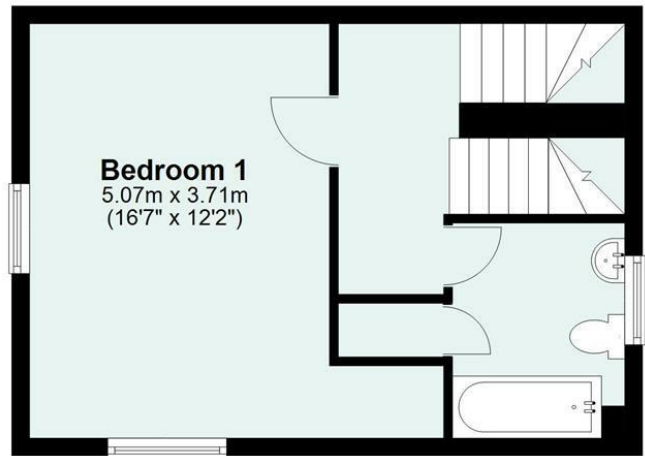
Offering high ceilings and character features, this stone built Grade II Listed mill cottage offers light and spacious accommodation in an idyllic position bordering open countryside. No onward chain.



Second Floor



Ground Floor



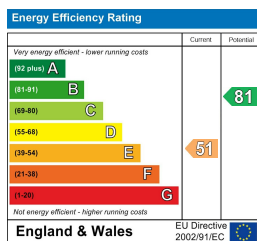
First Floor

Total area: approx. 99.7 sq. metres (1073.2 sq. feet)

## Council Tax Band

A

## EPC Rating



## Viewings

Viewings by arrangement only. Call 01884 32100 to make an appointment.

## Directions