



Kings Drive, KT7

£1,495,000

An immaculate family home of over 2,300 sq ft, beautifully renovated throughout to a high specification to create bright, stylish and versatile living. At the heart of the home is an immense open-plan kitchen/dining room with a wealth of natural light and featuring a large island, stylish kitchen, ample dining space and sliding doors opening directly onto the large landscaped rear garden.

Ideally situated near the popular Thames Ditton village with excellent local schools and with the River Thames on the doorstep. Thames Ditton is just 0.8 miles away and Surbiton station is just over a mile with its fast train links into Waterloo.

Features

- Immaculate Family Home
- Four Double Bedrooms
- Three Bathrooms
- Open-Plan Living
- Landscaped Garden
- Riverside Location



Kings Drive, KT7

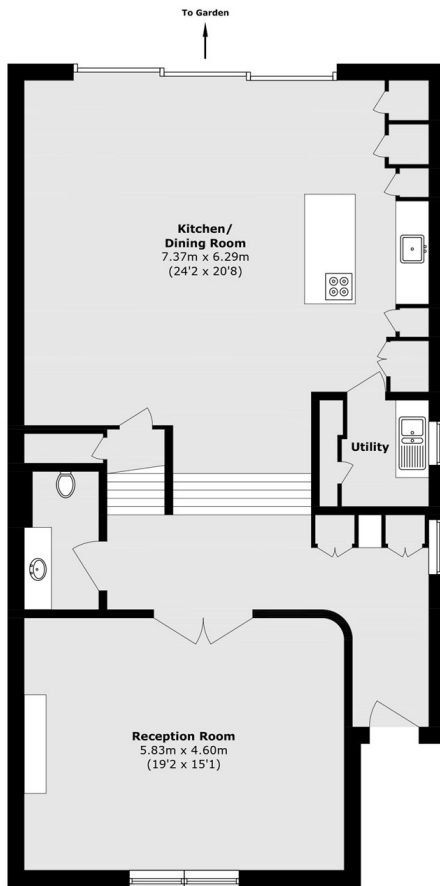
To the front of the property, a welcoming large reception room, leading into the open-plan kitchen/dining room. Further ground floor accommodation includes a handy utility space, a guest loo and a wine cellar.

The first floor is composed of three well appointed double bedrooms, including the principal suite with impressively high ceilings, a walk-in wardrobe and an en-suite. There is also a versatile office space for home working or studying and an additional family bathroom suite. On the second floor, there is a further bedroom with en-suite.

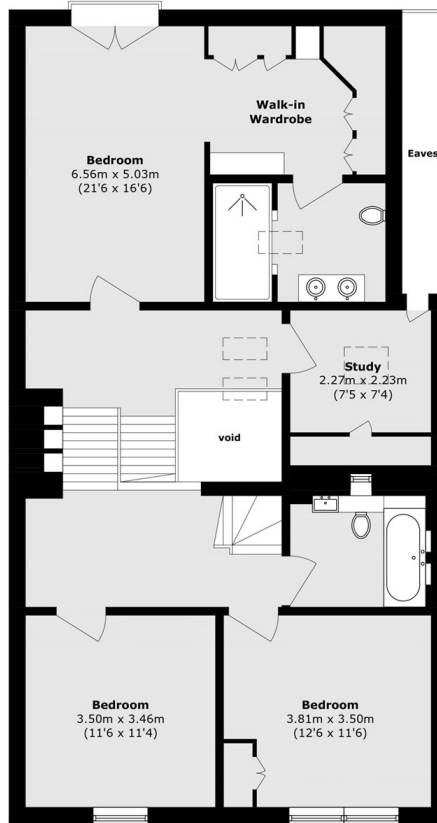
Outside the garden has been lovingly landscaped to create a seamless flow from inside to outside living. The garden comprises green space and patios for outdoor dining and entertaining. To the front of the property there is off-street parking.



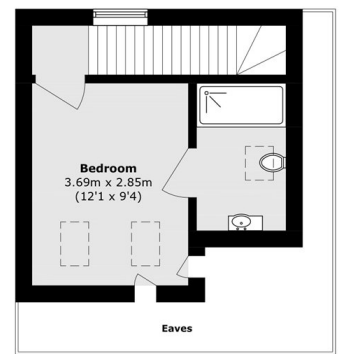
Kings Drive, Thames Ditton, KT7



Ground Floor



First Floor



Second Floor

Total area (approx.): 219.9 sq. m (2367.0 sq. ft)
(Excluding Eaves & Void)