

24 Wesley Avenue, Cradley, Halesowen B63 2PJ

Guide Price £230,000

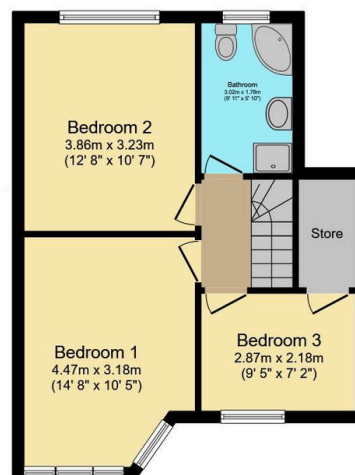
3 1 2



- Quote Reference JS0667
- Long Mature Rear Garden with Lovely Outlook
- Ideal For Young Families
- Attractive Kitchen with Oven and Hob
- Downstairs W.C.
- Attractive Extended 3 Bed Inner Townhouse
- Popular and Convenient Location
- 2 Versatile Reception Rooms
- 3 Good Sized Bedrooms
- Tarmac Driveway



Ground Floor
Floor area 54.9 sq.m. (591 sq.ft.)



First Floor
Floor area 43.2 sq.m. (465 sq.ft.)

Total floor area: 98.1 sq.m. (1,056 sq.ft.)

This floor plan is for illustrative purposes only. It is not drawn to scale. Any measurements, floor areas (including any total floor area), openings and orientations are approximate. No details are guaranteed, they cannot be relied upon for any purpose and do not form any part of any agreement. No liability is taken for any error, omission or misstatement. A party must rely upon its own inspection(s). Powered by www.Propertybox.io

This lovingly maintained, extended and deceptively spacious Traditional 3 Bedroom Intermediate Townhouse represents a wonderful opportunity for the first time buyer or young family and is available with NO UPWARD CHAIN. Conveniently positioned for local schools, Cradley Heath Town Centre and the railway station, the rewired and reroofed accommodation must be seen to be fully appreciated. Hit the "Request a Viewing" or "Email Agent" buttons to secure your viewing.