

Bagpark

Widecombe-in-the-Moor, Dartmoor, Devon





An historic estate within Dartmoor National Park, offering privacy, outstanding natural beauty, and a thoughtfully restored home with exceptional grounds and no public rights of way.

Available as a whole or in two lots

Ashburton 7.2 miles, Bovey Tracey 7.3 miles, Newton Abbot 11.6 miles, Exeter 26 miles (London Paddington from 2 hours 3 minutes)
(All distances and times are approximate)



Summary of accommodation

Reception hall | Drawing room | Dining room | TV/cinema room | Library | Kitchen/breakfast room | Study | Utility room | Stores | Rear glazed hall

Principal suite with en suite bathroom and dressing room | Guest suite with en suite bathroom | Three further bedrooms

Family bathroom | Landing/family room

Separate Wing: Second Kitchen | Two further bedrooms | Two shower rooms

Two Cottages: Entrance hall | Kitchen | Sitting/dining room | Two bedrooms | Shower room

Outbuildings: Oak-framed gymnasium and double garage | Agricultural barn with machinery/feed store | Garaging/workshops and cold room | Further stores

Landscaped gardens and parkland | Woodland and deer park | River and two large ponds | Kitchen garden and greenhouse | Orchard

In all about 41.58 acres

Lot 2: A further 12.64 acres available by separate negotiation.

Location

Bagpark is nestled within Dartmoor National Park, positioned in a peaceful valley of the East Webburn River, approximately a mile from the beautiful village of Widecombe-in-the-Moor with a shop, two pubs and the very popular Café on the Green. About 1 mile away from Bagpark is the renowned Rugglestone Inn, a charming country pub with superb views, pretty garden and excellent food.

The area offers direct access to Dartmoor's vast open moorland, with iconic tors such as Chinkwell Tor and Honeybag Tor nearby. Despite its rural setting, the property is within easy reach of amenities in Ashburton, including the exceptional Emilia's Italian, as well as Bovey Tracey, and benefits from excellent transport links via the A38 to Exeter and Plymouth. Mainline rail services are available from Exeter, Newton Abbot and Totnes providing direct connections to London Paddington.



Bagpark

Bagpark is a distinguished 19th century country estate, formerly known as Widecombe Manor, carefully restored to blend period charm with modern comfort. Approached via a long, private drive through mature parkland, the house is built from locally sourced granite and slate, featuring leaded casement windows that fill the interior with natural light while preserving its historic character.

The elegant drawing and dining rooms, both south-facing, offer wonderful views over the gardens and ponds. The kitchen/breakfast room is the heart of the home, designed around a triple AGA and a large island, with doors leading to a south-facing terrace. Additional living spaces include a TV/cinema room with a raised wood burner, a library, and a study. A secondary wing, accessed via a rear glazed hall, provides a private living area with a second kitchen, two bedrooms, and two shower rooms.

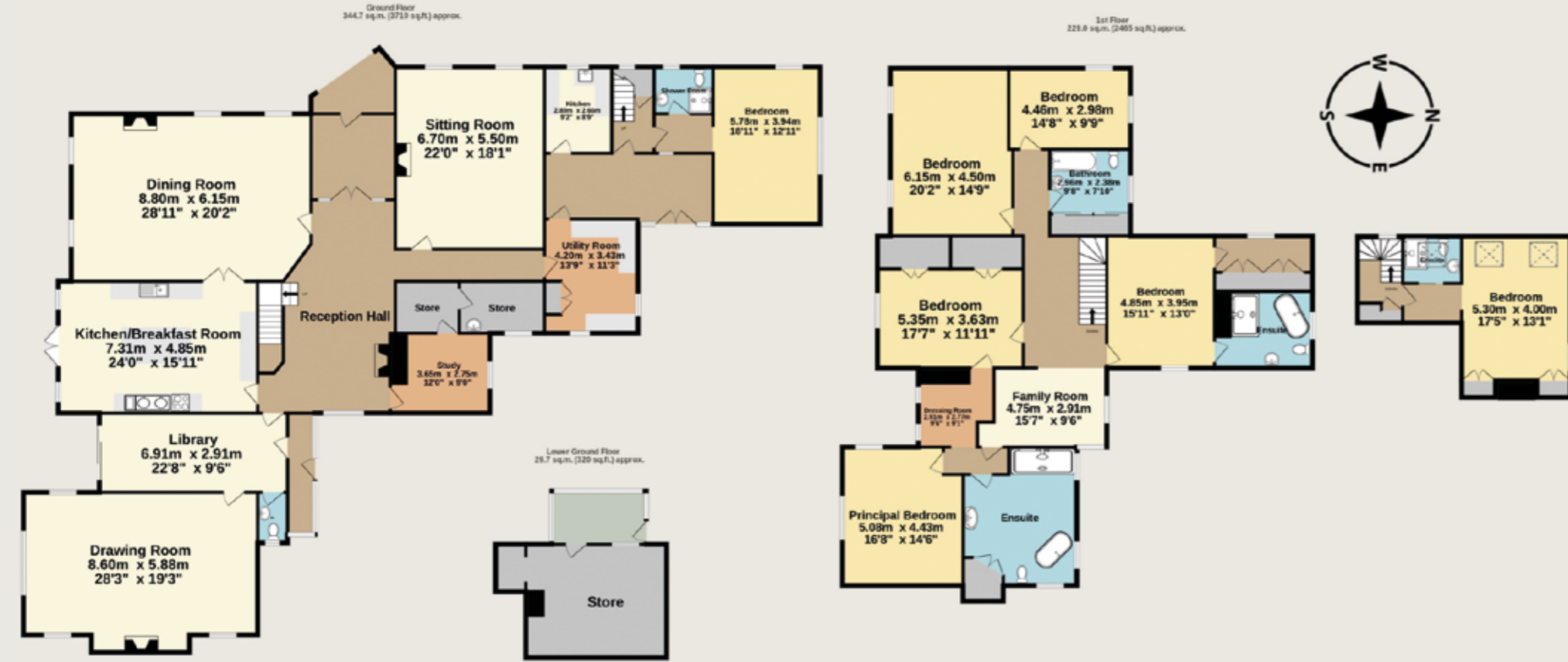
The first floor features a spacious landing leading to five double bedrooms, including the principal suite with an en suite bathroom, dressing room, and beautiful views over the estate. A guest suite with an en suite bathroom and three further bedrooms complete the accommodation.





Approximate Gross Internal Floor Area
603.4 sq.m. (6495 sq.ft.)

- Reception/Kitchen
- Bedroom
- Bathroom
- Circulation
- Utility/Storage/Outbuildings
- Outside



Additional Accommodation

Two well-appointed cottages are discreetly positioned near the main drive, each offering an entrance hall, kitchen, sitting/dining room, two bedrooms, and a shower room. These cottages provide ideal accommodation for guests or extended family.



This plan is for guidance only and must not be relied upon as a statement of fact. Attention is drawn to the Important Notice on the last page of the text of the Particulars.

Approximate Gross Internal Floor Area
409.2 sa.m. (4405 sq.ft.)



Gardens and Grounds

The 41.58 acres in Lot 1 encompass landscaped gardens, mature woodland, and a deer park, creating a serene and idyllic environment. The East Webburn River flows through the valley below, bordered by wooded banks and two large ponds that attract a variety of wildlife. The grounds also include an orchard with apple, plum, and damson trees, a kitchen garden with raised beds and an elegant greenhouse from Hampton Court Flower Show, as well as a chicken run with water and electricity. The water is supplied from the property's bore hole.

The woodland dates back to the 1860's and features hundreds of thousands of bluebells and over 1000 mature trees, including 120 feet Western Hemlocks, Western Red Cedars, Copper Beeches and Douglas Firs. The wildlife at Bagpark is nothing short of spectacular. There are 3 species of wild deer, 4 species of raptor and at a least 4 species of mustelids.



This plan is for guidance only and must not be relied upon as a statement of fact. Attention is drawn to the Important Notice on the last page of the text of the Particulars.

The river is a haven for wildlife, with 3 species of fish including the occasional salmon, eels and numerous small birds. The deer park, created in 1995, is home to herds of fallow and red deer, adding to the estate's unique charm. A historic site within the woodland, known as "The Judge and Jury Plantation," is believed to have been a medieval meeting place.

Lot 2 consists of a further 12.64 acres available by separate negotiation. Please refer to the boundary plan and contact the agents for more information.



Outbuildings

The estate offers an extensive range of outbuildings, including an agricultural barn with machinery storage, a cold room, and garaging/workshop space. An oak-framed outbuilding houses a double garage and a dedicated gymnasium, while additional stores provide ample storage.

Property Information

Services: Mains electricity. Private drainage. Private water supply from a borehole. Fibre Optic Broadband speed 750mbps in the main house, 350 mbps in the courtyard.

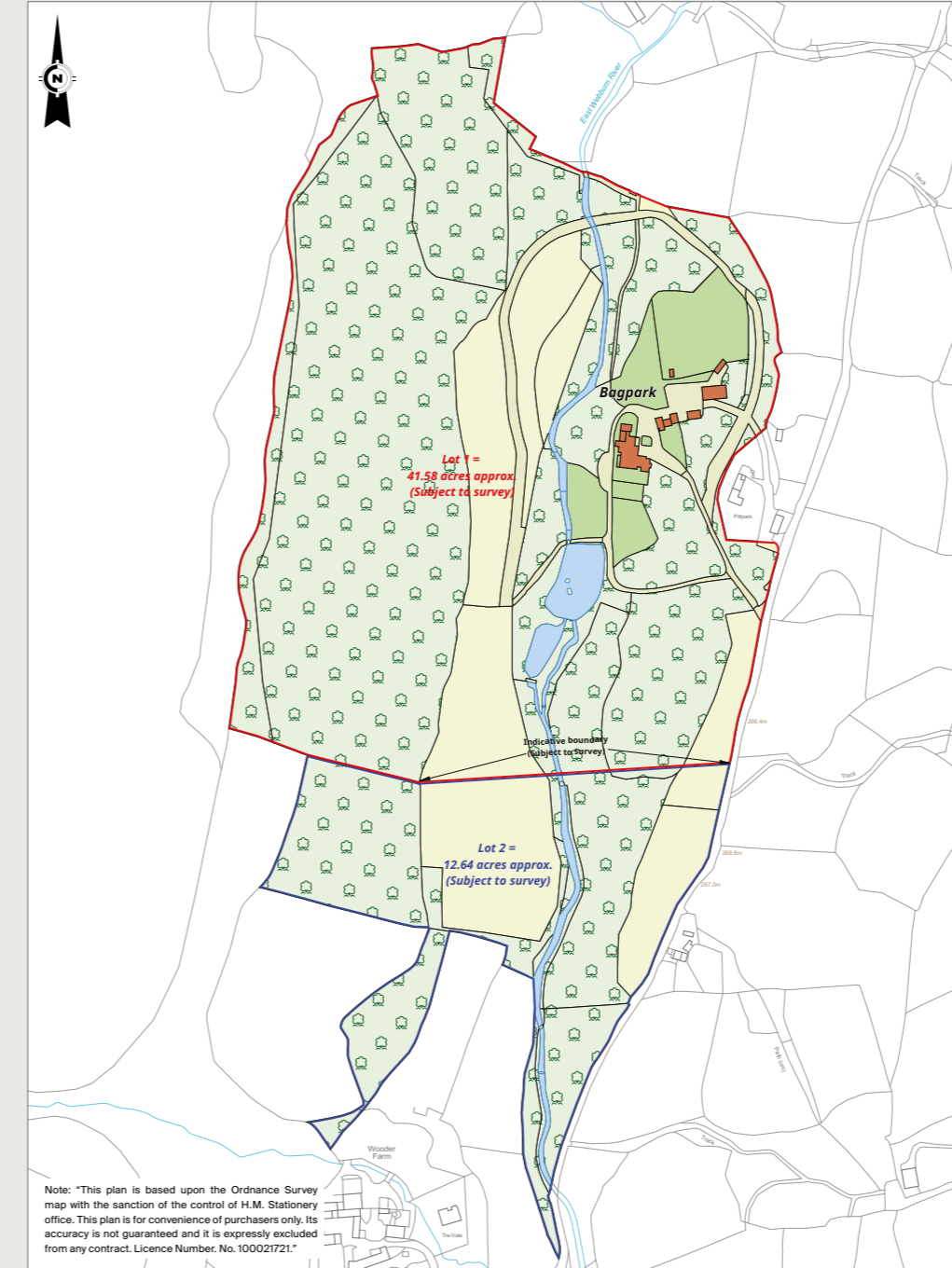
Tenure: Freehold

Local Authority: Dartmoor National Park Authority

Council Tax: Bagpark: Band H
Cottages: Band C

EPC Rating: F

Viewing: Viewing by prior appointment only with Knight Frank.





Knight Frank Exeter

19 Southernhay East

Exeter

EX1 1QD

Mark Proctor

01392 423111

mark.proctor@knightfrank.com

Knight Frank National Country Department

55 Baker Street

London

W1U 8AN

Hamish Humfrey

020 7861 1717

hamish.humfrey@knightfrank.com

knightfrank.co.uk

Important Notice: 1. Particulars: These particulars are not an offer or contract, nor part of one. You should not rely on statements given by Knight Frank in the particulars, by word of mouth or in writing ("information") as being factually accurate about the property, its condition or its value. Neither Knight Frank nor any joint agent has any authority to make any representations about the property, and accordingly any information given is entirely without responsibility on the part of Knight Frank. 2. Material Information: Please note that the material information is provided to Knight Frank by third parties and is provided here as a guide only. While Knight Frank has taken steps to verify this information, we advise you to confirm the details of any such material information prior to any offer being submitted. If we are informed of changes to this information by the seller or another third party, we will use reasonable endeavours to update this as soon as practical. 3. Photos, Videos etc: The photographs, property videos and virtual viewings etc. show only certain parts of the property as they appeared at the time they were taken. Areas, measurements and distances given are approximate only. 4. Regulations etc: Any reference to alterations to, or use of, any part of the property does not mean that any necessary planning, building regulations or other consent has been obtained. A buyer must find out by inspection or in other ways that these matters have been properly dealt with and that all information is correct. 5. Fixtures and fittings: A list of the fitted carpets, curtains, light fittings and other items fixed to the property which are included in the sale (or may be available by separate negotiation) will be provided by the Seller's Solicitors. 6. VAT: The VAT position relating to the property may change without notice. 7. To find out how we process Personal Data, please refer to our Group Privacy Statement and other notices at <https://www.knightfrank.com/legals/privacy-statement>.

Particulars dated April 2026. Photographs and videos dated March and May 2025. All information is correct at the time of going to print. Knight Frank is the trading name of Knight Frank LLP. Knight Frank LLP is a limited liability partnership registered in England and Wales with registered number OC305934. Our registered office is at 55 Baker Street, London W1U 8AN. We use the term 'partner' to refer to a member of Knight Frank LLP, or an employee or consultant. A list of members names of Knight Frank LLP may be inspected at our registered office. If you do not want us to contact you further about our services then please contact us by either calling 020 3544 0692, email to marketing.help@knightfrank.com or post to our UK Residential Marketing Manager at our registered office (above) providing your name and address. Brochure by wordperfectprint.com