



Lodges & Caravans

FOR SALE



ABI Ambleside Lodge, Plot 13 Maesmawr Farm Resort, Moat Lane, Caerwys, Powys, SY17 5SE

Price £75,000

- Spacious 40ft x 13ft lodge
- Modern 2018 build
- 250-year licence included
- Central heating & double glazing
- Access to hot-tub & BBQ
- Two cosy bedrooms
- Located at Maesmawr Farm
- Fully furnished interior
- Smart TV & Wi-Fi enabled
- Ideal for holiday rentals

Plot 13 Maesmawr Farm Resort, Moat Lane, Caersws

SY17 5SE

Nestled in the charming village of Caersws, this delightful lodge on Moat Lane offers a perfect blend of modern living and serene countryside charm. Built in 2018, this property boasts a contemporary design and is ideal for those seeking a comfortable retreat.

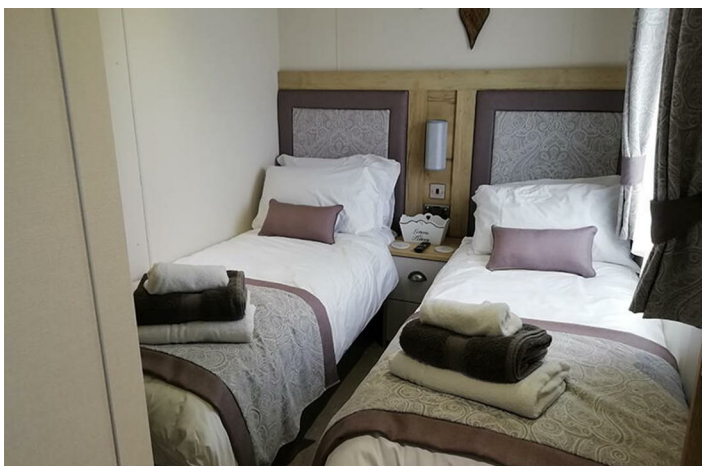
With two well-proportioned bedrooms, this lodge provides ample space for relaxation and rest. The two bathrooms add convenience, ensuring that both residents and guests can enjoy privacy and comfort. Spanning 520 square feet, the layout is thoughtfully designed to maximise space while maintaining a warm and inviting atmosphere.

The location is particularly appealing, as Caersws is known for its picturesque surroundings and friendly community. Residents can enjoy the tranquillity of rural life while still being within easy reach of local amenities and transport links.

This property is perfect for first-time buyers, small families, or those looking for a holiday home in a peaceful setting. With its modern features and prime location, this lodge is a wonderful opportunity for anyone looking to embrace a relaxed lifestyle in the heart of Wales. Don't miss the chance to make this lovely lodge your new home.



Council Tax Band: Exempt







Directions

Viewings

Viewings by arrangement only. Call 07500 874938 to make an appointment.

EPC Rating:

Energy Efficiency Rating		Current	Potential
Very energy efficient - lower running costs			
(92 plus) A			
(81-91) B			
(69-80) C			
(55-68) D			
(39-54) E			
(21-38) F			
(1-20) G			
Not energy efficient - higher running costs			
England & Wales		EU Directive 2002/91/EC 	