

LADBROKE SQUARE





Ladbroke Square, W11

A superbly presented ground floor conversion flat situated in the prestigious Ladbroke Square, W11. Offering approximately 725 square feet of well-proportioned living space, this property benefits from high ceilings and a large reception room, providing an airy and spacious environment. The flat features a private balcony and enjoys access to the exclusive Ladbroke Square Gardens, adding a unique outdoor element to this elegant home. Conveniently located just moments from Holland Park Underground station, this property offers excellent transport links alongside the charm and tranquility of one of Notting Hills most desirable garden squares. The accommodation comprises a generous bedroom, a modern bathroom, and a well-appointed reception area, ideal for both relaxing and entertaining. Offered as a Share of Freehold this flat represents a rare opportunity to acquire a stylish home in a sought-after location.

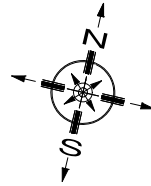
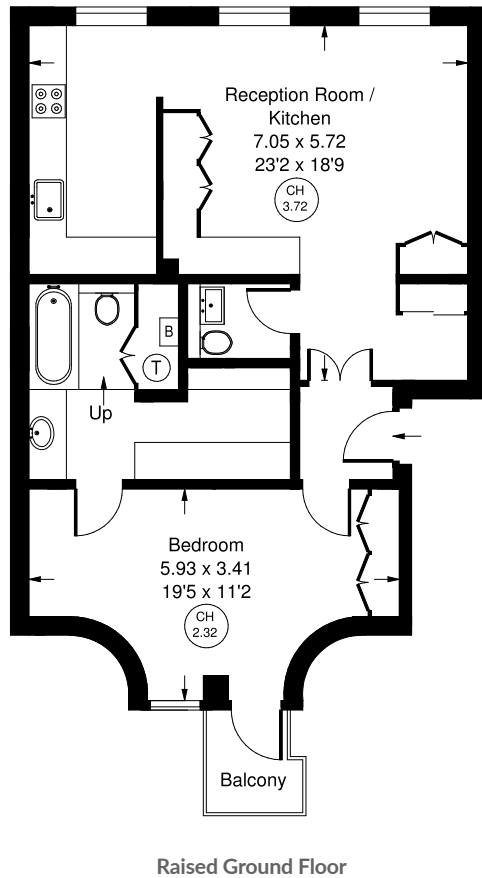








Approx. Gross Internal Area =66.3 sq m / 714 sq ft



Ladbroke Square, W11 - Share of Freehold Local Authority - Royal Borough of Kensington & Chelsea

- Two bedrooms
- Two bathrooms
- Ground floor flat
- High ceilings
- Balcony
- Access to Ladbroke Square Gardens
- Council Tax Band: G
- Remaining Lease: 977 years



Whilst every attempt has been made to ensure the accuracy of the floor plan, measurements are approximate and not to scale. No guarantee is given on the total square footage of the property quoted on the plan. Figures given are for guidance. Plan is for illustration purposes only, not to be used for valuations.