

# Switchback Close

Maidenhead • Berkshire • SL6 7QD

Guide Price: £465,000



coopers  
est 1986

# Switchback Close

M Maidenhead • Berkshire • SL6 7QD

A three bedroom semi detached family home, situated in Switchback Close, a sought after road in Furze Platt. Offering easy access to local amenities, excellent schools, and superb transport links. The ground floor features a bright and spacious living room, a separate dining room, and a 12ft kitchen.

Upstairs, the property offers three bedrooms, all served by a family bathroom. Outside, the home benefits from a private two tiered rear garden. To the front, there is a separate garage along with driveway parking.

No chain

Desirable Furze Platt location

Close to local amenities

Spacious living room

Dining room with french doors

Separate kitchen

Three bedrooms

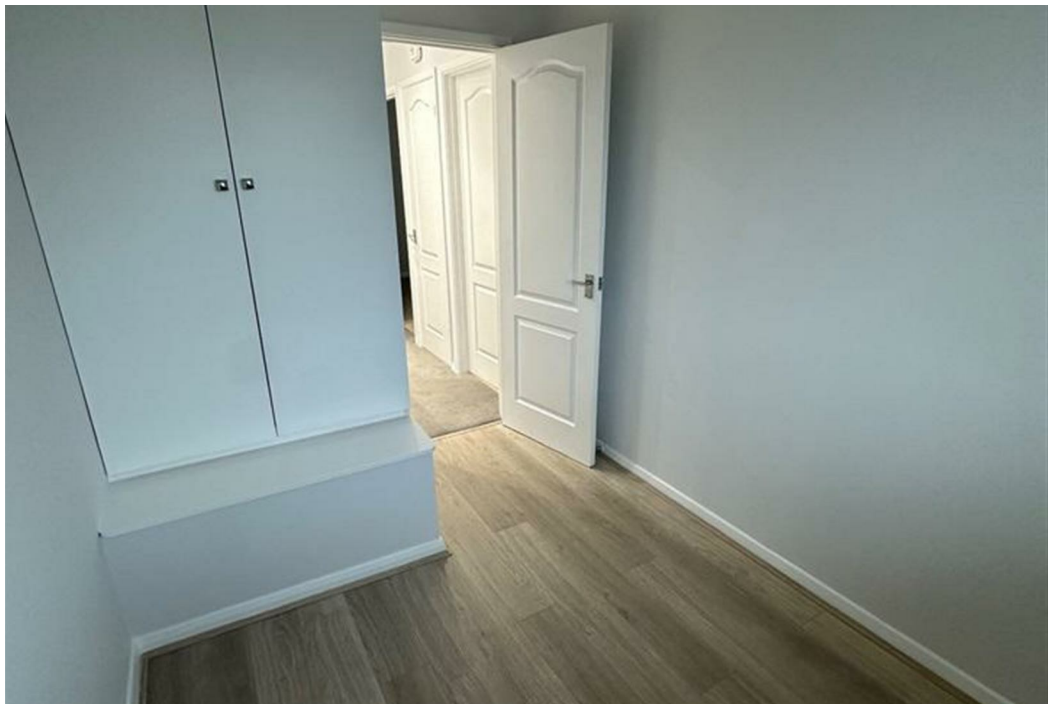
Family bathroom

Driveway

Garage

These particulars are intended as a guide and must not be relied upon as statements of fact. Your attention is drawn to the Important Notice on the last page.





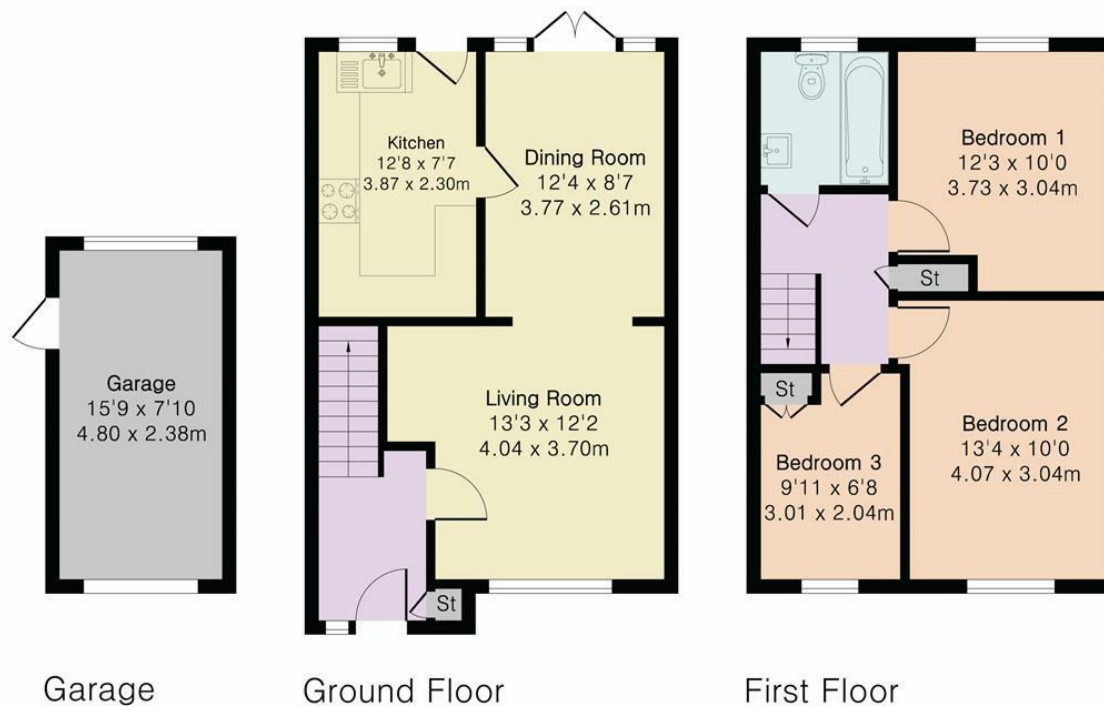
# Switchback Close, Maidenhead, SL6

Main House Area = 849 sq ft / 78.8 sq m

Garage Area = 123 sq ft / 11.4 sq m

Total Area = 972 sq ft / 90.2 sq m

For Identification only - Not to scale

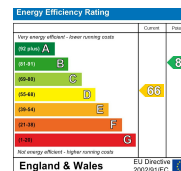


Floor plan produced in accordance with RICS Property Measurement 2nd Edition. Although Pink Plan Ltd ensures the highest level of accuracy, measurements of doors, windows and rooms are approximate and no responsibility is taken for error, omission or misstatement. These plans are for representation purposes only and no guarantee is given on the total square footage of the property within this plan. The figure icon is for initial guidance only and should not be relied on as a basis of valuation.



42 Queen Street, Maidenhead,  
SL6 1HZ  
maidenhead@coopersresidential.co.uk

CoopersResidential.co.uk



Important Notice: These particulars, whilst believed to be accurate are set out as a general outline only for guidance and do not constitute any part of an offer or contract. Intending purchasers should not rely on them as statements or representation of fact, but must satisfy themselves by inspection or otherwise has the authority to make or give any representation or warranty in respect of the property.