



## CRISP ROAD, W6

£4,250 per week ( per month)

Large terrace  
24 hour porter  
Two bedroom  
Two bathroom

@marshandparsons  
marshandparsons.co.uk

MARSH &  
PARSONS

# ABOUT THE PROPERTY

A beautifully presented lateral apartment set within the sought-after Queen's Wharf development, ideally positioned along the picturesque River Thames towpath and moments from Hammersmith Bridge. Situated on the fifth floor, the property offers exceptionally well-balanced accommodation throughout, centred around an impressive 40'7 x 14'7 open-plan kitchen/reception room, creating the perfect space for both relaxing and entertaining. Floor-to-ceiling doors lead onto a private balcony spanning the full width of the apartment, enjoying an abundance of natural light and attractive river-facing surroundings.

The apartment further comprises two generous double

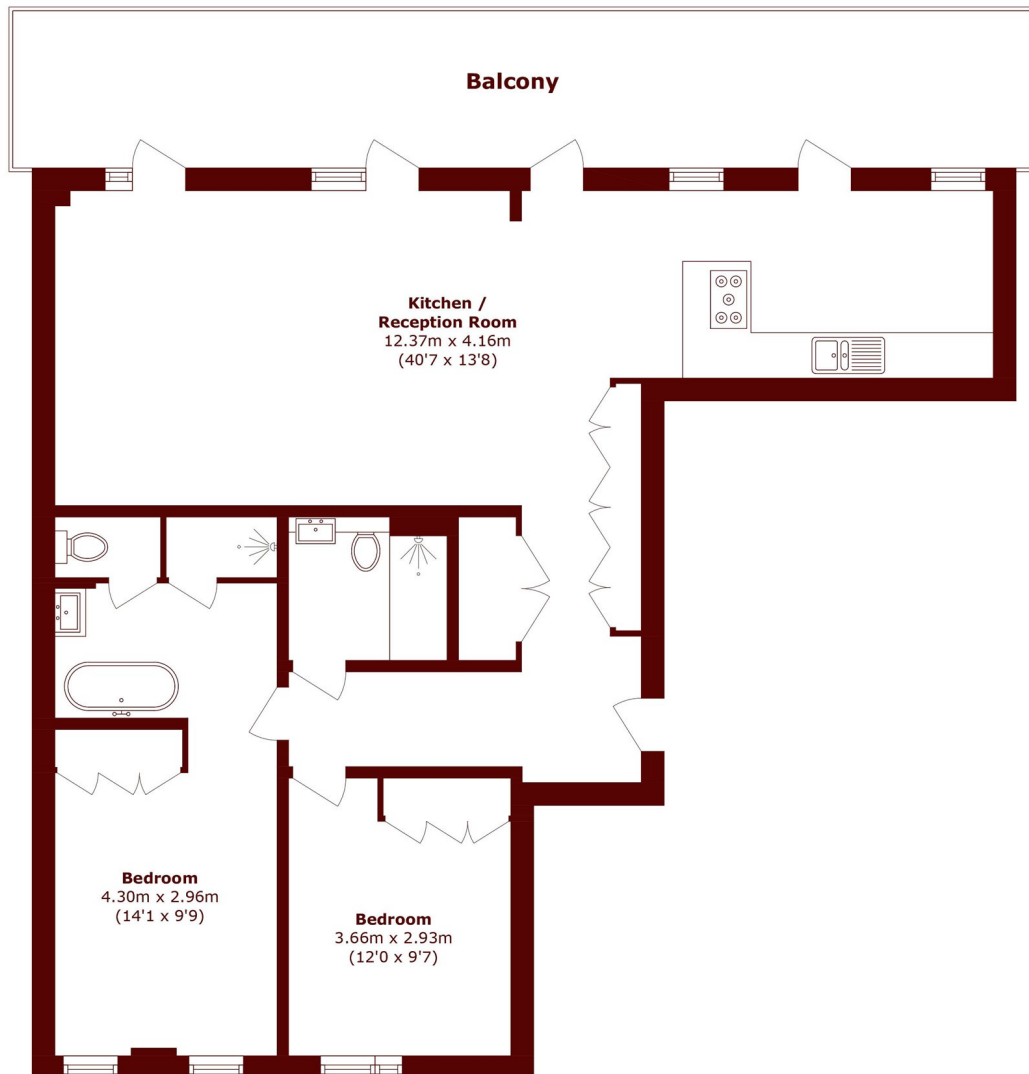








# STEP INSIDE CRISP ROAD



Total area (approx.): 93.3 sq. m (1004.2 sq. ft)

Balcony area (approx.): 29.4 sq. m (316.4 sq. ft)

**Bishops Park**  
020 7368 2480

Energy Rating: B We aim to make our particulars both accurate and reliable. However, they are not guaranteed; nor do they form part of an offer or contract. If you require clarification on any points then please contact us, especially if you're traveling some distance to view. Please note that appliances and heating systems have not been tested and therefore no warranties can be given as to their good working order

**MARSH &  
PARSONS**