



STREATHAM ROAD, CR4

£430,000

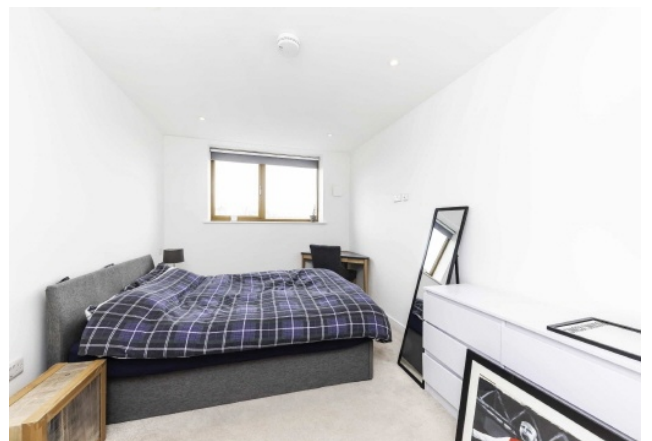
- Penthouse Apartment
- 2 Large Bedrooms
- Open Plan Living
- Large Private Roof Terrace
- Secure Underground Parking
- Sought After Location



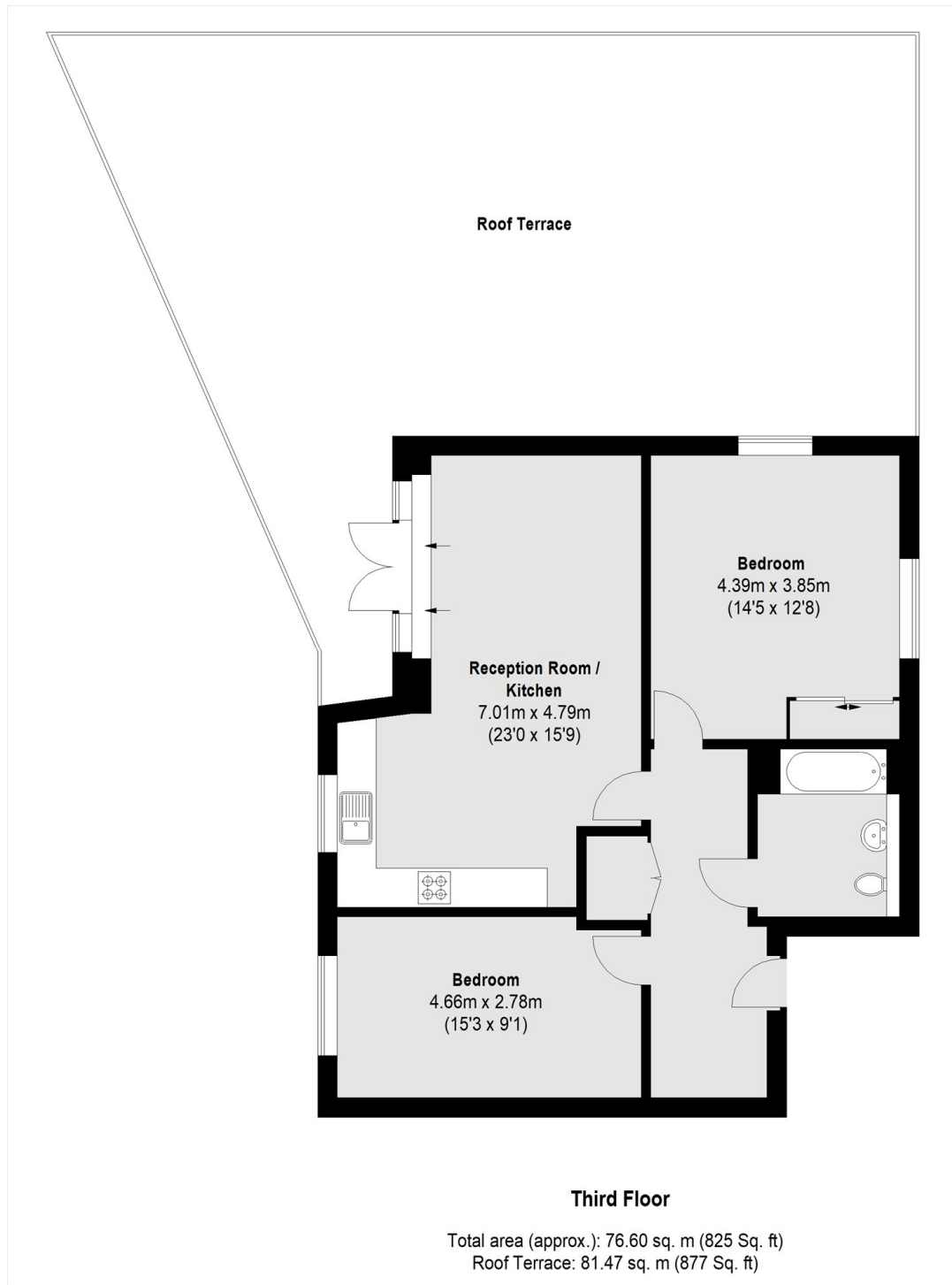


ABOUT THE HOME

A stunning 2 double bedroom penthouse apartment with a private 870sqft+ roof terrace, Providing 360 degree panoramic views across London. Internally the property boasts a generous 825sqft and comprises; A generous open plan kitchen / reception room with fitted, fully integrated kitchen that leads out to the private roof terrace. 2 large bedrooms with the larger room having fitted wardrobes and finally a stylish family bathroom. The property also benefits from an allocated parking space in the secure, underground gated car park. The Imperial Court building is within walking distance of local amenities found along Mitcham Lane and plenty of green spaces including Figges Marsh and Tooting Common. The Imperial Court building is also exceptionally well connected: Tooting overground, Streatham Common and Tooting Broadway stations are within walking distance.





**JACKSONS TOOTING**

3 Upper Tooting Road, London,
SW17 7TS
Sales: 020 8487 3175
Lettings: 020 8487 3176

Energy Rating: We aim to make our particulars both accurate and reliable. However they are not guaranteed; nor do they form part of an offer or contract. If you require clarification on any points then please contact us, especially if you're traveling some distance to view. Please note that appliances and heating systems have not been tested and therefore no warranties can be given as to their good working order.