

148 Westbourne Street

Hove, BN3 5FB

Asking price £595,000

A charming three bedroom period home arranged over three floors, offering approximately 1,207 sq ft of well planned accommodation, a private rear courtyard garden and attractive period features throughout.

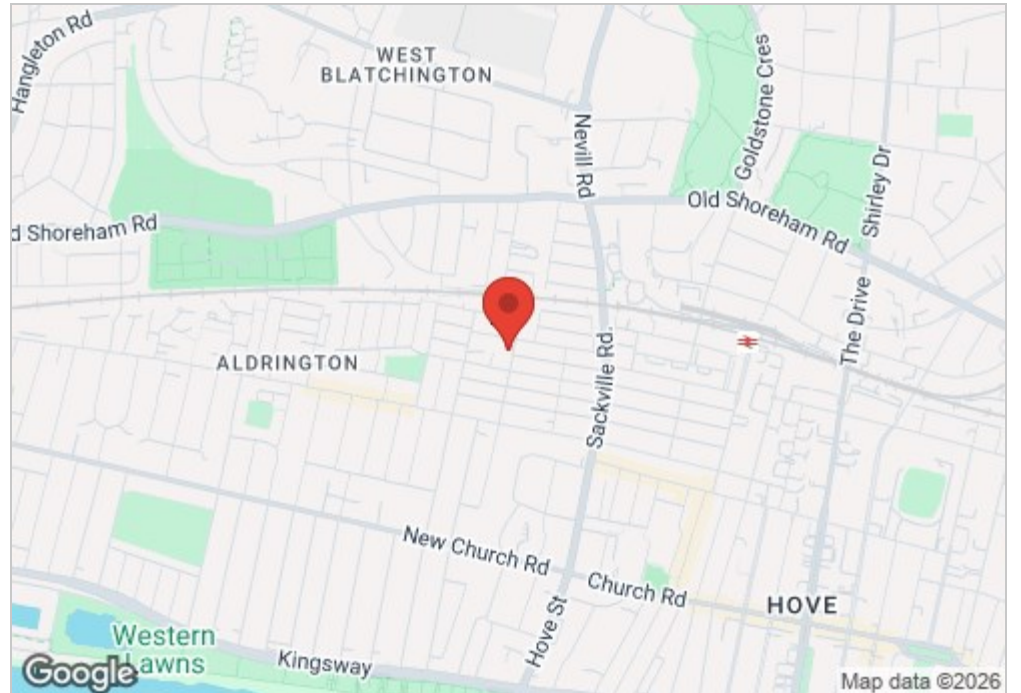
The ground floor is centred around a bright living and dining room, with a large bay window to the front, high ceilings, decorative cornicing and a striking feature fireplace creating a lovely focal point. The space flows through to the kitchen at the rear, giving the ground floor a sociable and practical layout. There is also a ground floor WC and useful storage.

On the first floor there are two bedrooms, including a generous principal room with another bay window, providing excellent natural light and a good sense of space. The second bedroom works well as a guest room, child's room or home office.

The top floor offers a further double bedroom, alongside a bathroom, making this a versatile layout for families, sharers or those looking for flexible work from home space.

Outside, the property benefits from a private, west-facing rear courtyard garden, designed for easy maintenance with paved seating areas and mature planting. It provides a pleasant space for morning coffee, evening drinks or container gardening.

Westbourne Street is well positioned for the amenities of Hove, with Portland Road, local cafés, shops, schools, bus routes and Hove seafront all within easy reach. This is a fantastic opportunity to purchase a well proportioned period home in a popular and convenient Hove location.

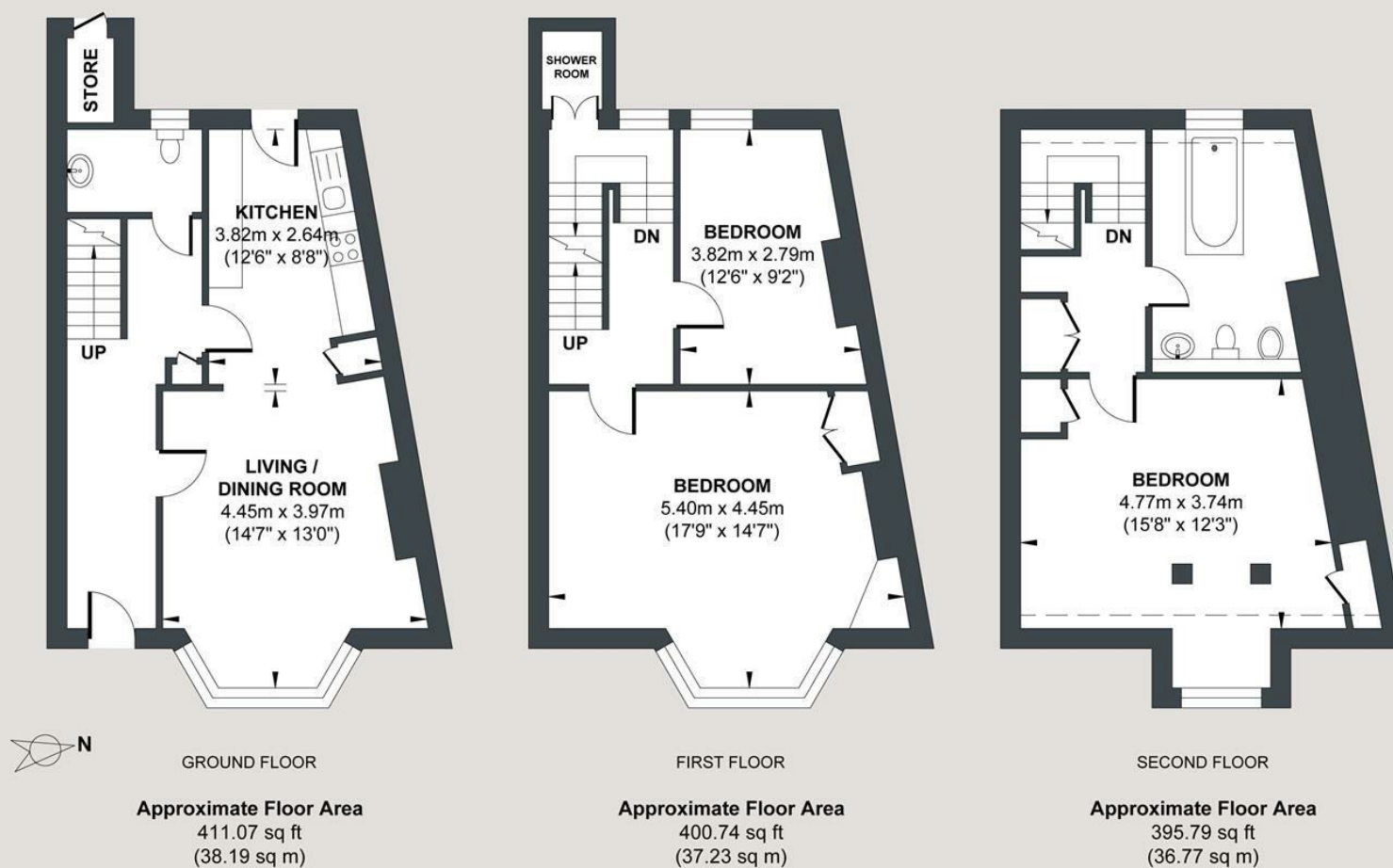


- Three bedroom period home
- Arranged over three floors with approximately 1,207 sq ft of accommodation
- Character features
- Open plan living downstairs
- Ground floor WC and useful storage area
- Private rear courtyard garden
- Conveniently located close to Portland Road
- Near by local shops, cafés, schools, bus routes and Hove seafront.
- Short walk for train connections to Gatwick and London. Aldrington Station 2 min walk
- Hove Station 10 min walk

Energy Efficiency Rating		
	Current	Potential
Very energy efficient - lower running costs		
(92 plus) A		
(81-91) B		
(69-80) C		
(55-68) D		
(39-54) E		
(21-38) F		
(1-20) G		
Not energy efficient - higher running costs		
	69	80
England & Wales	EU Directive 2002/91/EC	

WESTBOURNE STREET

Approx. Gross Internal Floor Area = 112.19 sq m / 1207.60 sq ft
Illustration for identification purposes only, measurements are approximate, not to scale.



Foster & Co and their clients give notice that:

These sales particulars do not constitute any part of an offer of contract and are for guidance for prospective purchases only and should be not relied upon as a statement of fact.

We are not to be held responsible for material information that has not been given to us by our client at the time of marketing.

All measurements are approximate

